

# SeatAvailability 21.3 Implementation guide

# Table of Contents

- Interface Overview ..... 4
  - Short Description ..... 4
  - Current Scope ..... 4
  - Out of Scope ..... 4
  - Sequence Diagram ..... 5
  - Prerequisites ..... 5
  - Implementation ..... 5
    - Distribution Chain ..... 5
    - Payload Attributes ..... 9
    - POS ..... 9
    - Response Parameters ..... 9
    - SeatAvailabilityCoreRequest ..... 11
    - Pax ..... 16
    - Currency Override ..... 16
- Receiving A Reply ..... 19
  - Implementation ..... 19
    - Version ..... 19
    - ALaCarteOffer ..... 19
    - DataLists ..... 25
    - SeatMap ..... 38
    - Warnings ..... 50
    - Errors ..... 52
  - Non-exhaustive list of errors supported ..... 52
- Detailed Use Cases ..... 54
  - Building A Query Examples ..... 54

- Example from Offer - Segment in input ..... 54
- Example from Offer - No segment in input/family case..... 56
- Example from Order - Segment in input ..... 58
- Example from Order - No Segment in input ..... 61
- Example from Order - With Bassinet Seat ..... 62
- Building a Reply - Examples ..... 64
  - Example Seatmap..... 64
- \_ Glossary ..... 87
- \_ Legal disclaimer ..... 88

# Interface Overview

## Short Description

The SeatAvailabilityRQ API is used to request a seatmap on an offer or on an order.

## Current Scope

Following functionalities are currently in scope of SeatAvailability verb:

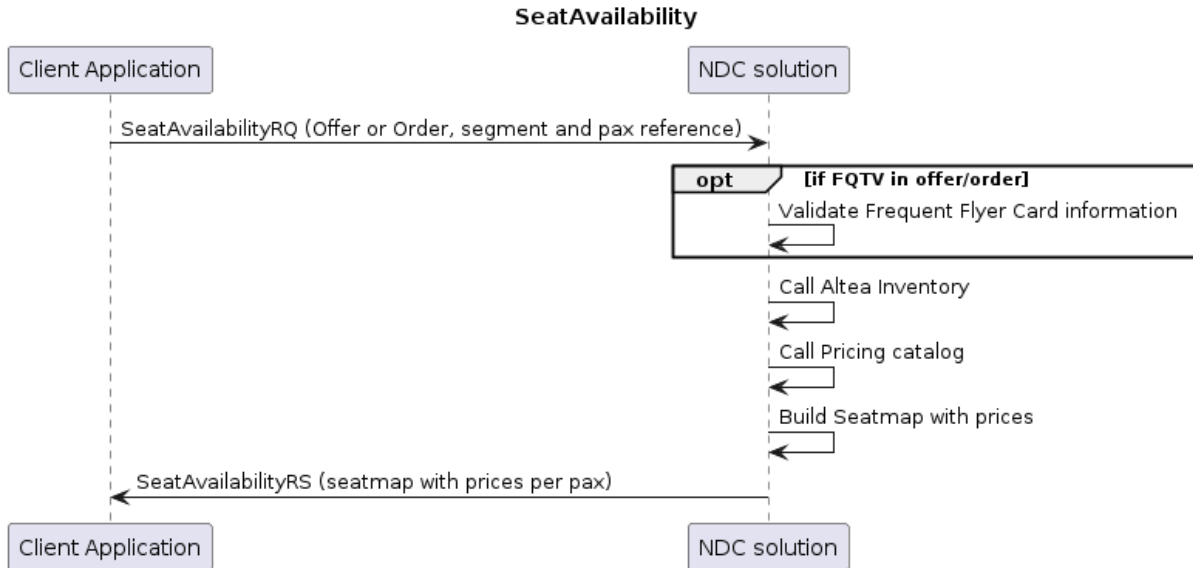
- Seatmap request from an air Offer (prime booking only).
- Seatmap request from an Order.
- The Seatmap can be request for a set of passengers and flights.
- FQTV price biasing (if present in the offer/order).
- Currency override.
- AAS price discount.

## Out of Scope

The following functionalities are not supported via this verb at this time:

- An FQTV can't be added in the SeatAvailabilityRQ. If present in the context of the offer (or of the order), they get applied automatically during the SeatAvailabilityRQ process.
- A CLID can't be added in the SeatAvailabilityRQ. The CLID price adjustment for the SeatAvailabilityRQ is not supported.
- The AAS promo codes are not supported.

## Sequence Diagram



## Prerequisites

In order to use SeatAvailability 21.3 verb, the previous NDC transactions in the flow should have generated either an **Offer** which is still valid or an **Order** which can still be retrieved.

## Implementation

This section describes the implementation of the input message SeatAvailabilityRQ.

### Distribution Chain

The distribution chain data must be provided in any input request of the services described above:

Designation	Repetition	Status	Location	Comments
<b>Distribution Chain Link</b>	<b>1...N</b>	<b>M</b>	<b>.../Distribution Chain/DistributionChainLink</b>	<p><b>Defines an organization playing a participating role in an instance of a distribution channel.</b></p> <p><u>NB: No more than 3 entities can be considered - a single seller / a single distributor / a single carrier.</u></p>

Designation	Repetition	Status	Location	Comments
Ordinal	1	M	/Ordinal	Position of the organization in the distribution chain. This number indicates the order in which the organization participated. Position starts with "1" following ascending order from the seller to the carrier.
Organization Role	1	M	/OrgRole	Role of the organization participating in the distribution chain defined as follow: <ul style="list-style-type: none"> <li>• Seller - end buyer facing.</li> <li>• Distributor - an intermediary.</li> <li>• Carrier - the responsible supplier.</li> </ul>
<b>Contact Info</b>	<b>0...1</b>	<b>O</b>	<b>.../Distribution Chain/DistributionChainLink/ContactInfo</b>	<b>The electronic or geographic address provided by an organization as the contact channel</b>
Contact Info ID	1	M	/ContactInfoID	Organization's contact unique Identifier acting as a reference.
Contact Purpose Text	0...1	O	/ContactPurposeText	Fixed value: "STANDARD".
<b>Email</b>	<b>0...1</b>	<b>O</b>	<b>/EmailAddress</b>	
Email Address	1	M	/EmailAddress/EmailAddressText	The seller's email address used for contact purposes. NB: Only used at OrderCreateRQ.
<b>Phone</b>	<b>0...1</b>	<b>O</b>	<b>/Phone</b>	
Type of contact	0...1	O	/Phone/ContactTypeText	Fixed value: "Mobile". NB: Only used at OrderCreateRQ.
Phone number	0...1	O	/Phone/PhoneNumber	The seller's phone number used for contact purposes. Example: +33677876543
<b>Participating Organization</b>	<b>1</b>	<b>M</b>	<b>.../Distribution Chain/DistributionChainLink/ParticipatingOrg</b>	<b>Organized structure representing the participants.</b>
Organization Name	0...1	O	/Name	Name of the organization.

Designation	Repetition	Status	Location	Comments
Organization ID	1	M	/OrgID	<p>Organization code or identifier.</p> <p>Possible values:</p> <ul style="list-style-type: none"> <li>• for Seller: IATA Number, TIDs (Travel Industry Designator Service), AgencyID.</li> <li>• for Distributor: Unique alphanumeric identifier (3 characters maximum).</li> <li>• for Carrier: Airline Code (2 alphanumeric identifier).</li> </ul> <p>AgencyID shall be used when partner has no IATA Number nor TIDS and it must be an 8-digit numeric code to be reported to the revenue accounting.</p>
<b>Sales Branch</b>	<b>0...1</b>	<b>O</b>	<b>.../Distribution Chain/DistributionChainLink/SalesBranch</b>	
Sales Branch ID	1	M	/SalesBranch/SalesBranchID	The industry-wide unique identifier of the sales branch. Commonly, Pseudo City Code may be used or a bilaterally agreed code.

```

<DistributionChain>
  <DistributionChainLink>
    <ContactInfo>
      <ContactInfoID>123456</ContactInfoID>
      <EmailAddress>
        <EmailAddressText>TEST@AMADEUS.COM</EmailAddressText>
      </EmailAddress>
      <Phone>
        <PhoneNumber>+33493101010</PhoneNumber>
      </Phone>
    </ContactInfo>
    <Ordinal>1</Ordinal>
    <OrgRole>Seller</OrgRole>
    <ParticipatingOrg>
      <OrgID>12345678</OrgID>
    </ParticipatingOrg>
    <SalesBranch>
      <SalesBranchID>NCE6X01AB</SalesBranchID>
    </SalesBranch>
  </DistributionChainLink>
  <DistributionChainLink>
    <Ordinal>2</Ordinal>
    <OrgRole>Distributor</OrgRole>
    <ParticipatingOrg>
      <OrgID>1A</OrgID>
    </ParticipatingOrg>
  </DistributionChainLink>
  <DistributionChainLink>
    <Ordinal>3</Ordinal>
    <OrgRole>Carrier</OrgRole>
    <ParticipatingOrg>
      <OrgID>6X</OrgID>
    </ParticipatingOrg>
  </DistributionChainLink>
</DistributionChain>

```

Table 1 Example of DistributionChain



## Payload Attributes

IATA payload standard attributes.

Designation	Repetition	Status	Location	Comments
Message version	0...1	O	.../PayloadAttributes/VersionNumber	The IATA NDC schema we comply with - the version of the message is indicated by a decimal value.

```
<PayloadAttributes>
  <VersionNumber>21.3</VersionNumber>
</PayloadAttributes>
```

## POS

The Point of Sale is the information identifying the location and other attributes of the entity performing transactions.

Designation	Repetition	Status	Location	Comments
Country Code	1	M*	.../POS/Country/CountryCode	Country code following ISO 3166 with 2 alpha country code. Examples: FR, US.  <i>*Mandatory field for configuration purpose (Agency handling, Reporting, ...).</i>

```
<POS>
  <Country>
    <CountryCode>FR</CountryCode>
  </Country>
</POS>
```

Table 2 Example of POS

## Response Parameters

### Currency Override

This allows the requester to override the default currency defined for the Point of Sale (POS). This currency related parameter intends to influence in which currency the responses are displayed.

If requester would like to override the currency for the full flow, the "CurCode" must be added in input of all impacted verbs.

Designation	Repetition	Status	Location	Comments
<b>Currency Parameters</b>	<b>0...N</b>	<b>O</b>	<b>.../Request/ResponseParameters/CurParameter</b>	
Currency	1	M	/CurCode	Currency code to be applied - 3 letters code as per ISO 4217 (Example: USD, EUR, ...)

```

<ResponseParameters>
  <CurParameter>
    <CurCode>USD</CurCode>
  </CurParameter>
</ResponseParameters>

```

Table 3 Currency Override

Note: the currency used for the override must be defined at POS configuration.

## Language Option

As part of static file capability, the requester has the possibility to request some airline's information such as fare family benefits, disclaimer, ... in the chosen language. Language(s) to be supported must be properly defined in static file otherwise default is English.

If requester would like to have all responses in the chosen language, the "LangCode" must be added in input of all impacted verbs.

NB: Choice of language is not available in input of OrderChangeRQ due to IATA schema limitation, thus response is always in English.

Designation	Repetition	Status	Location	Comments
<b>Language parameters</b>	<b>0...N</b>	<b>O</b>	<b>.../Request/ResponseParameters/LangUsage</b>	
LangCode	1	M	/LangCode	The two letters ISO language code (Example: FR, EN,...). By default, the language is English.

```

<ResponseParameters>
  <LangUsage>
    <LangCode>EN</LangCode>
  </LangUsage>
</ResponseParameters>

```

Table 4 Language option

## SeatAvailabilityCoreRequest

This element is used to indicate the Offer or the Order for which the seatmap is requested. It is not possible to specify both.

### Offer

If the seat map request is done using an offer:

The offer should be generated in previous NDC transactions and the **corresponding Offer item ID** should be entered in the **SeatAvailCoreRequest** (*IATA\_SeatAvailabilityRQ/Request/SeatAvailCoreRequest/OfferRequest/Offer/OfferID*).

Designation	Repetition	Status	Location	Comments
<b>Offer implementation</b>			<b>IATA_SeatAvailabilityRQ/Request/SeatAvailCoreRequest/OfferRequest/Offer</b>	
Offer ID	1	M	/Offer/OfferID	Reference to the air offer for which the seatmap is requested.
Owner Code	1	M	/Offer/OwnerCode	Airline code of the Offer responsible airline.
<b>Offer Item</b>			<b>IATA_SeatAvailabilityRQ/Request/SeatAvailCoreRequest/OfferRequest/Offer/OfferItem</b>	
OfferItemID	1	M	/OfferItem/OfferItemID	Reference to the air offer item for which seatmap is requested.
Owner Code	1	O	/OfferItem/OwnerCode	Airline code of the Offer responsible airline.
Passenger reference	0...N	O	/OfferItem/PaxRefID	Passengers for which the seatmap is requested. If empty, all passengers are taken into account to build the seatmap.
Flight reference	0...N	O	/OfferItem/PaxSegmentRefID	Segments for which the seatmap is requested. If not specified, seatmap will be returned for all segments.

```

<SeatAvailCoreRequest>
  <OfferRequest>
    <Offer>
      <OfferID>6vxjawbYVbsJHJggcsjgfjjf</OfferID>
      <OfferItem>
        <OfferItemID>7fhadheGjjYCGSAH</OfferItemID>
        <OwnerCode>6X</OwnerCode>
        <PaxSegmentRefID>SEG2</PaxSegmentRefID>
      </OfferItem>
      <OwnerCode>6X</OwnerCode>
    </Offer>
  </OfferRequest>
</SeatAvailCoreRequest>

```

Table 5 No passenger but one segment specified

```

<SeatAvailCoreRequest>
  <OfferRequest>
    <Offer>
      <OfferID>6vxjawbYVbsJHJggcsjgfjjf</OfferID>
      <OfferItem>
        <OfferItemID>7fhadheGjjYCGSAH</OfferItemID>
        <OwnerCode>6X</OwnerCode>
        <PaxRefID>PAX1</PaxRefID>
        <PaxRefID>PAX2</PaxRefID>
        <PaxRefID>PAX4</PaxRefID>
        <PaxSegmentRefID>SEG2</PaxSegmentRefID>
      </OfferItem>
      <OwnerCode>6X</OwnerCode>
    </Offer>
  </OfferRequest>
</SeatAvailCoreRequest>

```

Table 6 Multiple passengers and one segment specified

```

<SeatAvailCoreRequest>
  <OfferRequest>
    <Offer>
      <OfferID>6vxjawbYVbsJHJggcsjgfjjf</OfferID>
      <OfferItem>
        <OfferItemID>7fhadheGjjYCGSAH</OfferItemID>
        <OwnerCode>6X</OwnerCode>
        <PaxRefID>PAX1</PaxRefID>
        <PaxSegmentRefID>SEG2</PaxSegmentRefID>
        <PaxSegmentRefID>SEG4</PaxSegmentRefID>
      </OfferItem>
      <OwnerCode>6X</OwnerCode>
    </Offer>
  </OfferRequest>
</SeatAvailCoreRequest>

```

Table 7 Multiple segments and one passenger specified

```

<SeatAvailCoreRequest>
  <OfferRequest>
    <Offer>
      <OfferID>6vxjawbYVbsJHJggcsjgfjjf</OfferID>
      <OfferItem>
        <OfferItemID>7fhadheGjjYCGSAH</OfferItemID>
        <OwnerCode>6X</OwnerCode>
        <PaxRefID>PAX1</PaxRefID>
      </OfferItem>
      <OwnerCode>6X</OwnerCode>
    </Offer>
  </OfferRequest>
</SeatAvailCoreRequest>

```

Table 8 All segments will be returned

## Order

If the seat map request is done using an order:

The order should be generated in previous NDC transactions and the **corresponding Order ID** should be passed in the **SeatAvailCoreRequest** (*IATA\_SeatAvailabilityRQ/Request/SeatAvailCoreRequest/OrderRequest/Order/OrderID*).

Designation	Repetition	Status	Location	Comments
<b>Order implementation</b>			<b>IATA_SeatAvailabilityRQ/Request/SeatAvailCoreRequest/OrderRequest/Order</b>	
OrderID	1	M	/Order/OrderID	Reference to the order for which the seatmap is requested.
Owner Code	1	M	/Order/OwnerCode	Airline code of the Order responsible airline.
<b>Order Item</b>			<b>IATA_SeatAvailabilityRQ/Request/SeatAvailCoreRequest/OrderRequest/Order/OrderItem</b>	
OrderItemID	1	M*	/OrderItem/OrderItemID	Reference to the order item for which the seatmap is requested.
Passenger reference	1...N	O	/OrderItem/PaxRefID	Passengers for which the seatmap is requested. If empty, all passengers are taken into account to build the seatmap.
Flight reference	1...N	O	/OrderItem/PaxSegmentRefID	Segment for which the seatmap is requested. If not specified, the seatmap will be returned for all segments.
Owner Code	1	M	/OrderItem/OwnerCode	Airline code of the Order responsible airline.

\*Mandatory if there is an Order Item

```

<SeatAvailCoreRequest>
  <OrderRequest>
    <Order>
      <OrderID>6X123A1B2C300</OrderID>
      <OrderItem>
        <OrderItemID>6X123A1B2C300_AIR-1-2</OrderItemID>
        <OwnerCode>6X</OwnerCode>
        <PaxSegmentRefID>SEG2</PaxSegmentRefID>
      </OrderItem>
      <OwnerCode>6X</OwnerCode>
    </Order>
  </OrderRequest>
</SeatAvailCoreRequest>

```

Table 9 No passenger but one segment specified

```

<SeatAvailCoreRequest>
  <OrderRequest>
    <Order>
      <OrderID>6X123A1B2C300</OrderID>
      <OrderItem>
        <OrderItemID>6X123A1B2C300_AIR-1-2</OrderItemID>
        <OwnerCode>6X</OwnerCode>
        <PaxRefID>PAX1</PaxRefID>
        <PaxRefID>PAX2</PaxRefID>
        <PaxRefID>PAX4</PaxRefID>
        <PaxSegmentRefID>SEG2</PaxSegmentRefID>
      </OrderItem>
      <OwnerCode>6X</OwnerCode>
    </Order>
  </OrderRequest>
</SeatAvailCoreRequest>

```

Table 10 Multiple passengers and one segment specified

```

<SeatAvailCoreRequest>
  <OrderRequest>
    <Order>
      <OrderID>6X123A1B2C300</OrderID>
      <OrderItem>
        <OrderItemID>6X123A1B2C300_AIR-1-2</OrderItemID>
        <OwnerCode>6X</OwnerCode>
        <PaxRefID>PAX1</PaxRefID>
        <PaxSegmentRefID>SEG2</PaxSegmentRefID>
        <PaxSegmentRefID>SEG4</PaxSegmentRefID>
      </OrderItem>
      <OwnerCode>6X</OwnerCode>
    </Order>
  </OrderRequest>
</SeatAvailCoreRequest>

```

Table 11 Multiple segments and one passenger specified

```

<SeatAvailCoreRequest>
  <OrderRequest>
    <Order>
      <OrderID>6X123A1B2C300</OrderID>
      <OrderItem>
        <OrderItemID>6X123A1B2C300_AIR-1-2</OrderItemID>
        <OwnerCode>6X</OwnerCode>
        <PaxRefID>PAX1</PaxRefID>
      </OrderItem>
      <OwnerCode>6X</OwnerCode>
    </Order>
  </OrderRequest>
</SeatAvailCoreRequest>

```

Table 12 All segments will be returned.

## Pax

Designation	Repetition	Status	Location	Comments
<b>Pax implementation</b>			<b>IATA_SeatAvailabilityRQ/Request/Pax</b>	
Passenger ID	1	M	/Pax/PaxID	Unique identifier of a Passenger.
Passenger Type	1	O	/Pax/PTC	Passenger Type Code. Possible values are: ADT, CHD. When not present, <b>ADT</b> is considered by default.
<b>Requested Services</b>			<b>/Pax/Remark</b>	
Service reference	0...N	O	/Remark/RemarkText	Reference to the service to be taken into account. Accepted values: " <b>Bassinet</b> ".

```

<Pax>
  <PaxID>PAX1</PaxID>
  <PTC>ADT</PTC>
  <Remark>
    <RemarkText>Bassinet</RemarkText>
  </Remark>
</Pax>

```

Table 13 All segments will be returned



## Currency Override

### Currency Override

This allows the requester to override the default currency defined for the Point of Sale (POS). This currency related parameter intends to influence in which currency the responses are displayed.

If requester would like to override the currency for the full flow, the "CurCode" must be added in input of all impacted verbs.

Designation	Repetition	Status	Location	Comments
<b>Currency Parameters</b>	<b>0...N</b>	<b>O</b>	<b>.../Request/ResponseParameters/CurParameter</b>	
Currency	1	M	/CurCode	Currency code to be applied - 3 letters code as per ISO 4217 (Example: USD, EUR, ...)

```

<ResponseParameters>
  <CurParameter>
    <CurCode>USD</CurCode>
  </CurParameter>
</ResponseParameters>

```

Table 14 Currency Override

Note: the currency used for the override must be defined at POS configuration.

### Language Option

As part of static file capability, the requester has the possibility to request some airline's information such as fare family benefits, disclaimer, ... in the chosen language. Language(s) to be supported must be properly defined in static file otherwise default is English.

If requester would like to have all responses in the chosen language, the "LangCode" must be added in input of all impacted verbs.

NB: Choice of language is not available in input of OrderChangeRQ due to IATA schema limitation, thus response is always in English.

Designation	Repetition	Status	Location	Comments
<b>Language parameters</b>	<b>0...N</b>	<b>O</b>	<b>.../Request/ResponseParameters/LangUsage</b>	
LangCode	1	M	/LangCode	The two letters ISO language code (Example: FR, EN,...). By default, the language is English.

```

<ResponseParameters>
  <LangUsage>
    <LangCode>EN</LangCode>
  </LangUsage>
</ResponseParameters>

```

Table 15 Language option

# Receiving A Reply

## Implementation

This section describes the implementation of the output message IATA\_SeatAvailabilityRS.

### Version

This section describes the IATA payload standard attributes providing some ID that identified a transaction as well as the IATA NDC version used.

Designation	Repetition	Status	Location	Comments
Correlation ID	0...1	O	.../PayloadAttributes/CorrelationID	A unique alphanumeric ID to identify the transaction.  Mandatory for end-to-end correlation of log messages with the corresponding Web service message transaction.
Message version	0...1	O	.../PayloadAttributes/VersionNumber	Specify the NDC Schema Version to which the message conforms.  For all IATA versioned messages, the version of the message is indicated by a decimal value.

```
<PayloadAttributes>
  <CorrelationID>0123456789#ABCD</CorrelationID>
  <VersionNumber>21.3</VersionNumber>
</PayloadAttributes>
```

Table 16 Payload Attributes

### AlaCarteOffer

This mandatory structure contains the different prices available on the seatmap.

Each price can be found under the OfferItem structure, described below.

### OfferItem

This element is used to convey the price element per passenger.

#### Price elements per passengers:

The information provided in a price element is:

- Price information:
  - Total price, Amount without taxes, Taxes with currency code.
  - The exemption source when the Total price is set to "0".
- The association with a passenger.

Designation	Repetition	Status	Location	Comments
<b>ALaCarteOffer implementation</b>			<b>IATA_SeatAvailabilityRS/Response/ALaCarteOffer</b>	
OfferID	1	M	/ALaCarteOffer/OfferID	Always "PRICE" or "PACK".
Owner Code	1	O	/ALaCarteOffer/OwnerCode	Airline code of the Offer responsible airline.
<b>Price OfferItem implementation</b>			<b>IATA_SeatAvailabilityRS/Response/ALaCarteOffer/OfferItem</b>	
Offer Item ID	1	M	/OfferItem/OfferItemID	Unique encoded ID of the offer item.
<b>Price details</b>			<b>IATA_SeatAvailabilityRS/Response/ALaCarteOffer/OfferItem/UnitPrice</b>	
Best Discount RuleID	1	O	/UnitPrice/Discount/DescText	Reference to the best Discount RuleID.
Reference of Discount	1	O	/UnitPrice/Discount/DiscountContext/KeyText	Discount RuleID
Reason for Discount	1	O	/UnitPrice/Discount/DiscountContext/ValueText	Reason for Discount. "UNKNOWN" if no Reason for Discount is provided
Total amount	1	M	/UnitPrice/TotalAmount	Total amount for the seat reservation.
Total amount currency	1	M	/UnitPrice/TotalAmount/@CurCode	Attribute Code (3 letters) is used to convey the currency code. Example: Code="USD".
Old Price	1	O	/UnitPrice/Discount/PreDiscountedAmount	Field used to provide the Old Price
Base amount	1	M	/UnitPrice/BaseAmount	Base amount for the seat reservation.
Base amount currency	1	M	/UnitPrice/BaseAmount/@CurCode	Attribute Code (3 letters) is used to convey the currency code. Example: Code="USD".
Taxes total amount	1	M	/UnitPrice/TaxSummary/TotalTaxAmount	Taxes total amount for the seat reservation.

Designation	Repetition	Status	Location	Comments
Taxes total amount currency	1	M	/UnitPrice/TaxSummary/TotalTaxAmount /@CurCode	Attribute Code (3 letters) is used to convey the currency code. Example: Code="USD".
<b>Service section</b>			<b>IATA_SeatAvailabilityRS/Response/ALaCarteOffer/OfferItem/Service</b>	
Service ID	1	M	/Service/ServiceID	Service ID.
Service reference	1	M	/Service/ServiceDefinitionRefID	Reference of the service.
<b>Eligibility details</b>			<b>IATA_SeatAvailabilityRS/Response/ALaCarteOffer/OfferItem/Eligibility</b>	
Eligible Traveler	1...N	M	/Eligibility/PaxRefID	Passenger reference as defined in Pax. Example: PAX1.
Association Segment	1...N	M	/Eligibility/OfferFlightAssociations/PaxSegmentReferences/PaxSegmentRefID	Segment reference as defined in PaxSegmentList
<b>Cancel Parameters</b>			<b>/IATA_SeatAvailabilityRS/Response/ALaCarteOffer/OfferItem/ChangeRestrictions</b>	
Service Indicator Reference	1	M	/ChangeRestrictions/DescText	This attribute is used to reference the Indicator in the Service element (association Other) - only on Service element defined as price element.  Attribute format is the following: <ul style="list-style-type: none"> <li>Refundable / Exchangeable indicator: prefix "REFUND_"</li> </ul>
Exchangeable value	1	M	/ChangeRestrictions/AllowedModificationInd	true if the service is exchangeable
Indicator Description	1	M	/ChangeRestrictions/Refund/DescText	Description of the indicator.
Refundable Value	1	M	/ChangeRestrictions/Refund/LevelTypeCode	Possible values are <b>Full</b> or <b>None</b>
<b>Pack OfferItem implementation</b>			<b>IATA_SeatAvailabilityRS/Response/ALaCarteOffer/OfferItem</b>	
Offer Item ID	1	M	/OfferItem/OfferItemID	Unique ID of the offer item. Following Prefix is used: "PACK". An incremental number is then append after the prefix. Then segment reference is added with following

Designation	Repetition	Status	Location	Comments
				structure: "-SEgN". Overall structure would be "PACKm-SEgN".
Price details	1	M	/OfferItem/UnitPrice	Price information for a Price element.
Total amount	1	M	/OfferItem/UnitPrice/TotalAmount	Total amount for the seat reservation. <b>It will always be 0 for packs, as the price is included in the pack.</b>
Service	1	M	/OfferItem/Service	Service associated to the offer.
Service ID	1	M	/OfferItem/Service/ServiceID	Service ID.
Service reference	1	M	/OfferItem/Service/ServiceDefinitionRefID	Reference of the service.
Eligibility details	1	M	/OfferItem/Eligibility	Notes: <ul style="list-style-type: none"> <li>• A passenger association is mandatory.</li> <li>• A segment association is mandatory</li> </ul>
Eligible Traveler	1...N	M	/OfferItem/Eligibility/PaxRefID	Passenger reference as defined in Pax. Example: PAX1.
Association Segment	1...N	M	/OfferItem/Eligibility/OfferFlightAssociations/PaxSegmentReferences/PaxSegmentRefID	Segment reference as defined in PaxSegmentList

Possible values of the Cancel Parameters are:

Reference	Exchangeable value	Refundable Value	Indicator Description
REFUND_1	true	Full	Service is refundable.
REFUND_2	true	None	Service not refundable but exchangeable.
REFUND_3	false	None	Service not refundable and not exchangeable.

These indicators are coming from the pricing catalog.

### Price element:

Example of price element with following specificities:

- Seats 9B and 9C are defined as chargeable (CH) and Leg Space seats (L).
- PAX1 is exempted on 9B and 9C by the seating exemption rule defined in Altea Inventory.
- PAX2 is not exempted on 9B and 9C.
- the pricing information returned by the catalogue for seats defined with chargeable seat characteristics (CH) and leg space (L) are:
  - total amount 15.00 USD.
  - pricing description is "Extra EXTRA-LEG-ROOM".

```

<ALaCarteOffer>
  <OfferID>PRICE</OfferID>
  <OfferItem>
    <ChangeRestrictions>
      <AllowedModificationInd>true</AllowedModificationInd>
      <DescText>REFUND_1-SEG15</DescText>
      <Refund>
        <DescText>Service is refundable</DescText>
        <LevelTypeCode>Full</LevelTypeCode>
      </Refund>
    </ChangeRestrictions>
    <ChangeRestrictions>
      <AllowedModificationInd>true</AllowedModificationInd>
      <DescText>REFUND_2-SEG15</DescText>
      <Refund>
        <DescText>Service not refundable but exchangeable</DescText>
        <LevelTypeCode>None</LevelTypeCode>
      </Refund>
    </ChangeRestrictions>
    <ChangeRestrictions>
      <AllowedModificationInd>>false</AllowedModificationInd>
      <DescText>REFUND_3-SEG15</DescText>
      <Refund>
        <DescText>Service not refundable and not exchangeable</DescText>
        <LevelTypeCode>None</LevelTypeCode>
      </Refund>
    </ChangeRestrictions>
    <Eligibility>
      <OfferFlightAssociations>
        <PaxSegmentReferences>
          <PaxSegmentRefID>SEG15</PaxSegmentRefID>
        </PaxSegmentReferences>
      </OfferFlightAssociations>
      <PaxRefID>PAX1</PaxRefID>
    </Eligibility>
  </OfferItemID>NlgtU0VHMTUtUEFYMi1VU0QtMCOwLTAtU1FTVC1BLTBCNS1GUKVFIFNFQVQtR1JPVVBTSO
</OfferItemID>
  <Service>
    <ServiceDefinitionRefID>SD1-SEG15</ServiceDefinitionRefID>
    <ServiceID>SRV1</ServiceID>
  </Service>
  <UnitPrice>
    <BaseAmount CurCode="SGD">0.00</BaseAmount>
    <Discount>
      <DescText>87654321</DescText>
      <DiscountContext>
        <KeywordText>87654321</KeywordText>
        <ValueText>REASON_FOR_DISCOUNT</ValueText>
      </DiscountContext>
    </Discount>
    <TaxSummary>
      <TotalTaxAmount CurCode="SGD">0.00</TotalTaxAmount>
    </TaxSummary>
  </UnitPrice>

```



```

        </TaxSummary>
        <TotalAmount CurCode="SGD">0.00</TotalAmount>
    </UnitPrice>
</OfferItem>
<OfferItem>
    <Eligibility>
        <PaxRefID>PAX1</PaxRefID>
        <OfferFlightAssociations>
            <PaxSegmentReferences>
                <PaxSegmentRefID>SEG15</PaxSegmentRefID>
            </PaxSegmentReferences>
        </OfferFlightAssociations>
    </Eligibility>

<OfferItemID>NlgtU0VHMTUtUEFYMi1VU0QtMTgtMTgtMCM1SUVNULUEtMEI1LVNFQVQtR1JPVVBtQS0</Of
ferItemID>
    <Service>
        <ServiceDefinitionRefID>SRV15-SEG15</ServiceDefinitionRefID>
        <ServiceID>15-SEG15</ServiceID>
    </Service>
    <UnitPrice>
        <BaseAmount CurCode="SGD">18.00</BaseAmount>
        <TaxSummary>
            <TotalTaxAmount CurCode="SGD">0.00</TotalTaxAmount>
        </TaxSummary>
        <TotalAmount CurCode="SGD">18.00</TotalAmount>
    </UnitPrice>
</OfferItem>
    <OwnerCode>6X</OwnerCode>
</ALaCarteOffer>

```

Table 17 AlaCarteOffer section

## DataLists

### Pax List

The section describes all information/data related to a passenger

Designation	Repetition	Status	Location	Comments
PaxList	1...N	M	.../Response/Data Lists/PaxList/Pax	Any person ( <i>passenger</i> ) on board of an aircraft performing a journey
ContactInfoRefID	0...1	O	/ContactInfoRefID	Reference to a set of contact information defined in <i>ContactInfoList</i> node, always starts with <b>CTCPAX</b> followed by a number Example: CTCPAX1

Designation	Repetition	Status	Location	Comments
Passenger ID	1	M	/PaxID	Identifies a passenger.
Passenger Reference	0...1	O	/PaxRefID	Reference to a PaxID - Usually used to reference the passenger to whom an infant travelling without seat is associated to.
Passenger Type	0...1	O	/PTC	Type code applying to the Passenger which typically drives pricing (e.g. ADT, CHD, etc...).  <i>There is no <b>Date of Birth</b> check when a <b>PTC</b> refers to a specific age (e.g. <b>B15</b>) except on <b>PNR</b> side for <b>CHD, INF, and INS</b>.</i>  <i>Please refer to list of supported PTC below.</i>
<b>PaxList</b>	<b>1</b>	<b>M</b>	<b>.../Response/DataLists/PaxList/Pax/Individual</b>	
Passenger Birth Date		O	/Birthdate	The date on which an individual was born.
Passenger First Name	0...1	O	/GivenName	A personal name given to the individual at birth and used before a family name. Also called first name. Example: JOHN.
Passenger Surname	1	M	/Surname	Family name or last name. Example: SMITH. Excludes any potential suffix.
Passenger Name Title	0...1	O	/TitleName	Title such as Mr., Mrs., Miss or Dr. that indicates the gender, profession or marital status of an individual

```

<PaxList>
  <Pax>
    <Individual>
      <Birthdate>2023-12-08</Birthdate>
      <GivenName>TONY</GivenName>
      <IndividualID>PAX11</IndividualID>
      <Surname>SMITH</Surname>
    </Individual>
    <PaxID>PAX11</PaxID>
    <PaxRefID>PAX1</PaxRefID>
    <PTC>INF</PTC>
  </Pax>
  <Pax>
    <ContactInfoRefID>CTCPAX1</ContactInfoRefID>
    <Individual>
      <GivenName>JOHN</GivenName>
      <IndividualID>PAX1</IndividualID>
      <Surname>SMITH</Surname>
      <TitleName>MR</TitleName>
    </Individual>
    <PaxID>PAX1</PaxID>
    <PTC>ADT</PTC>
  </Pax>
</PaxList>

```

Table 18 Pax List

Below is the complete list of the supported Passenger Types in NDC:

Passenger Type Code (PTC)	Description
ADT	Adult
B<NN>	Adult with age restriction - <NN> specify age (e.g B15)
CHD	Child
CMA	Adult with companion
CMP	Companion
DIS	Disabled Passenger
EMI	Emigrant
FFY	Regular passenger
HOF	Head Of Family
IIT	Single with tour included
INF	Infant without seat (travelling on ADT lap)
I<NN>	Inclusive Tour Child

Passenger Type Code (PTC)	Description
INS	Infant
ITF	Inclusive Tour Infant without a seat
ITS	Inclusive Tour Infant with a seat
ITX	Individual Inclusive Tour
JCB	Contract Bulk Adult
JNF	Contract Bulk Infant without a sea
J<NN>	Contract Bulk Child - <NN> specify age (e.g J05)
JNS	Contract Bulk infant with a seat
LBR	Laborer/Worker
LIF	Laborer/Worker Infant
L<NN>	Laborer/Worker Child -<NN> specify age
MED	Patients traveling with medical treatment
MIC	Missionary Child
MIF	Missionary Infant without seat
MIL	Military
MIS	Missionary
OFW	Overseas Filipino Workers
PFS	Cruise
SEA	Seamen
SPS	Spouse
S<NN>	Senior Citizen <NN> specify age
SRC	Senior Citizen
STR	State resident
STU	Student
TUR	Tour guide
U<NN>	Unaccompanied Child <NN> specify age
VFR	Visit Friends/Relatives
YSB	Young Standby
YTH	Youth

Passenger Type Code (PTC)	Description
<i>Not supported by NDC flow</i>	<b>CNN, ITU, LNS, PFA, and TEA</b>

## Pax Segment List

This section describes each segment with its associated flight data.

Designation	Repetition	Status	Location	Comments
<b>PaxSegment</b>	<b>1...N</b>	<b>M</b>	<b>.../Response/DataLists/PaxSegmentList/PaxSegment</b>	
Cabin code	0...1	O	/CabinTypeAssociationChoice/SegmentCabinType/CabinTypeCode	Cabin class code for which the seatmap is requested in case of SeatAvailabilityRS.
Cabin name	0...1	O	/CabinTypeAssociationChoice/SegmentCabinType/CabinTypeName	Cabin class name for which the seatmap is requested in case of SeatAvailabilityRS.
DatedMarketingSegmentRefId	1	M	/DatedMarketingSegmentRefId	A reference to a unique identifier of a dated marketing segment used in a message.
Marketing Booking class code	0...1	O	/MarketingCarrierRBD_Code	Booking class code. It is equivalent to the fare RBD.
Pax Segment ID	1	M	/PaxSegmentID	Reference of the segment.

```

<PaxSegmentList>
  <PaxSegment>
    <CabinTypeAssociationChoice>
      <SegmentCabinType>
        <CabinTypeCode>2</CabinTypeCode>
        <CabinTypeName>Y</CabinTypeName>
      </SegmentCabinType>
    </CabinTypeAssociationChoice>
    <DatedMarketingSegmentRefId>DMS1</DatedMarketingSegmentRefId>
    <MarketingCarrierRBD_Code>D</MarketingCarrierRBD_Code>
    <PaxSegmentID>SEG6</PaxSegmentID>
  </PaxSegment>
</PaxSegmentList>

```

Table 19 Pax segment list

## Dated Operating Segment List

This section describes the information related to the Dated Operating Segment(s) used between board point and any subsequent off point within the same flight designator - could be one or more legs.

Designation	Repetition	Status	Location	Comments
<b>Operating segment information</b>	<b>1...N</b>	<b>M</b>	<b>.../Response/DataLists/DatedOperatingSegmentList/DatedOperatingSegment</b>	
Operating Carrier Code	1	M	/CarrierDesigCode	Airline Code (2 alphanumeric identifier).
Carrier Name	0...1	O	/CarrierName	Name of the Operating carrier.
Operating Segment Leg ID	0...N	O	/DatedOperatingLegRefID	Reference of the leg defined in the <i>DatedOperatingLegList</i> node, always starts with <b>LEG</b> followed by a number. Example: LEG1.
Operating Segment ID	1	M	/DatedOperatingSegmentId	Identifies the segment operated by the Operating carrier. Always starts with <b>DOS (DatedOperatingSegment)</b> , followed by a number. Example: DOS15.
Disclosure ID	0...1	O	/DisclosureRefID	Reference of the disclosure defined in the <i>DisclosureList</i> node. Example: DIS1.
Duration	0...1	O	/Duration	Total segment time including the combined air time and connection times of any legs.  Example: PT8H15M  NB: Duration is not returned in this node in <i>OrderViewRS</i> as information is already returned in <i>PaxJourney</i> node
Operating Carrier Flight number	0...1	O	/OperatingCarrierFlightNumberText	Flight number of the Operating carrier (can be different from the Marketing carrier flight number).
Secure Flight Indicator	0...1	O	/SecureFlightInd	Flag to indicate if the flight is a "secure flight". It is returned only when the value is true (Example: in case of flight to an US airport).

```

<DatedOperatingSegmentList>
  <DatedOperatingSegment>
    <CarrierDesigCode>6X</CarrierDesigCode>
    <CarrierName>Amadeus Six</CarrierName>
    <DatedOperatingLegRefID>LEG16</DatedOperatingLegRefID>
    <DatedOperatingSegmentId>DOS15</DatedOperatingSegmentId>
    <DisclosureRefID>DIS1</DisclosureRefID>
    <Duration>PT8H5M</Duration>
    <OperatingCarrierFlightNumberText>221</OperatingCarrierFlightNumberText>
    <SecureFlightInd>>true</SecureFlightInd>
  </DatedOperatingSegment>
</DatedOperatingSegmentList>

```

## Dated Operating Leg List

This section describes the information related to a nonstop operating flight between a departure and an arrival location.

Designation	Repetition	Status	Location	Comments
<b>DatedOperatingLeg</b>	<b>1...N</b>	<b>M</b>	<b>.../Response/DataLists/DatedOperatingLegList/DateDatedOperatingLeg</b>	
Operating Leg ID	1	M	/DatedOperatingLegID	Reference of the leg - Unique identifier that will be used as reference in the <i>DatedOperatingSegmentList</i> node. Always starts with <b>LEG</b> followed by a number. Example: LEG1.
Equipment Code	0...1	O	/IATA_AircraftType/IATA_AircraftTypeCode	Aircraft type code. Example: 388 (Airbus A380-800).
<b>Arrival structure</b>	<b>1</b>	<b>M</b>	<b>.../Response/DataLists/DatedOperatingLegList/DateDatedOperatingLeg/Arrival</b>	
Aircraft scheduled arrival	0...1	O	/AircraftScheduledDateTime	Arrival date & time, in local time (YYYY-MM-DDTHH:MM:SS). Example: 2024-03-08T10:18:00.
Arrival Airport/City Code	1	M	/IATA_LocationCode	IATA 3-letters airport/city code.
Arrival Terminal	0...1	O	/TerminalName	Terminal arrival. Not returned in case the airport has only one terminal.
<b>Departure structure</b>	<b>1</b>	<b>M</b>	<b>.../Response/DataLists/DatedOperatingLegList/DateDatedOperatingLeg/Dep</b>	

Designation	Repetition	Status	Location	Comments
Aircraft scheduled departure	0...1	O	/AircraftScheduledDate Time	Arrival date & time, in local time (YYYY-MM-DDTHH:MM:SS). Example: 2024-03-08T10:10:00.
Departure Airport/City Code	1	M	/IATA_LocationCode	IATA 3-letters airport/city code.
Departure Terminal	0...1	O	/TerminalName	Terminal departure. Not returned in case the airport has only one terminal.

```

<DatedOperatingLegList>
  <DatedOperatingLeg>
    <Arrival>
      <AircraftScheduledDateTime>2024-03-08T10:18:00</AircraftScheduledDateTime>
      <IATA_LocationCode>SYD</IATA_LocationCode>
      <TerminalName>2</TerminalName>
    </Arrival>
    <DatedOperatingLegID>LEG1</DatedOperatingLegID>
    <Dep>
      <AircraftScheduledDateTime>2024-03-08T10:10:00</AircraftScheduledDateTime>
      <IATA_LocationCode>SIN</IATA_LocationCode>
      <TerminalName>1</TerminalName>
    </Dep>
    <IATA_AircraftType>
      <IATA_AircraftTypeCode>388</IATA_AircraftTypeCode>
    </IATA_AircraftType>
  </DatedOperatingLeg>
</DatedOperatingLegList>

```

Table 20 Dated Operating Leg List

## Dated Marketing Segment List

This section describes the commercial designation under which a Dated Operating Segment can be booked, it can be either the operating carrier itself (when pure prime flight) or another carrier in case of codeshare.

Designation	Repetition	Status	Location	Comments
<b>DatedMarketingSegment</b>	<b>1...N</b>	<b>M</b>	<b>.../Response/DataLists/DatedMarketingSegmentList/DatedMarketingSegment</b>	
Marketing Carrier Code	1	M	/CarrierDesigCode	Airline Code (2 alphanumeric identifier).
CarrierName	0...1	O	/CarrierName	Commercial name of the carrier.
Marketing Segment ID	1	M	/DatedMarketingSegmentId	Unique identifier that will be used as reference in <i>PaxSegmentList</i> node.



Designation	Repetition	Status	Location	Comments
				Always starts with <b>DMS</b> ( <b>DatedMarketingSegment</b> ) followed by a number Example: DMS15.
Operating Segment ID	1	M	/DatedOperatingSegmentRefId	Reference to <u>DatedOperatingSegmentID</u> defined in <i>DatedOperatingSegmentList</i> node. Always starts with <b>DOS</b> ( <b>DatedOperatingSegment</b> ) followed by a number. Example: DOS15.
Marketing Carrier Flight number	1	M	/MarketingCarrierFlightNumberText	Flight number of the Marketing carrier (can be different from Operating carrier flight number).
<b>Arrival structure</b>	<b>1</b>	<b>M</b>	<b>.../Response/DataLists/DatedMarketingSegmentList/DatedMarketingSegment/Arrival</b>	
Aircraft scheduled arrival	0...1	O	/AircraftScheduledDateTime	Arrival date & time, in Local time (YYYY-MM-DDTHH:MM:SS).Example: 2024-04-11T05:55:00.
Arrival Airport Code	1	M	/IATA_LocationCode	IATA 3-letters airport/city code .
Arrival Terminal	0...1	O	/TerminalName	Terminal arrival. Not returned if the airport has only one terminal.
<b>Departure structure</b>	<b>1</b>	<b>M</b>	<b>.../Response/DataLists/DatedMarketingSegmentList/DatedMarketingSegment/Dep</b>	
Aircraft scheduled departure	0...1	O	/AircraftScheduledDateTime	Departure date & time, in Local time (YYYY-MM-DDTHH:MM:SS).Example: 2024-04-10T19:30:00.
Departure Airport Code	1	M	/IATA_LocationCode	IATA 3-letters airport/city code.
Departure Terminal	0...1	O	/TerminalName	Terminal departure. Not returned if the airport has only one terminal.

```

<DatedMarketingSegmentList>
  <DatedMarketingSegment>
    <Arrival>
      <AircraftScheduledDateTime>2024-04-
11T05:55:00</AircraftScheduledDateTime>
      <IATA_LocationCode>SYD</IATA_LocationCode>
      <TerminalName>2</TerminalName>
    </Arrival>
    <CarrierDesigCode>6X</CarrierDesigCode>
    <CarrierName>AMADEUS SIX</CarrierName>
    <DatedMarketingSegmentId>DMS15</DatedMarketingSegmentId>
    <DatedOperatingSegmentRefId>DOS15</DatedOperatingSegmentRefId>
    <Dep>
      <AircraftScheduledDateTime>2024-04-
10T19:30:00</AircraftScheduledDateTime>
      <IATA_LocationCode>SIN</IATA_LocationCode>
      <TerminalName>1</TerminalName>
    </Dep>

    <MarketingCarrierFlightNumberText>221</MarketingCarrierFlightNumberText>
  </DatedMarketingSegment>
</DatedMarketingSegmentList>

```

Table 21 Dated Marketing Segment List

## SeatProfileList

Seat Profile elements are optional.

Media elements per passengers:

The information provided in a media element are the reference of the media, its type and its URL

Designation	Repetition	Status	Location	Comments
<b>Seat Profile Implementation</b>			<b>IATA_SeatAvailabilityRS/Response/DataLists/SeatProfileList/SeatProfile</b>	
SeatProfile ID	1	M*	/SeatProfile/SeatProfileID	Unique ID of the SeatProfile. Prefix "MEDIA" if the seat profile is a media element. An incremental number is then append after the prefix.  SEGN: Segment Reference of Free seat.
Media reference	1	O	/SeatProfile/RichMedia/Content/ContentType	Reference of the linked media.
Type of media	1	O	/SeatProfile/RichMedia/DescText	Type of media. Example: PICTUREID.

Designation	Repetition	Status	Location	Comments
URL	1	O	/SeatProfile/RichMedia/ResourceURI	URL of the Media.

\*Mandatory if there is a Seat Profile.

```

<SeatProfileList>
  <SeatProfile>
    <RichMedia>
      <ContentType>MED1</ContentType>
      <DescText>PICTUREID</DescText>
      <ResourceURI>00042839</ResourceURI>
    </RichMedia>
    <SeatProfileID>MEDIA1-SEG15</SeatProfileID>
  </SeatProfile>
</SeatProfileList>

```

Table 22 SeatProfile list

## ServiceDefinitionList

The ServiceDefinition item is **not** mandatory.

This element is used to link Offer Item with seats, and to convey Pricing Indicator data as well as booking instructions to be taken into account during seatmap process.

Designation	Repetition	Status	Location	Comments
<b>Service definition Implementation</b>			<b>IATA_SeatAvailabilityRS/Response/DataLists/ServiceDefinitionList/ServiceDefinition</b>	
Service ID	1	M*	/ServiceDefinition/ServiceDefinitionID	Unique ID of the service.
Owner Code	1	M*	/ServiceDefinition/OwnerCode	Owner Code.
Service Name	1	M*	/ServiceDefinition/Name	Seat Commercial Name.
ATPCO group	1	O	/ServiceDefinition/Desc/DescText	ATPCO Group value when there is a group indicator.
Group Indicator	1	O	/ServiceDefinition/Desc/MarkupStyleText	Indicate if it is about group.
Pricing Indicator	0..N	O	/ServiceDefinition/Desc/DescText	If there is no Group, the refundable/Exchangeable indicator is placed here.  Reference value having prefix "REFUND_".  <b>It is linked to ChangeRestrictions.</b>

Designation	Repetition	Status	Location	Comments
Seat Profile reference	1	M*	/ServiceDefinition/ServiceDefinitionAssociation/SeatProfileRef/SeatProfileRefID	Reference to a Seat Profile.
Service Code	1	M	/ServiceDefinition/ServiceCode	Code needed to book the seat is always <b>RQST</b> .
RFIC	1	M	/ServiceDefinition/RFIC	Reason For Issuance Code. Examples: <ul style="list-style-type: none"> <li>• A (Air Transportation)</li> <li>• C (Baggage)</li> <li>• E (Airport Services)</li> <li>• F (Merchandise)</li> <li>• G (In-flight Services)</li> </ul>
RFISC	1	M	/ServiceDefinition/RFISC	Reason For Issuance SubCode. Examples: <ul style="list-style-type: none"> <li>• 0CC (First Checked Bag)</li> <li>• 0B1 (In-flight Entertainment)</li> <li>• 0BX (Lounge)</li> </ul>

\*Mandatory if there is a ServiceDefinition.

```

<ServiceDefinitionList>
  <ServiceDefinition>
    <Desc>
      <DescText>SA</DescText>
      <MarkupStyleText>Group</MarkupStyleText>
    </Desc>
    <Desc>
      <DescText>REFUND_3-SEG15</DescText>
    </Desc>
    <Name>PREMIUM SEAT</Name>
    <OwnerCode>6X</OwnerCode>
    <RFIC>A</RFIC>
    <RFISC>0B5</RFISC>
    <ServiceCode>RQST</ServiceCode>
    <ServiceDefinitionID>SD1-SEG15</ServiceDefinitionID>
  </ServiceDefinition>
</ServiceDefinitionList>

```

Table 23 Service Definition List

## Pack with Seat

For a pack with seat, the ServiceDefinition section is as follows:

Designation	Repetition	Status	Location	Comments
<b>Service definition Implementation</b>			<b>IATA_SeatAvailabilityRS/Response/DataLists/ServiceDefinitionList/ServiceDefinition</b>	
Service ID	1	M	/ServiceDefinition/ServiceDefinitionID	Unique ID of the service.
Owner Code	1	M	/ServiceDefinition/OwnerCode	Owner Code.
Service Name	1	M	/ServiceDefinition/Name	Name of the pack
Seat Profile reference	1	M	/ServiceDefinition/ServiceDefinitionAssociation/SeatProfileRef/SeatProfileRefID	Reference to a Seat Profile
Booking of specific SSR	0...N	O	/ServiceDefinition/BookingInstructions/SpecialService/SpecialServiceCode	SSR Code that needs to be booked along with the seat

```

<ServiceDefinitionList>
  <ServiceDefinition>
    <BookingInstructions>
      <SpecialService>
        <SpecialServiceCode>BSCT</SpecialServiceCode>
      </SpecialService>
    </BookingInstructions>
    <OwnerCode>6X</OwnerCode>
    <Name>PACK OF SEAT</Name>
    <ServiceDefinitionID>SD1-SEG15</ServiceDefinitionID>
  </ServiceDefinition>
</ServiceDefinitionList>

```

Table 24 Service Definition List for pack of service

## SeatMap

This element is used to describe the configuration of the aircraft.

The aircraft is composed by one or several compartments, i.e. a seats pattern (a given configuration of row/column) applicable to a zone of the aircraft.

A SeatMap element gathers configuration details about one compartment.

The seatmap reply contains **only the information about the cabin matching the requested booking class**. However, as the cabin matching the requested booking class could be defined accross several compartments, the seatmap reply could contains several SeatMap elements (all having at least one seat belonging to the targeted cabin).

For each SeatMap element, the following information is provided:

- Upper Deck indicator.
- Compartment (or engineering zone) code.
- Row characteristics: Overwing and Exit.
- Configuration of the compartment: list of columns' names and the range of rows.
- List of facilities along with their position.
- Cabin Code matching the requested booking class.
- List of seats belonging to the compartment with their characteristics.

Designation	Repetition	Status	Location	Comments
<b>SeatMap implementation</b>			<b>IATA_SeatAvailabilityRS/Response/SeatMap</b>	
Flight Reference	1	M	/SeatMap/PaxSegmentRefID	Reference to the flight segment defined under the DataLists element.
<b>Configuration of one compartment</b>			<b>IATA_SeatAvailabilityRS/Response/SeatMap/CabinCompartment</b>	
Engineering zone Code	1	M	CabinCompartment/DeckCode	Deck code. Enumeration : " <b>Lower</b> ", " <b>Main</b> " or " <b>Upper</b> ".
Cabin code	1	O	CabinCompartment/CabinType/CabinTypeCode	Cabin code. Example: "2". Cabin Type Code as defined by ATSB codeset 9873 <a href="#">from IATA XSD viewer</a> .
Configuration Columns	1...N	O	/CabinCompartment/SeatColumn/ColumnID	List all the columns of the Compartment. The format is a letter code.

Designation	Repetition	Status	Location	Comments
Configuration Range first row	1	O	/CabinCompartment/FirstRowNumber	Range of the Compartment: first row.
Configuration Range Last row	1	O	/CabinCompartment/LastRowNumber	Range of the Compartment: last row.
<b>Configuration for one component within the compartment</b>			<b>IATA_SeatAvailabilityRS/Response/SeatMap/CabinCompartment/CabinComponent</b>	
Row Reference	1	O	/CabinComponent/FirstRowNumber	Row number used as reference.
Row Reference (2)	1	O	/CabinComponent/LastRowNumber	Row number used as reference. Last row number is same as first row number.
Column Reference	1	O	/CabinComponent/ColumnID	Column number used as reference.
Row Relative Position	1	O	/CabinComponent/PositionCode	This field is used to give the relative orientation of the facility from the row. Possible value are <b>Before</b> or <b>After</b> .  If there is nothing, the Component is aligned.
Column Relative Orientation	1	O	/CabinComponent/OrientationCode	This field is used to give the relative orientation of the facility from the column. Possible value is right " <b>R</b> ", left " <b>L</b> " or aligned (" <b>I</b> ").
Facility type	1	O	/CabinComponent/CabinComponentTypeCode	Type of facility, based on "PADIS codeset 9825 - Seat characteristic, coded". "LA" for lavatory.
<b>Configuration for one row</b>			<b>IATA_SeatAvailabilityRS/Response/SeatMap/CabinCompartment/SeatRow</b>	
Row Number	1...N	O	/SeatRow/RowNumber	Number of the row.
Seat Row Characteristics	1...3	O	/SeatRow/RowCharacteristicCode	Characteristic of the row. Value can be "K" (Over wing) or "E" (Exit). In case the Exit is located in front or in the rear, another Characteristic code is added with "FRO" or "REA".
<b>Configuration for one seat within a row</b>			<b>IATA_SeatAvailabilityRS/Response/SeatMap/CabinCompartment/SeatRow/Seat</b>	
Row Number	1	M	/Seat/RowNumber	Number of the row.
Column ID	1	M	/Seat/ColumnID	Identifier of the column (e.g. A, B, C, etc.).

Designation	Repetition	Status	Location	Comments
Occupation code	1	0	/Seat/OccupationStat usCode	Occupation status. Values based on PADIS 9865.
Seat Characteristics	1...N	0	/Seat/SeatCharacteri sticCode	Characteristic of the seat. Values based on PADIS. Code 1 means Restricted, in such case the seat cannot be booked. See <a href="#">EDIFACT Standards for Seat Characteristics (9825)</a> for the code list.
Seat Profile Reference	1	0	/Seat/SeatProfileRefI D	Reference to a seat Profile.
Offer Item References	1..N	0	/Seat/OfferItemRefI D	References to Offer Items.

\*Mandatory if applicable

## Facilities

Here is an example of the way facilities are conveyed:



```

<CabinComponent>
  <CabinComponentTypeCode>GN</CabinComponentTypeCode>
  <ColumnID>D</ColumnID>
  <FirstRowNumber>41</FirstRowNumber>
  <LastRowNumber>41</LastRowNumber>
  <OrientationCode>I</OrientationCode>
  <PositionCode>Before</PositionCode>
</CabinComponent>
<CabinComponent>
  <CabinComponentTypeCode>GN</CabinComponentTypeCode>
  <ColumnID>E</ColumnID>
  <FirstRowNumber>41</FirstRowNumber>
  <LastRowNumber>41</LastRowNumber>
  <OrientationCode>I</OrientationCode>
</CabinComponent>
<CabinComponent>
  <CabinComponentTypeCode>GN</CabinComponentTypeCode>
  <ColumnID>F</ColumnID>
  <FirstRowNumber>41</FirstRowNumber>
  <LastRowNumber>41</LastRowNumber>
  <OrientationCode>I</OrientationCode>
</CabinComponent>
<CabinComponent>
  <CabinComponentTypeCode>GN</CabinComponentTypeCode>
  <ColumnID>G</ColumnID>
  <FirstRowNumber>41</FirstRowNumber>
  <LastRowNumber>41</LastRowNumber>
  <OrientationCode>I</OrientationCode>
</CabinComponent>
<CabinComponent>
  <CabinComponentTypeCode>GN</CabinComponentTypeCode>
  <ColumnID>D</ColumnID>
  <FirstRowNumber>42</FirstRowNumber>
  <LastRowNumber>42</LastRowNumber>
  <OrientationCode>I</OrientationCode>
</CabinComponent>
<CabinComponent>
  <CabinComponentTypeCode>GN</CabinComponentTypeCode>
  <ColumnID>E</ColumnID>
  <FirstRowNumber>42</FirstRowNumber>
  <LastRowNumber>42</LastRowNumber>
  <OrientationCode>I</OrientationCode>
</CabinComponent>
<CabinComponent>
  <CabinComponentTypeCode>LA</CabinComponentTypeCode>
  <ColumnID>A</ColumnID>
  <FirstRowNumber>58</FirstRowNumber>
  <LastRowNumber>58</LastRowNumber>
  <OrientationCode>I</OrientationCode>
</CabinComponent>
<CabinComponent>
  <CabinComponentTypeCode>LA</CabinComponentTypeCode>
  <ColumnID>D</ColumnID>

```

```

    <FirstRowNumber>58</FirstRowNumber>
    <LastRowNumber>58</LastRowNumber>
    <OrientationCode>I</OrientationCode>
</CabinComponent>
<CabinComponent>
    <CabinComponentTypeCode>LA</CabinComponentTypeCode>
    <ColumnID>G</ColumnID>
    <FirstRowNumber>58</FirstRowNumber>
    <LastRowNumber>58</LastRowNumber>
    <OrientationCode>I</OrientationCode>
</CabinComponent>

```

Table 25 Cabin Component

## Example of seatmap with two compartments

Exit is on a row without number and is in front of Row 41.

```

<SeatMap>
  <CabinCompartment>
    <CabinComponent>
      <CabinComponentTypeCode>GN</CabinComponentTypeCode>
      <ColumnID>D</ColumnID>
      <FirstRowNumber>41</FirstRowNumber>
      <LastRowNumber>41</LastRowNumber>
      <OrientationCode>I</OrientationCode>
      <PositionCode>Before</ns3:PositionCode>
    </CabinComponent>
    <CabinComponent>
      <CabinComponentTypeCode>GN</CabinComponentTypeCode>
      <ColumnID>E</ColumnID>
      <FirstRowNumber>41</FirstRowNumber>
      <LastRowNumber>41</LastRowNumber>
      <OrientationCode>I</OrientationCode>
    </CabinComponent>
    <CabinComponent>
      <CabinComponentTypeCode>GN</CabinComponentTypeCode>
      <ColumnID>F</ColumnID>
      <FirstRowNumber>41</FirstRowNumber>
      <LastRowNumber>41</LastRowNumber>
      <OrientationCode>I</OrientationCode>
    </CabinComponent>
    <CabinComponent>
      <CabinComponentTypeCode>GN</CabinComponentTypeCode>
      <ColumnID>G</ColumnID>
      <FirstRowNumber>41</FirstRowNumber>
      <LastRowNumber>41</LastRowNumber>
      <OrientationCode>I</OrientationCode>
    </CabinComponent>
    <CabinComponent>
      <CabinComponentTypeCode>GN</CabinComponentTypeCode>
      <ColumnID>D</ColumnID>
      <FirstRowNumber>42</FirstRowNumber>
      <LastRowNumber>42</LastRowNumber>
      <OrientationCode>I</OrientationCode>
    </CabinComponent>
    <CabinComponent>
      <CabinComponentTypeCode>GN</CabinComponentTypeCode>
      <ColumnID>E</ColumnID>
      <FirstRowNumber>42</FirstRowNumber>
      <LastRowNumber>42</LastRowNumber>
      <OrientationCode>I</OrientationCode>
    </CabinComponent>
    <CabinComponent>
      <CabinComponentTypeCode>LA</CabinComponentTypeCode>
      <ColumnID>A</ColumnID>
      <FirstRowNumber>58</FirstRowNumber>
      <LastRowNumber>58</LastRowNumber>
      <OrientationCode>I</OrientationCode>
    </CabinComponent>
  </CabinCompartment>
</SeatMap>

```

```

        <CabinComponentTypeCode>LA</CabinComponentTypeCode>
        <ColumnID>D</ColumnID>
        <FirstRowNumber>58</FirstRowNumber>
        <LastRowNumber>58</LastRowNumber>
        <OrientationCode>I</OrientationCode>
    </CabinComponent>
    <CabinComponent>
        <CabinComponentTypeCode>LA</CabinComponentTypeCode>
        <ColumnID>G</ColumnID>
        <FirstRowNumber>58</FirstRowNumber>
        <LastRowNumber>58</LastRowNumber>
        <OrientationCode>I</OrientationCode>
    </CabinComponent>
    <CabinType>
        <CabinTypeCode>5</CabinTypeCode>
    </CabinType>
    <DeckCode>Upper</DeckCode>
    <FirstRowNumber>41</FirstRowNumber>
    <LastRowNumber>58</LastRowNumber>
    <SeatColumn>
        <ColumnID>A</ColumnID>
    </SeatColumn>
    <SeatColumn>
        <ColumnID>B</ColumnID>
    </SeatColumn>
    <SeatColumn>
        <ColumnID>C</ColumnID>
    </SeatColumn>
    <SeatColumn>
        <ColumnID>D</ColumnID>
    </SeatColumn>
    <SeatColumn>
        <ColumnID>E</ColumnID>
    </SeatColumn>
    <SeatColumn>
        <ColumnID>F</ColumnID>
    </SeatColumn>
    <SeatColumn>
        <ColumnID>G</ColumnID>
    </SeatColumn>
    <SeatRow>
        <RowCharacteristicCode>E</RowCharacteristicCode>
        <RowCharacteristicCode>FRO</RowCharacteristicCode>
        <RowNumber>41</RowNumber>
        <Seat>
            <ColumnID>B</ColumnID>
            <OccupationStatusCode>F</OccupationStatusCode>
        </Seat>
    </SeatRow>
</OfferItemRefID>NlgtU0VHMTUtUEFYMi1VU0QtMC0wLTAtUlFTVC1BLTBCNS1GUkVFI FNFQVQtR1JPVVBtQSO
</OfferItemRefID>
    <RowNumber>41</RowNumber>
    <SeatCharacteristicCode>9</SeatCharacteristicCode>
    <SeatCharacteristicCode>CH</SeatCharacteristicCode>

```

```

        <SeatCharacteristicCode>E</SeatCharacteristicCode>
        <SeatCharacteristicCode>L</SeatCharacteristicCode>
        <SeatProfileRefID>MEDIA1-SEG15</SeatProfileRefID>
    </Seat>
    <Seat>
        <ColumnID>C</ColumnID>
        <OccupationStatusCode>F</OccupationStatusCode>

<OfferItemRefID>NlgtU0VHMTUtUEFYMi1VU0QtMC0wLTAtUlFTVC1BLTBCNS1GUkVFI FNFQVQtR1JPVVBTQSO
</OfferItemRefID>
    <RowNumber>41</RowNumber>
    <SeatCharacteristicCode>A</SeatCharacteristicCode>
    <SeatCharacteristicCode>CH</SeatCharacteristicCode>
    <SeatCharacteristicCode>E</SeatCharacteristicCode>
    <SeatCharacteristicCode>I</SeatCharacteristicCode>
    <SeatCharacteristicCode>L</SeatCharacteristicCode>
    <SeatProfileRefID>MEDIA1-SEG15</SeatProfileRefID>
</Seat>
<Seat>
    <ColumnID>H</ColumnID>
    <OccupationStatusCode>F</OccupationStatusCode>

<OfferItemRefID>NlgtU0VHMTUtUEFYMi1VU0QtMC0wLTAtUlFTVC1BLTBCNS1GUkVFI FNFQVQtR1JPVVBTQSO
</OfferItemRefID>
    <RowNumber>41</RowNumber>
    <SeatCharacteristicCode>A</SeatCharacteristicCode>
    <SeatCharacteristicCode>CH</SeatCharacteristicCode>
    <SeatCharacteristicCode>E</SeatCharacteristicCode>
    <SeatCharacteristicCode>I</SeatCharacteristicCode>
    <SeatCharacteristicCode>L</SeatCharacteristicCode>
    <SeatProfileRefID>MEDIA1-SEG15</SeatProfileRefID>
</Seat>
<Seat>
    <ColumnID>J</ColumnID>
    <OccupationStatusCode>F</OccupationStatusCode>

<OfferItemRefID>NlgtU0VHMTUtUEFYMi1VU0QtMC0wLTAtUlFTVC1BLTBCNS1GUkVFI FNFQVQtR1JPVVBTQSO
</OfferItemRefID>
    <RowNumber>41</RowNumber>
    <SeatCharacteristicCode>9</SeatCharacteristicCode>
    <SeatCharacteristicCode>CH</SeatCharacteristicCode>
    <SeatCharacteristicCode>E</SeatCharacteristicCode>
    <SeatCharacteristicCode>L</SeatCharacteristicCode>
    <SeatProfileRefID>MEDIA1-SEG15</SeatProfileRefID>
</Seat>
</SeatRow>
</CabinCompartment>
<PaxSegmentRefID>SEG15</PaxSegmentRefID>
</SeatMap>

```

Table 26 Seat Map with 2 compartment example

## Seat construction for multipax

- Pax 1 is eligible to a discount. All seats from row 41 are linked to ALaCarteOfferItem NlgtU0VHMTUtUEFYMS1VU0QtNzluMDAtMTluMDAtNjAuMDAtUIFTVC1BLTBCNS1TRUFULUdST1VQU0Et, containing the discount and for which only PAX1 is eligible.
- Pax2 is not eligible to a discount. Same seats are therefore linked to ALaCarteOfferItem NlgtU0VHMTUtUEFYMi1VU0QtMTcyLjAwLTEyLjAwLTE2MC4wMC1SUVNULUEtMEI1LVNFVQQtR1JPVVBtQS0, without the discount.

```

<SeatMap>
  <CabinCompartment>
    <CabinComponent>
      <CabinComponentTypeCode>GN</CabinComponentTypeCode>
      <ColumnID>D</ColumnID>
      <FirstRowNumber>41</FirstRowNumber>
      <LastRowNumber>41</LastRowNumber>
      <OrientationCode>I</OrientationCode>
      <PositionCode>Before</ns3:PositionCode>
    </CabinComponent>
    <CabinComponent>
      <CabinComponentTypeCode>GN</CabinComponentTypeCode>
      <ColumnID>E</ColumnID>
      <FirstRowNumber>41</FirstRowNumber>
      <LastRowNumber>41</LastRowNumber>
      <OrientationCode>I</OrientationCode>
    </CabinComponent>
    <CabinComponent>
      <CabinComponentTypeCode>GN</CabinComponentTypeCode>
      <ColumnID>F</ColumnID>
      <FirstRowNumber>41</FirstRowNumber>
      <LastRowNumber>41</LastRowNumber>
      <OrientationCode>I</OrientationCode>
    </CabinComponent>
    <CabinComponent>
      <CabinComponentTypeCode>GN</CabinComponentTypeCode>
      <ColumnID>G</ColumnID>
      <FirstRowNumber>41</FirstRowNumber>
      <LastRowNumber>41</LastRowNumber>
      <OrientationCode>I</OrientationCode>
    </CabinComponent>
    <CabinComponent>
      <CabinComponentTypeCode>GN</CabinComponentTypeCode>
      <ColumnID>D</ColumnID>
      <FirstRowNumber>42</FirstRowNumber>
      <LastRowNumber>42</LastRowNumber>
      <OrientationCode>I</OrientationCode>
    </CabinComponent>
    <CabinComponent>
      <CabinComponentTypeCode>GN</CabinComponentTypeCode>
      <ColumnID>E</ColumnID>
      <FirstRowNumber>42</FirstRowNumber>
      <LastRowNumber>42</LastRowNumber>
      <OrientationCode>I</OrientationCode>
    </CabinComponent>
    <CabinComponent>
      <CabinComponentTypeCode>LA</CabinComponentTypeCode>
      <ColumnID>A</ColumnID>
      <FirstRowNumber>58</FirstRowNumber>
      <LastRowNumber>58</LastRowNumber>
      <OrientationCode>I</OrientationCode>
    </CabinComponent>
  </CabinCompartment>
</SeatMap>

```

```

        <CabinComponentTypeCode>LA</CabinComponentTypeCode>
        <ColumnID>D</ColumnID>
        <FirstRowNumber>58</FirstRowNumber>
        <LastRowNumber>58</LastRowNumber>
        <OrientationCode>I</OrientationCode>
    </CabinComponent>
    <CabinComponent>
        <CabinComponentTypeCode>LA</CabinComponentTypeCode>
        <ColumnID>G</ColumnID>
        <FirstRowNumber>58</FirstRowNumber>
        <LastRowNumber>58</LastRowNumber>
        <OrientationCode>I</OrientationCode>
    </CabinComponent>
    <CabinType>
        <CabinTypeCode>6</CabinTypeCode>
    </CabinType>
    <DeckCode>Upper</DeckCode>
    <FirstRowNumber>41</FirstRowNumber>
    <LastRowNumber>58</LastRowNumber>
    <SeatColumn>
        <ColumnID>A</ColumnID>
    </SeatColumn>
    <SeatColumn>
        <ColumnID>B</ColumnID>
    </SeatColumn>
    <SeatColumn>
        <ColumnID>C</ColumnID>
    </SeatColumn>
    <SeatColumn>
        <ColumnID>D</ColumnID>
    </SeatColumn>
    <SeatColumn>
        <ColumnID>E</ColumnID>
    </SeatColumn>
    <SeatColumn>
        <ColumnID>F</ColumnID>
    </SeatColumn>
    <SeatColumn>
        <ColumnID>G</ColumnID>
    </SeatColumn>
    <SeatRow>
        <RowCharacteristicCode>E</RowCharacteristicCode>
        <RowCharacteristicCode>FRO</RowCharacteristicCode>
        <RowNumber>41</RowNumber>
        <Seat>
            <ColumnID>B</ColumnID>
            <OccupationStatusCode>F</OccupationStatusCode>
        </Seat>
    </SeatRow>
</OfferItemRefID>NlgtU0VHMTUtUEFYMS1VU0QtNzIuMDAtMTIuMDAtNjAuMDAtU1FTVC1BLTBCNS
1TRUFULUdST1VQU0Et</OfferItemRefID>

<OfferItemRefID>NlgtU0VHMTUtUEFYMi1VU0QtMTcyLjAwLTEyLjAwLTE2MC4wMC1SUVNULUEtME
I1LVNFQVQtR1JPVVBtQS0</OfferItemRefID>

```



```

        <RowNumber>41</RowNumber>
        <SeatCharacteristicCode>9</SeatCharacteristicCode>
        <SeatCharacteristicCode>CH</SeatCharacteristicCode>
        <SeatCharacteristicCode>E</SeatCharacteristicCode>
        <SeatCharacteristicCode>L</SeatCharacteristicCode>
        <SeatProfileRefID>MEDIA1-SEG15</SeatProfileRefID>
    </Seat>
    <Seat>
        <ColumnID>C</ColumnID>
        <OccupationStatusCode>F</OccupationStatusCode>

    <OfferItemRefID>NlgtU0VHMTUtUEFYMS1VU0QtNzIuMDAtMTIuMDAtNjAuMDAtU1FTVC1BLTBCNS
    1TRUFULUdST1VQU0Et</OfferItemRefID>

    <OfferItemRefID>NlgtU0VHMTUtUEFYMi1VU0QtMTcyLjAwLTEyLjAwLTE2MC4wMC1SUVNULUEtME
    I1LVNFQVQtR1JPVVBTQS0</OfferItemRefID>
        <RowNumber>41</RowNumber>
        <SeatCharacteristicCode>A</SeatCharacteristicCode>
        <SeatCharacteristicCode>CH</SeatCharacteristicCode>
        <SeatCharacteristicCode>E</SeatCharacteristicCode>
        <SeatCharacteristicCode>I</SeatCharacteristicCode>
        <SeatCharacteristicCode>L</SeatCharacteristicCode>
        <SeatProfileRefID>MEDIA1-SEG15</SeatProfileRefID>
    </Seat>
    <Seat>
        <ColumnID>H</ColumnID>
        <OccupationStatusCode>F</OccupationStatusCode>

    <OfferItemRefID>NlgtU0VHMTUtUEFYMS1VU0QtNzIuMDAtMTIuMDAtNjAuMDAtU1FTVC1BLTBCNS
    1TRUFULUdST1VQU0Et</OfferItemRefID>

    <OfferItemRefID>NlgtU0VHMTUtUEFYMi1VU0QtMTcyLjAwLTEyLjAwLTE2MC4wMC1SUVNULUEtME
    I1LVNFQVQtR1JPVVBTQS0</OfferItemRefID>
        <RowNumber>41</RowNumber>
        <SeatCharacteristicCode>A</SeatCharacteristicCode>
        <SeatCharacteristicCode>CH</SeatCharacteristicCode>
        <SeatCharacteristicCode>E</SeatCharacteristicCode>
        <SeatCharacteristicCode>I</SeatCharacteristicCode>
        <SeatCharacteristicCode>L</SeatCharacteristicCode>
        <SeatProfileRefID>MEDIA1-SEG15</SeatProfileRefID>
    </Seat>
    <Seat>
        <ColumnID>J</ColumnID>
        <OccupationStatusCode>F</OccupationStatusCode>

    <OfferItemRefID>NlgtU0VHMTUtUEFYMS1VU0QtNzIuMDAtMTIuMDAtNjAuMDAtU1FTVC1BLTBCNS
    1TRUFULUdST1VQU0Et</OfferItemRefID>

    <OfferItemRefID>NlgtU0VHMTUtUEFYMi1VU0QtMTcyLjAwLTEyLjAwLTE2MC4wMC1SUVNULUEtME
    I1LVNFQVQtR1JPVVBTQS0</OfferItemRefID>
        <RowNumber>41</RowNumber>
        <SeatCharacteristicCode>9</SeatCharacteristicCode>
        <SeatCharacteristicCode>CH</SeatCharacteristicCode>

```

```

        <SeatCharacteristicCode>E</SeatCharacteristicCode>
        <SeatCharacteristicCode>L</SeatCharacteristicCode>
        <SeatProfileRefID>MEDIA1-SEG15</SeatProfileRefID>
    </Seat>
</SeatRow>
</CabinCompartment>
<PaxSegmentRefID>SEG15</PaxSegmentRefID>
</SeatMap>

```

Table 27 Seatmap example

## Warnings

Element containing the different warnings returned by the seatmap process.

A warning is encoded in case of the seatmap process encountered a limitation. In this case, a seatmap is still returned: this seatmap could be degraded

This section describes information related to Warning that can be returned in response of NDC messages.

Designation	Repetition	Status	Location	Comments
<b>Warning structure</b>	<b>1...N</b>	<b>O</b>	<b>.../Response/Warning</b>	
IATA Warning Code	0...1	O	/Code	Field Code is used to convey the IATA code of the warning.
Warning Description	0...1	O	/DescText	Warning description.  In case a non-IATA Warning is returned, this field includes a concatenation of the non-IATA Warning Code and the non-IATA Warning message with "-" as separator. Example: 600 - NOT ALL CHARGEABLE SEATS HAVE BEEN PRICED.
Language Code	1	M	/LangCode	Language code associated with the warning response.
TagText	0...1	O	/TagText	Identifies the tag/XPath which relates to the provided Warning.
TypeCode	0...1	O	/TypeCode	Uses a bilaterally agreed set of values to indicate the warning type.

```

<Warning>
  <Code>710</Code>
  <DescText>13555 - Cabin varies over legs.</DescText>
  <LangCode>EN</LangCode>
  <TypeCode>W</TypeCode>
</Warning>

```

Table 28 Example of a non IATA warning

Here is the list of possible warnings:

IATA Warning Code	Warning Message	Description
710	13555 - Cabin varies over legs	Some seats belong to different cabins on the different legs.
710	195 - COG FLIGHT - NEXT SEGMENT FOR FOLLOW-UP ENTRY: + information of the next leg	Change of gauge flights.
710	600 - NOT ALL CHARGEABLE SEATS HAVE BEEN PRICED	At least one chargeable seat does not have a matching sequence in catalog reply.
710	601 - ERROR DURING PRICING PROCESS	Communication issue with ATPCO catalog
710	602 - ERROR DURING PRICING PROCESS	Communication unavailable with ATPCO catalog
710	603 - PRICING ERROR - PRICING ON MULTI-LEG FLIGHTS IS NOT ALLOWED	Seatmap with price on multileg flights is not supported.
710	604 - CHARGEABLE SEATS HAVE NOT BEEN PRICED (NO MATCHING)	None of the chargeable seats have a matching sequence in catalog reply
710	605 - PRICING ERROR + error number returned by pricing + - + Text message returned by pricing	A pricing error is received from from catalog reply.
710	606 - SEATMAP WITH PRICE NOT SUPPORTED - 9 PASSENGERS MAX	Seat map with price is not allowed on a PNR with more than 9 passengers
710	620 - Invalid Option	Option provided in input of the seatmap query has an invalid format.
710	8741 - FREQUENT FLYER NUMBER IS INVALID	At least one of the provided FQTV number is invalid.
710	40449 - REQUESTED TRAVELER PROFILE INFO IGNORED	Frequent Flyer Traveller information in input ignored
710	40459 - REQUESTED CORPORATE PROFILE INFO IGNORED	Corporate information in input ignored

## Errors

Element containing the different errors returned by the seatmap process.  
An error is encoded in case of **the seatmap process failed**.

If a blocking error occurred during the process, the Error Structure is returned and filled.

Designation	Repetition	Status	Location	Comments
<b>Error structure</b>	<b>1...N</b>	<b>M</b>	<b>.../Error</b>	
Code	0...1	O	/Code	Error code.
DescText	0...1	O	/DescText	Free text description of the provided error.
LangCode	1	M	/LangCode	The two letters ISO language code associated with the error response.
TypeCode	1	M	/TypeCode	E - Error with impact on flow execution. W - Warning with no impact on flow execution. F - Fatal error that causes flow termination.

```

<Error>
  <Code>911</Code>
  <DescText>UNABLE TO RETRIEVE OFFER</DescText>
  <LangCode>EN</LangCode>
  <TypeCode>E</TypeCode>
</Error>

```

Table 29 Error

### Non-exhaustive list of errors supported

SeatAvailability	
Error Code	Error Description
911	UNABLE TO RETRIEVE OFFER
715	INVALID FARE BASIS
160	INVALID PASSENGER SELECTION
129	NO MATCH FOR RECORD LOCATOR
911	UNABLE TO RETRIEVE PNR: OK

715	INVALID REQUESTED BOUND
73R	INVALID FARE BASIS

Here is the list of possible errors:

IATA Error Code	Error Message	Description
15	Flight cancelled	
26	No seat selection on this flight	
96	Repeat request updating in progress	
99	Seat map not available for requested zone, seat may be requested	
102	Seat map not available, request seat at check-in	Error returned when the seatmap is demigrated to an external inventory.
102	Check date range	Error returned when the date requested is outside the allowed period.
102	Unable to process	Generic error returned in case the seatmap process could not be done.
102	Communications not available	Error returned when SI returns a CONTRL message.
236	Seat Request not available as flight operated by another carrier	Error returned in case of codeshare seatmap request when no cascading is code to the operating inventory.
710	Link to inventory system is unavailable	Error message returned when the operating airline is not Altea Inventory. For the time being, SeatAvailability NDC verb is supported only for Altea Inventory airlines.
710	Invalid format/data - data does not match syntax rules	Error message returned when the format of the message received is not compliant with the grammar of SeatAvailabilityRQ.
710	No matching PNRs found for this search request	Error message returned when the provided recloc is invalid. Note that an empty value will be bypassed.
715	INVALID FARE BASIS	The segment reference specified in input of SeatAvailability request is not part of offer/order
73R	INVALID REQUESTED BOUND	The segment reference specified in input of SeatAvailability request is not part of offer/order

# Detailed Use Cases

## Building A Query Examples

Example from Offer - Segment in input

Options:

- Segment is specified in input
- The passenger has one Frequent Flyer Traveller card in the offer, that is considered.

```

<IATA_SeatAvailabilityRQ>
  <DistributionChain>
    <DistributionChainLink>
      <ContactInfo>
        <ContactInfoID>123456</ContactInfoID>
        <EmailAddress>
          <EmailAddressText>TEST@AMADEUS.COM</EmailAddressText>
        </EmailAddress>
        <Phone>
          <PhoneNumber>+33493101010</PhoneNumber>
        </Phone>
      </ContactInfo>
      <Ordinal>1</Ordinal>
      <OrgRole>Seller</OrgRole>
      <ParticipatingOrg>
        <OrgID>12457896</OrgID>
      </ParticipatingOrg>
    </DistributionChainLink>
    <DistributionChainLink>
      <Ordinal>2</Ordinal>
      <OrgRole>Distributor</OrgRole>
      <ParticipatingOrg>
        <OrgID>1A</OrgID>
      </ParticipatingOrg>
    </DistributionChainLink>
    <DistributionChainLink>
      <Ordinal>3</Ordinal>
      <OrgRole>Carrier</OrgRole>
      <ParticipatingOrg>
        <OrgID>6X</OrgID>
      </ParticipatingOrg>
    </DistributionChainLink>
  </DistributionChain>
  <POS>
    <Country>
      <CountryCode>FR</CountryCode>
    </Country>
  </POS>
  <Request>
    <Pax>
      <PaxID>PAX1</PaxID>
      <PTC>ADT</PTC>
    </Pax>
    <SeatAvailCoreRequest>
      <OfferRequest>
        <Offer>
          <OfferID>Ui6awgrhebjsdf_re6ftuwehjzxb</OfferID>
          <OfferItem>
            <OfferItemID>B6rywadhawgdjb</OfferItemID>
            <OwnerCode>6X</OwnerCode>
            <PaxSegmentRefID>SEG1</PaxSegmentRefID>
          </OfferItem>
          <OwnerCode>6X</OwnerCode>
        </Offer>
      </OfferRequest>
    </SeatAvailCoreRequest>
  </Request>
</IATA_SeatAvailabilityRQ>

```

```
        </Offer>  
      </OfferRequest>  
    </SeatAvailCoreRequest>  
  </Request>  
</IATA_SeatAvailabilityRQ>
```

Table 30 SeatAvailability from Offer - segment in input

Example from Offer - No segment in input/family case



```

<IATA_SeatAvailabilityRQ>
  <DistributionChain>
    <DistributionChainLink>
      <Ordinal>1</Ordinal>
      <OrgRole>Seller</OrgRole>
      <ParticipatingOrg>
        <OrgID>12457896</OrgID>
      </ParticipatingOrg>
    </DistributionChainLink>
    <DistributionChainLink>
      <Ordinal>2</Ordinal>
      <OrgRole>Distributor</OrgRole>
      <ParticipatingOrg>
        <OrgID>1A</OrgID>
      </ParticipatingOrg>
    </DistributionChainLink>
    <DistributionChainLink>
      <Ordinal>3</Ordinal>
      <OrgRole>Carrier</OrgRole>
      <ParticipatingOrg>
        <OrgID>6X</OrgID>
      </ParticipatingOrg>
    </DistributionChainLink>
  </DistributionChain>
  <PayloadAttributes>
    <VersionNumber>21.3</VersionNumber>
  </PayloadAttributes>
  <POS>
    <Country>
      <CountryCode>FR</CountryCode>
    </Country>
  </POS>
  <Request>
    <Pax>
      <PaxID>PAX1</PaxID>
      <PTC>ADT</PTC>
    </Pax>
    <Pax>
      <PaxID>PAX2</PaxID>
      <PTC>ADT</PTC>
    </Pax>
    <Pax>
      <PaxID>PAX3</PaxID>
      <PTC>CHD</PTC>
    </Pax>
    <Pax>
      <PaxID>PAX11</PaxID>
      <PTC>INF</PTC>
    </Pax>
    <SeatAvailCoreRequest>
      <OfferRequest>
        <Offer>

```

```

<OfferID>7r6weghwefbTFhvs6FVSBtsfdhsedye7b_e7fgsef</OfferID>
  <OfferItem>
    <OfferItemID>N7gswfjwegfuabja</OfferItemID>
  </OfferItem>
  <OwnerCode>6X</OwnerCode>
</Offer>
</OfferRequest>
</SeatAvailCoreRequest>
</Request>
</IATA_SeatAvailabilityRQ>

```

Table 31 SeatAvailability from Offer - no segment in input

## Example from Order - Segment in input

Options:

- Segment is specified in input
- two passengers:
  - pax1 has one Frequent Flyer Traveller card in the order, that is considered and is traveling with an infant
  - pax2: child passenger

```

<IATA_SeatAvailabilityRQ>
  <DistributionChain>
    <DistributionChainLink>
      <ContactInfo>
        <ContactInfoID>123456</ContactInfoID>
        <EmailAddress>
          <EmailAddressText>TEST@AMADEUS.COM</EmailAddressText>
        </EmailAddress>
        <Phone>
          <PhoneNumber>+33493101010</PhoneNumber>
        </Phone>
      </ContactInfo>
      <Ordinal>1</Ordinal>
      <OrgRole>Seller</OrgRole>
      <ParticipatingOrg>
        <Name>Seller</Name>
        <OrgID>12457896</OrgID>
      </ParticipatingOrg>
    </DistributionChainLink>
    <DistributionChainLink>
      <Ordinal>2</Ordinal>
      <OrgRole>Distributor</OrgRole>
      <ParticipatingOrg>
        <OrgID>1A</OrgID>
      </ParticipatingOrg>
    </DistributionChainLink>
    <DistributionChainLink>
      <Ordinal>3</Ordinal>
      <OrgRole>Carrier</OrgRole>
      <ParticipatingOrg>
        <OrgID>6X</OrgID>
      </ParticipatingOrg>
    </DistributionChainLink>
  </DistributionChain>
  <POS>
    <Country>
      <CountryCode>FR</CountryCode>
    </Country>
  </POS>
  <Request>
    <Pax>
      <PaxID>PAX1</PaxID>
      <PTC>ADT</PTC>
    </Pax>
    <Pax>
      <PaxID>PAX11</PaxID>
      <PTC>INF</PTC>
    </Pax>
    <Pax>
      <PaxID>PAX2</PaxID>
      <PTC>CHD</PTC>
    </Pax>
  </Request>
</SeatAvailCoreRequest>

```

```

    <OrderRequest>
      <Order>
        <OrderID>6X123A1B2C300</OrderID>
        <OrderItem>
          <OrderItemID>6X123A1B2C300_AIR_1</OrderItemID>
          <OwnerCode>6X</OwnerCode>
          <PaxSegmentRefID>SEG1</PaxSegmentRefID>
        </OrderItem>
        <OwnerCode>6X</OwnerCode>
      </Order>
    </OrderRequest>
  </SeatAvailCoreRequest>
</Request>
</IATA_SeatAvailabilityRQ>

```

Table 32 SeatAvailability from Order - segment in input

## Example from Order - No Segment in input

```

<IATA_SeatAvailabilityRQ>
  <DistributionChain>
    <DistributionChainLink>
      <Ordinal>1</Ordinal>
      <OrgRole>Seller</OrgRole>
      <ParticipatingOrg>
        <OrgID>12457896</OrgID>
      </ParticipatingOrg>
    </DistributionChainLink>
    <DistributionChainLink>
      <Ordinal>2</Ordinal>
      <OrgRole>Distributor</OrgRole>
      <ParticipatingOrg>
        <OrgID>1A</OrgID>
      </ParticipatingOrg>
    </DistributionChainLink>
    <DistributionChainLink>
      <Ordinal>3</Ordinal>
      <OrgRole>Carrier</OrgRole>
      <ParticipatingOrg>
        <OrgID>6X</OrgID>
      </ParticipatingOrg>
    </DistributionChainLink>
  </DistributionChain>
  <Request>
    <Pax>
      <PaxID>PAX4</PaxID>
      <PTC>CHD</PTC>
    </Pax>
    <Pax>
      <PaxID>PAX2</PaxID>
      <PTC>ADT</PTC>
    </Pax>
    <SeatAvailCoreRequest>
      <OrderRequest>
        <Order>
          <OrderID>6X105JB6J9E00</OrderID>
          <OrderItem>
            <OrderItemID>6X105JB6J9E00_AIR-1-2</OrderItemID>
            <OwnerCode>6X</OwnerCode>
          </OrderItem>
          <OwnerCode>6X</OwnerCode>
        </Order>
      </OrderRequest>
    </SeatAvailCoreRequest>
  </Request>
</IATA_SeatAvailabilityRQ>

```

Table 33 SeatAvailability from Order - no segment in input

## Example from Order - With Bassinet Seat

### Options:

- Prices
- one passenger: pax1 has one Frequent Flyer Traveller card in the order, that is considered and is traveling with an infant
- Bassinet Seat requested

```

<IATA_SeatAvailabilityRQ>
  <DistributionChain>
    <DistributionChainLink>
      <ContactInfo>
        <ContactInfoID>123456</ContactInfoID>
        <EmailAddress>
          <EmailAddressText>TEST@AMADEUS.COM</EmailAddressText>
        </EmailAddress>
        <Phone>
          <PhoneNumber>+33493101010</PhoneNumber>
        </Phone>
      </ContactInfo>
      <Ordinal>1</Ordinal>
      <OrgRole>Seller</OrgRole>
      <ParticipatingOrg>
        <OrgID>12457896</OrgID>
      </ParticipatingOrg>
    </DistributionChainLink>
    <DistributionChainLink>
      <Ordinal>2</Ordinal>
      <OrgRole>Distributor</OrgRole>
      <ParticipatingOrg>
        <OrgID>1A</OrgID>
      </ParticipatingOrg>
    </DistributionChainLink>
    <DistributionChainLink>
      <Ordinal>3</Ordinal>
      <OrgRole>Carrier</OrgRole>
      <ParticipatingOrg>
        <OrgID>6X</OrgID>
      </ParticipatingOrg>
    </DistributionChainLink>
  </DistributionChain>
  <POS>
    <Country>
      <CountryCode>FR</CountryCode>
    </Country>
  </POS>
  <Request>
    <Pax>
      <PaxID>PAX1</PaxID>
      <PTC>ADT</PTC>
      <Remark>
        <RemarkText>BASSINET</RemarkText>
      </Remark>
    </Pax>
    <Pax>
      <PaxID>PAX11</PaxID>
      <PTC>INF</PTC>
    </Pax>
    <SeatAvailCoreRequest>
      <OrderRequest>
        <Order>

```

```

        <OrderID>6X123A1B2C300</OrderID>
        <OrderItem>
            <OrderItemID>6X123A1B2C300_AIR_1</OrderItemID>
            <OwnerCode>6X</OwnerCode>
            <PaxSegmentRefID>SEG1</PaxSegmentRefID>
        </OrderItem>
        <OwnerCode>6X</OwnerCode>
    </Order>
</OrderRequest>
</SeatAvailCoreRequest>
</Request>
</IATA_SeatAvailabilityRQ>

```

Table 34 SeatAvailability from Order - Bassinet

## Building a Reply - Examples

### Example Seatmap

Seatmap requested for:

- One segment (LHR→NCE)
- Family case (1 ADT, 1 CHD, 1INF)
- Only free seats being returned



```

<IATA_SeatAvailabilityRS>
  <Response>
    <ALaCarteOffer>
      <OfferID>Byzfawygdw7ergjrnj</OfferID>
      <OfferItem>
        <ChangeRestrictions>
          <AllowedModificationInd>>true</AllowedModificationInd>
          <DescText>REFUND_1-SEG2</DescText>
          <Refund>
            <DescText>Service is refundable</DescText>
            <LevelTypeCode>Full</LevelTypeCode>
          </Refund>
        </ChangeRestrictions>
        <ChangeRestrictions>
          <AllowedModificationInd>>true</AllowedModificationInd>
          <DescText>REFUND_2-SEG2</DescText>
          <Refund>
            <DescText>Service not refundable but exchangeable</DescText>
            <LevelTypeCode>None</LevelTypeCode>
          </Refund>
        </ChangeRestrictions>
        <ChangeRestrictions>
          <AllowedModificationInd>>false</AllowedModificationInd>
          <DescText>REFUND_3-SEG2</DescText>
          <Refund>
            <DescText>Service not refundable and not exchangeable</DescText>
            <LevelTypeCode>None</LevelTypeCode>
          </Refund>
        </ChangeRestrictions>
        <Eligibility>
          <OfferFlightAssociations>
            <PaxSegmentReferences>
              <PaxSegmentRefID>SEG2</PaxSegmentRefID>
            </PaxSegmentReferences>
          </OfferFlightAssociations>
          <PaxRefID>PAX1</PaxRefID>
        </Eligibility>
      </OfferItem>
      <OfferItemID>NlgtU0VHMi1QQVgXLUVVUwLjAwLTAuMDAtMC4wMC1SUUVNULUEtMEI1LUZSRUUGU0VBVC0=</OfferItemID>
      <Service>
        <ServiceDefinitionRefID>SRV1-SEG2</ServiceDefinitionRefID>
        <ServiceID>1-SEG2</ServiceID>
      </Service>
      <UnitPrice>
        <BaseAmount CurCode="EUR">0.00</BaseAmount>
        <TaxSummary>
          <TotalTaxAmount CurCode="EUR">0.00</TotalTaxAmount>
        </TaxSummary>
        <TotalAmount CurCode="EUR">0.00</TotalAmount>
      </UnitPrice>
    </OfferItem>
  </OfferItem>

```

```

    <ChangeRestrictions>
      <AllowedModificationInd>true</AllowedModificationInd>
      <DescText>REFUND_1-SEG2</DescText>
      <Refund>
        <DescText>Service is refundable</DescText>
        <LevelTypeCode>Full</LevelTypeCode>
      </Refund>
    </ChangeRestrictions>
    <ChangeRestrictions>
      <AllowedModificationInd>true</AllowedModificationInd>
      <DescText>REFUND_2-SEG2</DescText>
      <Refund>
        <DescText>Service not refundable but exchangeable</DescText>
        <LevelTypeCode>None</LevelTypeCode>
      </Refund>
    </ChangeRestrictions>
    <ChangeRestrictions>
      <AllowedModificationInd>>false</AllowedModificationInd>
      <DescText>REFUND_3-SEG2</DescText>
      <Refund>
        <DescText>Service not refundable and not exchangeable</DescText>
        <LevelTypeCode>None</LevelTypeCode>
      </Refund>
    </ChangeRestrictions>
    <Eligibility>
      <OfferFlightAssociations>
        <PaxSegmentReferences>
          <PaxSegmentRefID>SEG2</PaxSegmentRefID>
        </PaxSegmentReferences>
      </OfferFlightAssociations>
      <PaxRefID>PAX2</PaxRefID>
    </Eligibility>

<OfferItemID>NlgtU0VHMi1QQVgyLUVVU10wLjAwLTAuMDAtMC4wMC1SUUVNULUEtMEI1LUZSRUUGU0VBVC0=</OfferItemID>

    <Service>
      <ServiceDefinitionRefID>SRV2-SEG2</ServiceDefinitionRefID>
      <ServiceID>2-SEG2</ServiceID>
    </Service>
    <UnitPrice>
      <BaseAmount CurCode="EUR">0.00</BaseAmount>
      <TaxSummary>
        <TotalTaxAmount CurCode="EUR">0.00</TotalTaxAmount>
      </TaxSummary>
      <TotalAmount CurCode="EUR">0.00</TotalAmount>
    </UnitPrice>
  </OfferItem>
  <OfferItem>
    <ChangeRestrictions>
      <AllowedModificationInd>true</AllowedModificationInd>
      <DescText>REFUND_1-SEG2</DescText>
      <Refund>
        <DescText>Service is refundable</DescText>

```

```

        <LevelTypeCode>Full</LevelTypeCode>
    </Refund>
</ChangeRestrictions>
<ChangeRestrictions>
    <AllowedModificationInd>>true</AllowedModificationInd>
    <DescText>REFUND_2-SEG2</DescText>
    <Refund>
        <DescText>Service not refundable but exchangeable</DescText>
        <LevelTypeCode>None</LevelTypeCode>
    </Refund>
</ChangeRestrictions>
<ChangeRestrictions>
    <AllowedModificationInd>>false</AllowedModificationInd>
    <DescText>REFUND_3-SEG2</DescText>
    <Refund>
        <DescText>Service not refundable and not exchangeable</DescText>
        <LevelTypeCode>None</LevelTypeCode>
    </Refund>
</ChangeRestrictions>
<Eligibility>
    <OfferFlightAssociations>
        <PaxSegmentReferences>
            <PaxSegmentRefID>SEG2</PaxSegmentRefID>
        </PaxSegmentReferences>
    </OfferFlightAssociations>
    <PaxRefID>PAX11</PaxRefID>
</Eligibility>

<OfferItemID>NlgtU0VHMi1QQVgxMS1FVVI tMC4wMC0wLjAwLT AuMDAtU1FTVC1BLTBCNS1GUkVFI FNFQVQt</O
fferItemID>
    <Service>
        <ServiceDefinitionRefID>SRV3-SEG2</ServiceDefinitionRefID>
        <ServiceID>3-SEG2</ServiceID>
    </Service>
    <UnitPrice>
        <BaseAmount CurCode="EUR">0.00</BaseAmount>
        <TaxSummary>
            <TotalTaxAmount CurCode="EUR">0.00</TotalTaxAmount>
        </TaxSummary>
        <TotalAmount CurCode="EUR">0.00</TotalAmount>
    </UnitPrice>
</OfferItem>
    <OwnerCode>6X</OwnerCode>
</ALaCarteOffer>
<DataLists>
    <DatedMarketingSegmentList>
        <DatedMarketingSegment>
            <Arrival>
                <AircraftScheduledDateTime>2023-05-
15T09:00:00</AircraftScheduledDateTime>
                <IATA_LocationCode>NCE</IATA_LocationCode>
            </Arrival>
            <CarrierDesigCode>6X</CarrierDesigCode>
        </DatedMarketingSegment>
    </DatedMarketingSegmentList>
</DataLists>

```

```

        <DatedMarketingSegmentId>DMS1</DatedMarketingSegmentId>
        <DatedOperatingSegmentRefId>DOS1</DatedOperatingSegmentRefId>
        <Dep>
            <AircraftScheduledDateTime>2023-05-
15T07:45:00</AircraftScheduledDateTime>
            <IATA_LocationCode>LHR</IATA_LocationCode>
        </Dep>

<MarketingCarrierFlightNumberText>0076</MarketingCarrierFlightNumberText>
    </DatedMarketingSegment>
</DatedMarketingSegmentList>
    <DatedOperatingLegList>
        <DatedOperatingLeg>
            <Arrival>
                <AircraftScheduledDateTime>2023-05-
15T09:00:00</AircraftScheduledDateTime>
                <IATA_LocationCode>NCE</IATA_LocationCode>
            </Arrival>
            <DatedOperatingLegID>LEG1</DatedOperatingLegID>
            <Dep>
                <AircraftScheduledDateTime>2023-05-
15T07:45:00</AircraftScheduledDateTime>
                <IATA_LocationCode>LHR</IATA_LocationCode>
            </Dep>
            <IATA_AircraftType>
                <IATA_AircraftTypeCode>CRJ</IATA_AircraftTypeCode>
            </IATA_AircraftType>
        </DatedOperatingLeg>
    </DatedOperatingLegList>
    <DatedOperatingSegmentList>
        <DatedOperatingSegment>
            <CarrierDesigCode/>
            <DatedOperatingLegRefID>LEG1</DatedOperatingLegRefID>
            <DatedOperatingSegmentId>DOS1</DatedOperatingSegmentId>
        </DatedOperatingSegment>
    </DatedOperatingSegmentList>
    <PaxList>
        <Pax>
            <PaxID>PAX1</PaxID>
            <PTC>ADT</PTC>
        </Pax>
        <Pax>
            <PaxID>PAX2</PaxID>
            <PTC>CHD</PTC>
        </Pax>
        <Pax>
            <PaxID>PAX11</PaxID>
            <PTC>INF</PTC>
        </Pax>
    </PaxList>
    <PaxSegmentList>
        <PaxSegment>
            <CabinTypeAssociationChoice>

```

```

        <SegmentCabinType>
            <CabinTypeCode>5</CabinTypeCode>
        </SegmentCabinType>
    </CabinTypeAssociationChoice>
    <DatedMarketingSegmentRefId>DMS1</DatedMarketingSegmentRefId>
    <MarketingCarrierRBD_Code>Y</MarketingCarrierRBD_Code>
    <PaxSegmentID>SEG2</PaxSegmentID>
</PaxSegment>
</PaxSegmentList>
<ServiceDefinitionList>
    <ServiceDefinition>
        <BookingInstructions>
            <SpecialService>
                <SpecialServiceCode>RQST</SpecialServiceCode>
            </SpecialService>
        </BookingInstructions>
        <Desc>
            <DescText>FREE SEAT</DescText>
        </Desc>
        <Name>FREE SEAT</Name>
        <OwnerCode>6X</OwnerCode>
        <RFIC>A</RFIC>
        <RFISC>0B5</RFISC>
        <ServiceDefinitionID>SRV1-SEG2</ServiceDefinitionID>
    </ServiceDefinition>
    <ServiceDefinition>
        <BookingInstructions>
            <SpecialService>
                <SpecialServiceCode>RQST</SpecialServiceCode>
            </SpecialService>
        </BookingInstructions>
        <Desc>
            <DescText>FREE SEAT</DescText>
        </Desc>
        <Name>FREE SEAT</Name>
        <OwnerCode>6X</OwnerCode>
        <RFIC>A</RFIC>
        <RFISC>0B5</RFISC>
        <ServiceDefinitionID>SRV2-SEG2</ServiceDefinitionID>
    </ServiceDefinition>
    <ServiceDefinition>
        <BookingInstructions>
            <SpecialService>
                <SpecialServiceCode>RQST</SpecialServiceCode>
            </SpecialService>
        </BookingInstructions>
        <Desc>
            <DescText>FREE SEAT</DescText>
        </Desc>
        <Name>FREE SEAT</Name>
        <OwnerCode>6X</OwnerCode>
        <RFIC>A</RFIC>
        <RFISC>0B5</RFISC>
    </ServiceDefinition>

```

```

        <ServiceDefinitionID>SRV3-SEG2</ServiceDefinitionID>
    </ServiceDefinition>
</ServiceDefinitionList>
</DataLists>
<Metadata/>
<SeatMap>
    <CabinCompartment>
        <CabinType>
            <CabinTypeCode>1</CabinTypeCode>
        </CabinType>
        <DeckCode>Main</DeckCode>
        <FirstRowNumber>1</FirstRowNumber>
        <LastRowNumber>4</LastRowNumber>
        <SeatColumn>
            <ColumnID>A</ColumnID>
        </SeatColumn>
        <SeatColumn>
            <ColumnID>B</ColumnID>
        </SeatColumn>
        <SeatColumn>
            <ColumnID>C</ColumnID>
        </SeatColumn>
        <SeatColumn>
            <ColumnID>D</ColumnID>
        </SeatColumn>
        <SeatRow>
            <RowNumber>1</RowNumber>
            <Seat>
                <ColumnID>C</ColumnID>
                <OccupationStatusCode>F</OccupationStatusCode>
            </Seat>
        </SeatRow>
    </CabinCompartment>
    <OfferItemRefID>NlgtU0VHMi1QQVgxLUVVUi0wLjAwLTAuMDAtMC4wMC1SUVNULUEtMEI1LUZSRUUGU0VBVC0=
</OfferItemRefID>
    <OfferItemRefID>NlgtU0VHMi1QQVgyLUVVUi0wLjAwLTAuMDAtMC4wMC1SUVNULUEtMEI1LUZSRUUGU0VBVC0=
</OfferItemRefID>
    <OfferItemRefID>NlgtU0VHMi1QQVgxMS1FVVItMC4wMC0wLjAwLTAuMDAtU1FTVC1BLTBCNS1GUkVFIFNFQVQt
</OfferItemRefID>
        <RowNumber>1</RowNumber>
        <SeatCharacteristicCode>A</SeatCharacteristicCode>
    </Seat>
    <Seat>
        <ColumnID>D</ColumnID>
        <OccupationStatusCode>F</OccupationStatusCode>
    </Seat>
    <OfferItemRefID>NlgtU0VHMi1QQVgxLUVVUi0wLjAwLTAuMDAtMC4wMC1SUVNULUEtMEI1LUZSRUUGU0VBVC0=
</OfferItemRefID>
    <OfferItemRefID>NlgtU0VHMi1QQVgyLUVVUi0wLjAwLTAuMDAtMC4wMC1SUVNULUEtMEI1LUZSRUUGU0VBVC0=
</OfferItemRefID>

```

```

<OfferItemRefID>NlgtU0VHMi1QQVgxMS1FVVIItMC4wMC0wLjAwLTAuMDAtUlFTVC1BLTBCNS1GUkVFIFNFQVQt
</OfferItemRefID>
    <RowNumber>1</RowNumber>
    <SeatCharacteristicCode>W</SeatCharacteristicCode>
  </Seat>
</SeatRow>
<SeatRow>
  <RowNumber>2</RowNumber>
  <Seat>
    <ColumnID>A</ColumnID>
    <OccupationStatusCode>F</OccupationStatusCode>

<OfferItemRefID>NlgtU0VHMi1QQVgxLUVVUi0wLjAwLTAuMDAtMC4wMC1SUVNULUEtMEI1LUZSRUUGU0VBVC0=
</OfferItemRefID>

<OfferItemRefID>NlgtU0VHMi1QQVgyLUVVUi0wLjAwLTAuMDAtMC4wMC1SUVNULUEtMEI1LUZSRUUGU0VBVC0=
</OfferItemRefID>

<OfferItemRefID>NlgtU0VHMi1QQVgxMS1FVVIItMC4wMC0wLjAwLTAuMDAtUlFTVC1BLTBCNS1GUkVFIFNFQVQt
</OfferItemRefID>
    <RowNumber>2</RowNumber>
    <SeatCharacteristicCode>W</SeatCharacteristicCode>
  </Seat>
  <Seat>
    <ColumnID>B</ColumnID>
    <OccupationStatusCode>F</OccupationStatusCode>

<OfferItemRefID>NlgtU0VHMi1QQVgxLUVVUi0wLjAwLTAuMDAtMC4wMC1SUVNULUEtMEI1LUZSRUUGU0VBVC0=
</OfferItemRefID>

<OfferItemRefID>NlgtU0VHMi1QQVgyLUVVUi0wLjAwLTAuMDAtMC4wMC1SUVNULUEtMEI1LUZSRUUGU0VBVC0=
</OfferItemRefID>

<OfferItemRefID>NlgtU0VHMi1QQVgxMS1FVVIItMC4wMC0wLjAwLTAuMDAtUlFTVC1BLTBCNS1GUkVFIFNFQVQt
</OfferItemRefID>
    <RowNumber>2</RowNumber>
    <SeatCharacteristicCode>A</SeatCharacteristicCode>
  </Seat>
  <Seat>
    <ColumnID>C</ColumnID>
    <OccupationStatusCode>F</OccupationStatusCode>

<OfferItemRefID>NlgtU0VHMi1QQVgxLUVVUi0wLjAwLTAuMDAtMC4wMC1SUVNULUEtMEI1LUZSRUUGU0VBVC0=
</OfferItemRefID>

<OfferItemRefID>NlgtU0VHMi1QQVgyLUVVUi0wLjAwLTAuMDAtMC4wMC1SUVNULUEtMEI1LUZSRUUGU0VBVC0=
</OfferItemRefID>

<OfferItemRefID>NlgtU0VHMi1QQVgxMS1FVVIItMC4wMC0wLjAwLTAuMDAtUlFTVC1BLTBCNS1GUkVFIFNFQVQt
</OfferItemRefID>
    <RowNumber>2</RowNumber>
    <SeatCharacteristicCode>A</SeatCharacteristicCode>
  
```

```

        </Seat>
        <Seat>
            <ColumnID>D</ColumnID>
            <OccupationStatusCode>F</OccupationStatusCode>

<OfferItemRefID>NlgtU0VHMi1QQVgxLUVVUi0wLjAwLTAuMDAtMC4wMC1SUVNULUEtMEI1LUZSRUUGU0VBVC0=
</OfferItemRefID>

<OfferItemRefID>NlgtU0VHMi1QQVgyLUVVUi0wLjAwLTAuMDAtMC4wMC1SUVNULUEtMEI1LUZSRUUGU0VBVC0=
</OfferItemRefID>

<OfferItemRefID>NlgtU0VHMi1QQVgxMS1FVVIItMC4wMC0wLjAwLTAuMDAtUlFTVC1BLTBCNS1GUkVFIFNFQVQt
</OfferItemRefID>
            <RowNumber>2</RowNumber>
            <SeatCharacteristicCode>W</SeatCharacteristicCode>
        </Seat>
    </SeatRow>
    <SeatRow>
        <RowNumber>3</RowNumber>
        <Seat>
            <ColumnID>A</ColumnID>
            <OccupationStatusCode>F</OccupationStatusCode>

<OfferItemRefID>NlgtU0VHMi1QQVgxLUVVUi0wLjAwLTAuMDAtMC4wMC1SUVNULUEtMEI1LUZSRUUGU0VBVC0=
</OfferItemRefID>

<OfferItemRefID>NlgtU0VHMi1QQVgyLUVVUi0wLjAwLTAuMDAtMC4wMC1SUVNULUEtMEI1LUZSRUUGU0VBVC0=
</OfferItemRefID>

<OfferItemRefID>NlgtU0VHMi1QQVgxMS1FVVIItMC4wMC0wLjAwLTAuMDAtUlFTVC1BLTBCNS1GUkVFIFNFQVQt
</OfferItemRefID>
            <RowNumber>3</RowNumber>
            <SeatCharacteristicCode>W</SeatCharacteristicCode>
        </Seat>
    <Seat>
        <ColumnID>B</ColumnID>
        <OccupationStatusCode>F</OccupationStatusCode>

<OfferItemRefID>NlgtU0VHMi1QQVgxLUVVUi0wLjAwLTAuMDAtMC4wMC1SUVNULUEtMEI1LUZSRUUGU0VBVC0=
</OfferItemRefID>

<OfferItemRefID>NlgtU0VHMi1QQVgyLUVVUi0wLjAwLTAuMDAtMC4wMC1SUVNULUEtMEI1LUZSRUUGU0VBVC0=
</OfferItemRefID>

<OfferItemRefID>NlgtU0VHMi1QQVgxMS1FVVIItMC4wMC0wLjAwLTAuMDAtUlFTVC1BLTBCNS1GUkVFIFNFQVQt
</OfferItemRefID>
            <RowNumber>3</RowNumber>
            <SeatCharacteristicCode>A</SeatCharacteristicCode>
        </Seat>
    <Seat>
        <ColumnID>C</ColumnID>
        <OccupationStatusCode>F</OccupationStatusCode>

```



```

<OfferItemRefID>NlgtU0VHMi1QQVgxLUVVUi0wLjAwLTAuMDAtMC4wMC1SUVNULUEtMEI1LUZSRUUGU0VBVC0=
</OfferItemRefID>

<OfferItemRefID>NlgtU0VHMi1QQVgyLUVVUi0wLjAwLTAuMDAtMC4wMC1SUVNULUEtMEI1LUZSRUUGU0VBVC0=
</OfferItemRefID>

<OfferItemRefID>NlgtU0VHMi1QQVgxMS1FVVIItMC4wMC0wLjAwLTAuMDAtUlFTVC1BLTBCNS1GUkVFIFNFQVQt
</OfferItemRefID>
    <RowNumber>3</RowNumber>
    <SeatCharacteristicCode>A</SeatCharacteristicCode>
  </Seat>
  <Seat>
    <ColumnID>D</ColumnID>
    <OccupationStatusCode>F</OccupationStatusCode>

<OfferItemRefID>NlgtU0VHMi1QQVgxLUVVUi0wLjAwLTAuMDAtMC4wMC1SUVNULUEtMEI1LUZSRUUGU0VBVC0=
</OfferItemRefID>

<OfferItemRefID>NlgtU0VHMi1QQVgyLUVVUi0wLjAwLTAuMDAtMC4wMC1SUVNULUEtMEI1LUZSRUUGU0VBVC0=
</OfferItemRefID>

<OfferItemRefID>NlgtU0VHMi1QQVgxMS1FVVIItMC4wMC0wLjAwLTAuMDAtUlFTVC1BLTBCNS1GUkVFIFNFQVQt
</OfferItemRefID>
    <RowNumber>3</RowNumber>
    <SeatCharacteristicCode>W</SeatCharacteristicCode>
  </Seat>
  </SeatRow>
  <SeatRow>
    <RowNumber>4</RowNumber>
    <Seat>
      <ColumnID>A</ColumnID>
      <OccupationStatusCode>F</OccupationStatusCode>

<OfferItemRefID>NlgtU0VHMi1QQVgxLUVVUi0wLjAwLTAuMDAtMC4wMC1SUVNULUEtMEI1LUZSRUUGU0VBVC0=
</OfferItemRefID>

<OfferItemRefID>NlgtU0VHMi1QQVgyLUVVUi0wLjAwLTAuMDAtMC4wMC1SUVNULUEtMEI1LUZSRUUGU0VBVC0=
</OfferItemRefID>

<OfferItemRefID>NlgtU0VHMi1QQVgxMS1FVVIItMC4wMC0wLjAwLTAuMDAtUlFTVC1BLTBCNS1GUkVFIFNFQVQt
</OfferItemRefID>
    <RowNumber>4</RowNumber>
    <SeatCharacteristicCode>W</SeatCharacteristicCode>
  </Seat>
  <Seat>
    <ColumnID>B</ColumnID>
    <OccupationStatusCode>F</OccupationStatusCode>

<OfferItemRefID>NlgtU0VHMi1QQVgxLUVVUi0wLjAwLTAuMDAtMC4wMC1SUVNULUEtMEI1LUZSRUUGU0VBVC0=
</OfferItemRefID>

```

```

<OfferItemRefID>NlgtU0VHMi1QQVgyLUVVUi0wLjAwLTAuMDAtMC4wMC1SUVNULUEtMEI1LUZSRUUGU0VBVC0=
</OfferItemRefID>

<OfferItemRefID>NlgtU0VHMi1QQVgxMS1FVVIItMC4wMC0wLjAwLTAuMDAtUlFTVC1BLTBCNS1GUkVFIFNFQVQt
</OfferItemRefID>
    <RowNumber>4</RowNumber>
    <SeatCharacteristicCode>A</SeatCharacteristicCode>
</Seat>
<Seat>
    <ColumnID>C</ColumnID>
    <OccupationStatusCode>F</OccupationStatusCode>

<OfferItemRefID>NlgtU0VHMi1QQVgyLUVVUi0wLjAwLTAuMDAtMC4wMC1SUVNULUEtMEI1LUZSRUUGU0VBVC0=
</OfferItemRefID>

<OfferItemRefID>NlgtU0VHMi1QQVgyLUVVUi0wLjAwLTAuMDAtMC4wMC1SUVNULUEtMEI1LUZSRUUGU0VBVC0=
</OfferItemRefID>

<OfferItemRefID>NlgtU0VHMi1QQVgxMS1FVVIItMC4wMC0wLjAwLTAuMDAtUlFTVC1BLTBCNS1GUkVFIFNFQVQt
</OfferItemRefID>
    <RowNumber>4</RowNumber>
    <SeatCharacteristicCode>A</SeatCharacteristicCode>
</Seat>
<Seat>
    <ColumnID>D</ColumnID>
    <OccupationStatusCode>F</OccupationStatusCode>

<OfferItemRefID>NlgtU0VHMi1QQVgxLUVVUi0wLjAwLTAuMDAtMC4wMC1SUVNULUEtMEI1LUZSRUUGU0VBVC0=
</OfferItemRefID>

<OfferItemRefID>NlgtU0VHMi1QQVgyLUVVUi0wLjAwLTAuMDAtMC4wMC1SUVNULUEtMEI1LUZSRUUGU0VBVC0=
</OfferItemRefID>

<OfferItemRefID>NlgtU0VHMi1QQVgxMS1FVVIItMC4wMC0wLjAwLTAuMDAtUlFTVC1BLTBCNS1GUkVFIFNFQVQt
</OfferItemRefID>
    <RowNumber>4</RowNumber>
    <SeatCharacteristicCode>W</SeatCharacteristicCode>
</Seat>
</SeatRow>
</CabinCompartment>
<CabinCompartment>
    <CabinType>
        <CabinTypeCode>5</CabinTypeCode>
    </CabinType>
    <DeckCode>Main</DeckCode>
    <FirstRowNumber>5</FirstRowNumber>
    <LastRowNumber>7</LastRowNumber>
    <SeatColumn>
        <ColumnID>A</ColumnID>
    </SeatColumn>
    <SeatColumn>
        <ColumnID>B</ColumnID>

```

```

        </SeatColumn>
        <SeatColumn>
            <ColumnID>C</ColumnID>
        </SeatColumn>
        <SeatColumn>
            <ColumnID>D</ColumnID>
        </SeatColumn>
        <SeatRow>
            <RowNumber>5</RowNumber>
            <Seat>
                <ColumnID>A</ColumnID>
                <OccupationStatusCode>F</OccupationStatusCode>

<OfferItemRefID>NlgtU0VHMi1QQVgxLUVVUi0wLjAwLTAuMDAtMC4wMC1SUVNULUEtMEI1LUZSRUUGU0VBVC0=
</OfferItemRefID>

<OfferItemRefID>NlgtU0VHMi1QQVgyLUVVUi0wLjAwLTAuMDAtMC4wMC1SUVNULUEtMEI1LUZSRUUGU0VBVC0=
</OfferItemRefID>

<OfferItemRefID>NlgtU0VHMi1QQVgxMS1FVVIItMC4wMC0wLjAwLTAuMDAtUlFTVC1BLTBCNS1GUkVFIFNFQVQt
</OfferItemRefID>
            <RowNumber>5</RowNumber>
            <SeatCharacteristicCode>W</SeatCharacteristicCode>
        </Seat>
        <Seat>
            <ColumnID>B</ColumnID>
            <OccupationStatusCode>F</OccupationStatusCode>

<OfferItemRefID>NlgtU0VHMi1QQVgxLUVVUi0wLjAwLTAuMDAtMC4wMC1SUVNULUEtMEI1LUZSRUUGU0VBVC0=
</OfferItemRefID>

<OfferItemRefID>NlgtU0VHMi1QQVgyLUVVUi0wLjAwLTAuMDAtMC4wMC1SUVNULUEtMEI1LUZSRUUGU0VBVC0=
</OfferItemRefID>

<OfferItemRefID>NlgtU0VHMi1QQVgxMS1FVVIItMC4wMC0wLjAwLTAuMDAtUlFTVC1BLTBCNS1GUkVFIFNFQVQt
</OfferItemRefID>
            <RowNumber>5</RowNumber>
            <SeatCharacteristicCode>A</SeatCharacteristicCode>
        </Seat>
        <Seat>
            <ColumnID>C</ColumnID>
            <OccupationStatusCode>F</OccupationStatusCode>

<OfferItemRefID>NlgtU0VHMi1QQVgxLUVVUi0wLjAwLTAuMDAtMC4wMC1SUVNULUEtMEI1LUZSRUUGU0VBVC0=
</OfferItemRefID>

<OfferItemRefID>NlgtU0VHMi1QQVgyLUVVUi0wLjAwLTAuMDAtMC4wMC1SUVNULUEtMEI1LUZSRUUGU0VBVC0=
</OfferItemRefID>

<OfferItemRefID>NlgtU0VHMi1QQVgxMS1FVVIItMC4wMC0wLjAwLTAuMDAtUlFTVC1BLTBCNS1GUkVFIFNFQVQt
</OfferItemRefID>
            <RowNumber>5</RowNumber>
            <SeatCharacteristicCode>A</SeatCharacteristicCode>

```

```

        </Seat>
        <Seat>
            <ColumnID>D</ColumnID>
            <OccupationStatusCode>F</OccupationStatusCode>

<OfferItemRefID>NlgtU0VHMi1QQVgxLUVVUi0wLjAwLTAuMDAtMC4wMC1SUVNULUEtMEI1LUZSRUUgU0VBVC0=
</OfferItemRefID>

<OfferItemRefID>NlgtU0VHMi1QQVgyLUVVUi0wLjAwLTAuMDAtMC4wMC1SUVNULUEtMEI1LUZSRUUgU0VBVC0=
</OfferItemRefID>

<OfferItemRefID>NlgtU0VHMi1QQVgxMS1FVVIItMC4wMC0wLjAwLTAuMDAtUlFTVC1BLTBCNS1GUkVFIFNFQVQt
</OfferItemRefID>
            <RowNumber>5</RowNumber>
            <SeatCharacteristicCode>W</SeatCharacteristicCode>
        </Seat>
    </SeatRow>
    <SeatRow>
        <RowNumber>6</RowNumber>
        <Seat>
            <ColumnID>A</ColumnID>
            <OccupationStatusCode>F</OccupationStatusCode>

<OfferItemRefID>NlgtU0VHMi1QQVgxLUVVUi0wLjAwLTAuMDAtMC4wMC1SUVNULUEtMEI1LUZSRUUgU0VBVC0=
</OfferItemRefID>

<OfferItemRefID>NlgtU0VHMi1QQVgyLUVVUi0wLjAwLTAuMDAtMC4wMC1SUVNULUEtMEI1LUZSRUUgU0VBVC0=
</OfferItemRefID>

<OfferItemRefID>NlgtU0VHMi1QQVgxMS1FVVIItMC4wMC0wLjAwLTAuMDAtUlFTVC1BLTBCNS1GUkVFIFNFQVQt
</OfferItemRefID>
            <RowNumber>6</RowNumber>
            <SeatCharacteristicCode>W</SeatCharacteristicCode>
        </Seat>
    <Seat>
        <ColumnID>B</ColumnID>
        <OccupationStatusCode>F</OccupationStatusCode>

<OfferItemRefID>NlgtU0VHMi1QQVgxLUVVUi0wLjAwLTAuMDAtMC4wMC1SUVNULUEtMEI1LUZSRUUgU0VBVC0=
</OfferItemRefID>

<OfferItemRefID>NlgtU0VHMi1QQVgyLUVVUi0wLjAwLTAuMDAtMC4wMC1SUVNULUEtMEI1LUZSRUUgU0VBVC0=
</OfferItemRefID>

<OfferItemRefID>NlgtU0VHMi1QQVgxMS1FVVIItMC4wMC0wLjAwLTAuMDAtUlFTVC1BLTBCNS1GUkVFIFNFQVQt
</OfferItemRefID>
            <RowNumber>6</RowNumber>
            <SeatCharacteristicCode>A</SeatCharacteristicCode>
        </Seat>
    <Seat>
        <ColumnID>C</ColumnID>
        <OccupationStatusCode>F</OccupationStatusCode>

```

```

<OfferItemRefID>NlgtU0VHMi1QQVgxLUVVUi0wLjAwLTAuMDAtMC4wMC1SUVNULUEtMEI1LUZSRUUGU0VBVC0=
</OfferItemRefID>

<OfferItemRefID>NlgtU0VHMi1QQVgyLUVVUi0wLjAwLTAuMDAtMC4wMC1SUVNULUEtMEI1LUZSRUUGU0VBVC0=
</OfferItemRefID>

<OfferItemRefID>NlgtU0VHMi1QQVgxMS1FVVIItMC4wMC0wLjAwLTAuMDAtUlFTVC1BLTBCNS1GUkVFIFNFQVQt
</OfferItemRefID>
    <RowNumber>6</RowNumber>
    <SeatCharacteristicCode>A</SeatCharacteristicCode>
</Seat>
<Seat>
    <ColumnID>D</ColumnID>
    <OccupationStatusCode>F</OccupationStatusCode>

<OfferItemRefID>NlgtU0VHMi1QQVgxLUVVUi0wLjAwLTAuMDAtMC4wMC1SUVNULUEtMEI1LUZSRUUGU0VBVC0=
</OfferItemRefID>

<OfferItemRefID>NlgtU0VHMi1QQVgyLUVVUi0wLjAwLTAuMDAtMC4wMC1SUVNULUEtMEI1LUZSRUUGU0VBVC0=
</OfferItemRefID>

<OfferItemRefID>NlgtU0VHMi1QQVgxMS1FVVIItMC4wMC0wLjAwLTAuMDAtUlFTVC1BLTBCNS1GUkVFIFNFQVQt
</OfferItemRefID>
    <RowNumber>6</RowNumber>
    <SeatCharacteristicCode>W</SeatCharacteristicCode>
</Seat>
</SeatRow>
<SeatRow>
    <RowNumber>7</RowNumber>
    <Seat>
        <ColumnID>A</ColumnID>
        <OccupationStatusCode>F</OccupationStatusCode>

<OfferItemRefID>NlgtU0VHMi1QQVgxLUVVUi0wLjAwLTAuMDAtMC4wMC1SUVNULUEtMEI1LUZSRUUGU0VBVC0=
</OfferItemRefID>

<OfferItemRefID>NlgtU0VHMi1QQVgyLUVVUi0wLjAwLTAuMDAtMC4wMC1SUVNULUEtMEI1LUZSRUUGU0VBVC0=
</OfferItemRefID>

<OfferItemRefID>NlgtU0VHMi1QQVgxMS1FVVIItMC4wMC0wLjAwLTAuMDAtUlFTVC1BLTBCNS1GUkVFIFNFQVQt
</OfferItemRefID>
    <RowNumber>7</RowNumber>
    <SeatCharacteristicCode>W</SeatCharacteristicCode>
</Seat>
<Seat>
    <ColumnID>B</ColumnID>
    <OccupationStatusCode>F</OccupationStatusCode>

<OfferItemRefID>NlgtU0VHMi1QQVgxLUVVUi0wLjAwLTAuMDAtMC4wMC1SUVNULUEtMEI1LUZSRUUGU0VBVC0=
</OfferItemRefID>

```

```

<OfferItemRefID>NlgtU0VHMi1QQVgyLUVVUi0wLjAwLTAuMDAtMC4wMC1SUVNULUEtMEI1LUZSRUUgU0VBVC0=
</OfferItemRefID>

<OfferItemRefID>NlgtU0VHMi1QQVgxMS1FVVIItMC4wMC0wLjAwLTAuMDAtUlFTVC1BLTBCNS1GUkVFIFNFQVQt
</OfferItemRefID>
    <RowNumber>7</RowNumber>
    <SeatCharacteristicCode>A</SeatCharacteristicCode>
</Seat>
<Seat>
    <ColumnID>C</ColumnID>
    <OccupationStatusCode>F</OccupationStatusCode>

<OfferItemRefID>NlgtU0VHMi1QQVgyLUVVUi0wLjAwLTAuMDAtMC4wMC1SUVNULUEtMEI1LUZSRUUgU0VBVC0=
</OfferItemRefID>

<OfferItemRefID>NlgtU0VHMi1QQVgyLUVVUi0wLjAwLTAuMDAtMC4wMC1SUVNULUEtMEI1LUZSRUUgU0VBVC0=
</OfferItemRefID>

<OfferItemRefID>NlgtU0VHMi1QQVgxMS1FVVIItMC4wMC0wLjAwLTAuMDAtUlFTVC1BLTBCNS1GUkVFIFNFQVQt
</OfferItemRefID>
    <RowNumber>7</RowNumber>
    <SeatCharacteristicCode>A</SeatCharacteristicCode>
</Seat>
<Seat>
    <ColumnID>D</ColumnID>
    <OccupationStatusCode>F</OccupationStatusCode>

<OfferItemRefID>NlgtU0VHMi1QQVgxLUVVUi0wLjAwLTAuMDAtMC4wMC1SUVNULUEtMEI1LUZSRUUgU0VBVC0=
</OfferItemRefID>

<OfferItemRefID>NlgtU0VHMi1QQVgyLUVVUi0wLjAwLTAuMDAtMC4wMC1SUVNULUEtMEI1LUZSRUUgU0VBVC0=
</OfferItemRefID>

<OfferItemRefID>NlgtU0VHMi1QQVgxMS1FVVIItMC4wMC0wLjAwLTAuMDAtUlFTVC1BLTBCNS1GUkVFIFNFQVQt
</OfferItemRefID>
    <RowNumber>7</RowNumber>
    <SeatCharacteristicCode>W</SeatCharacteristicCode>
</Seat>
</SeatRow>
</CabinCompartment>
<CabinCompartment>
    <CabinType>
        <CabinTypeCode>2</CabinTypeCode>
    </CabinType>
    <DeckCode>Main</DeckCode>
    <FirstRowNumber>8</FirstRowNumber>
    <LastRowNumber>10</LastRowNumber>
    <SeatColumn>
        <ColumnID>A</ColumnID>
    </SeatColumn>
    <SeatColumn>
        <ColumnID>B</ColumnID>

```

```

        </SeatColumn>
        <SeatColumn>
            <ColumnID>C</ColumnID>
        </SeatColumn>
        <SeatColumn>
            <ColumnID>D</ColumnID>
        </SeatColumn>
        <SeatRow>
            <RowNumber>8</RowNumber>
            <Seat>
                <ColumnID>A</ColumnID>
                <OccupationStatusCode>F</OccupationStatusCode>

<OfferItemRefID>NlgtU0VHMi1QQVgxLUVVUi0wLjAwLTAuMDAtMC4wMC1SUVNULUEtMEI1LUZSRUUGU0VBVC0=
</OfferItemRefID>

<OfferItemRefID>NlgtU0VHMi1QQVgyLUVVUi0wLjAwLTAuMDAtMC4wMC1SUVNULUEtMEI1LUZSRUUGU0VBVC0=
</OfferItemRefID>

<OfferItemRefID>NlgtU0VHMi1QQVgxMS1FVVIItMC4wMC0wLjAwLTAuMDAtUlFTVC1BLTBCNS1GUkVFIFNFQVQt
</OfferItemRefID>
            <RowNumber>8</RowNumber>
            <SeatCharacteristicCode>W</SeatCharacteristicCode>
        </Seat>
        <Seat>
            <ColumnID>B</ColumnID>
            <OccupationStatusCode>F</OccupationStatusCode>

<OfferItemRefID>NlgtU0VHMi1QQVgxLUVVUi0wLjAwLTAuMDAtMC4wMC1SUVNULUEtMEI1LUZSRUUGU0VBVC0=
</OfferItemRefID>

<OfferItemRefID>NlgtU0VHMi1QQVgyLUVVUi0wLjAwLTAuMDAtMC4wMC1SUVNULUEtMEI1LUZSRUUGU0VBVC0=
</OfferItemRefID>

<OfferItemRefID>NlgtU0VHMi1QQVgxMS1FVVIItMC4wMC0wLjAwLTAuMDAtUlFTVC1BLTBCNS1GUkVFIFNFQVQt
</OfferItemRefID>
            <RowNumber>8</RowNumber>
            <SeatCharacteristicCode>A</SeatCharacteristicCode>
        </Seat>
        <Seat>
            <ColumnID>C</ColumnID>
            <OccupationStatusCode>F</OccupationStatusCode>

<OfferItemRefID>NlgtU0VHMi1QQVgxLUVVUi0wLjAwLTAuMDAtMC4wMC1SUVNULUEtMEI1LUZSRUUGU0VBVC0=
</OfferItemRefID>

<OfferItemRefID>NlgtU0VHMi1QQVgyLUVVUi0wLjAwLTAuMDAtMC4wMC1SUVNULUEtMEI1LUZSRUUGU0VBVC0=
</OfferItemRefID>

<OfferItemRefID>NlgtU0VHMi1QQVgxMS1FVVIItMC4wMC0wLjAwLTAuMDAtUlFTVC1BLTBCNS1GUkVFIFNFQVQt
</OfferItemRefID>
            <RowNumber>8</RowNumber>
            <SeatCharacteristicCode>A</SeatCharacteristicCode>

```

```

        </Seat>
        <Seat>
            <ColumnID>D</ColumnID>
            <OccupationStatusCode>F</OccupationStatusCode>

<OfferItemRefID>NlgtU0VHMi1QQVgxLUVVUi0wLjAwLTAuMDAtMC4wMC1SUVNULUEtMEI1LUZSRUUgU0VBVC0=
</OfferItemRefID>

<OfferItemRefID>NlgtU0VHMi1QQVgyLUVVUi0wLjAwLTAuMDAtMC4wMC1SUVNULUEtMEI1LUZSRUUgU0VBVC0=
</OfferItemRefID>

<OfferItemRefID>NlgtU0VHMi1QQVgxMS1FVVIItMC4wMC0wLjAwLTAuMDAtUlFTVC1BLTBCNS1GUkVFIFNFQVQt
</OfferItemRefID>
            <RowNumber>8</RowNumber>
            <SeatCharacteristicCode>W</SeatCharacteristicCode>
        </Seat>
    </SeatRow>
    <SeatRow>
        <RowNumber>9</RowNumber>
        <Seat>
            <ColumnID>A</ColumnID>
            <OccupationStatusCode>F</OccupationStatusCode>

<OfferItemRefID>NlgtU0VHMi1QQVgxLUVVUi0wLjAwLTAuMDAtMC4wMC1SUVNULUEtMEI1LUZSRUUgU0VBVC0=
</OfferItemRefID>

<OfferItemRefID>NlgtU0VHMi1QQVgyLUVVUi0wLjAwLTAuMDAtMC4wMC1SUVNULUEtMEI1LUZSRUUgU0VBVC0=
</OfferItemRefID>

<OfferItemRefID>NlgtU0VHMi1QQVgxMS1FVVIItMC4wMC0wLjAwLTAuMDAtUlFTVC1BLTBCNS1GUkVFIFNFQVQt
</OfferItemRefID>
            <RowNumber>9</RowNumber>
            <SeatCharacteristicCode>W</SeatCharacteristicCode>
        </Seat>
    <Seat>
        <ColumnID>B</ColumnID>
        <OccupationStatusCode>F</OccupationStatusCode>

<OfferItemRefID>NlgtU0VHMi1QQVgxLUVVUi0wLjAwLTAuMDAtMC4wMC1SUVNULUEtMEI1LUZSRUUgU0VBVC0=
</OfferItemRefID>

<OfferItemRefID>NlgtU0VHMi1QQVgyLUVVUi0wLjAwLTAuMDAtMC4wMC1SUVNULUEtMEI1LUZSRUUgU0VBVC0=
</OfferItemRefID>

<OfferItemRefID>NlgtU0VHMi1QQVgxMS1FVVIItMC4wMC0wLjAwLTAuMDAtUlFTVC1BLTBCNS1GUkVFIFNFQVQt
</OfferItemRefID>
            <RowNumber>9</RowNumber>
            <SeatCharacteristicCode>A</SeatCharacteristicCode>
        </Seat>
    <Seat>
        <ColumnID>C</ColumnID>
        <OccupationStatusCode>F</OccupationStatusCode>

```



```

<OfferItemRefID>NlgtU0VHMi1QQVgxLUVVUi0wLjAwLTAuMDAtMC4wMC1SUVNULUEtMEI1LUZSRUUGU0VBVC0=
</OfferItemRefID>

<OfferItemRefID>NlgtU0VHMi1QQVgyLUVVUi0wLjAwLTAuMDAtMC4wMC1SUVNULUEtMEI1LUZSRUUGU0VBVC0=
</OfferItemRefID>

<OfferItemRefID>NlgtU0VHMi1QQVgxMS1FVVIItMC4wMC0wLjAwLTAuMDAtUlFTVC1BLTBCNS1GUkVFIFNFQVQt
</OfferItemRefID>
    <RowNumber>9</RowNumber>
    <SeatCharacteristicCode>A</SeatCharacteristicCode>
</Seat>
<Seat>
    <ColumnID>D</ColumnID>
    <OccupationStatusCode>F</OccupationStatusCode>

<OfferItemRefID>NlgtU0VHMi1QQVgxLUVVUi0wLjAwLTAuMDAtMC4wMC1SUVNULUEtMEI1LUZSRUUGU0VBVC0=
</OfferItemRefID>

<OfferItemRefID>NlgtU0VHMi1QQVgyLUVVUi0wLjAwLTAuMDAtMC4wMC1SUVNULUEtMEI1LUZSRUUGU0VBVC0=
</OfferItemRefID>

<OfferItemRefID>NlgtU0VHMi1QQVgxMS1FVVIItMC4wMC0wLjAwLTAuMDAtUlFTVC1BLTBCNS1GUkVFIFNFQVQt
</OfferItemRefID>
    <RowNumber>9</RowNumber>
    <SeatCharacteristicCode>W</SeatCharacteristicCode>
</Seat>
</SeatRow>
<SeatRow>
    <RowNumber>10</RowNumber>
    <Seat>
        <ColumnID>A</ColumnID>
        <OccupationStatusCode>F</OccupationStatusCode>

<OfferItemRefID>NlgtU0VHMi1QQVgxLUVVUi0wLjAwLTAuMDAtMC4wMC1SUVNULUEtMEI1LUZSRUUGU0VBVC0=
</OfferItemRefID>

<OfferItemRefID>NlgtU0VHMi1QQVgyLUVVUi0wLjAwLTAuMDAtMC4wMC1SUVNULUEtMEI1LUZSRUUGU0VBVC0=
</OfferItemRefID>

<OfferItemRefID>NlgtU0VHMi1QQVgxMS1FVVIItMC4wMC0wLjAwLTAuMDAtUlFTVC1BLTBCNS1GUkVFIFNFQVQt
</OfferItemRefID>
    <RowNumber>10</RowNumber>
    <SeatCharacteristicCode>W</SeatCharacteristicCode>
</Seat>
<Seat>
    <ColumnID>B</ColumnID>
    <OccupationStatusCode>F</OccupationStatusCode>

<OfferItemRefID>NlgtU0VHMi1QQVgxLUVVUi0wLjAwLTAuMDAtMC4wMC1SUVNULUEtMEI1LUZSRUUGU0VBVC0=
</OfferItemRefID>

```

```

<OfferItemRefID>NlgtU0VHMi1QQVgyLUVVUi0wLjAwLTAuMDAtMC4wMC1SUVNULUEtMEI1LUZSRUUgU0VBVC0=
</OfferItemRefID>

<OfferItemRefID>NlgtU0VHMi1QQVgxMS1FVVIItMC4wMC0wLjAwLTAuMDAtUlFTVC1BLTBCNS1GUkVFIFNFQVQt
</OfferItemRefID>
    <RowNumber>10</RowNumber>
    <SeatCharacteristicCode>A</SeatCharacteristicCode>
</Seat>
<Seat>
    <ColumnID>C</ColumnID>
    <OccupationStatusCode>F</OccupationStatusCode>

<OfferItemRefID>NlgtU0VHMi1QQVgyLUVVUi0wLjAwLTAuMDAtMC4wMC1SUVNULUEtMEI1LUZSRUUgU0VBVC0=
</OfferItemRefID>

<OfferItemRefID>NlgtU0VHMi1QQVgyLUVVUi0wLjAwLTAuMDAtMC4wMC1SUVNULUEtMEI1LUZSRUUgU0VBVC0=
</OfferItemRefID>

<OfferItemRefID>NlgtU0VHMi1QQVgxMS1FVVIItMC4wMC0wLjAwLTAuMDAtUlFTVC1BLTBCNS1GUkVFIFNFQVQt
</OfferItemRefID>
    <RowNumber>10</RowNumber>
    <SeatCharacteristicCode>A</SeatCharacteristicCode>
</Seat>
<Seat>
    <ColumnID>D</ColumnID>
    <OccupationStatusCode>F</OccupationStatusCode>

<OfferItemRefID>NlgtU0VHMi1QQVgyLUVVUi0wLjAwLTAuMDAtMC4wMC1SUVNULUEtMEI1LUZSRUUgU0VBVC0=
</OfferItemRefID>

<OfferItemRefID>NlgtU0VHMi1QQVgyLUVVUi0wLjAwLTAuMDAtMC4wMC1SUVNULUEtMEI1LUZSRUUgU0VBVC0=
</OfferItemRefID>

<OfferItemRefID>NlgtU0VHMi1QQVgxMS1FVVIItMC4wMC0wLjAwLTAuMDAtUlFTVC1BLTBCNS1GUkVFIFNFQVQt
</OfferItemRefID>
    <RowNumber>10</RowNumber>
    <SeatCharacteristicCode>W</SeatCharacteristicCode>
</Seat>
</SeatRow>
</CabinCompartment>
<CabinCompartment>
    <CabinType>
        <CabinTypeCode>2</CabinTypeCode>
    </CabinType>
    <DeckCode>Main</DeckCode>
    <FirstRowNumber>11</FirstRowNumber>
    <LastRowNumber>14</LastRowNumber>
    <SeatColumn>
        <ColumnID>A</ColumnID>
    </SeatColumn>
    <SeatColumn>
        <ColumnID>B</ColumnID>

```

```

        </SeatColumn>
        <SeatColumn>
            <ColumnID>C</ColumnID>
        </SeatColumn>
        <SeatColumn>
            <ColumnID>D</ColumnID>
        </SeatColumn>
        <SeatRow>
            <RowNumber>11</RowNumber>
            <Seat>
                <ColumnID>A</ColumnID>
                <OccupationStatusCode>F</OccupationStatusCode>

<OfferItemRefID>NlgtU0VHMi1QQVgxLUVVUi0wLjAwLTAuMDAtMC4wMC1SUVNULUEtMEI1LUZSRUUGU0VBVC0=
</OfferItemRefID>

<OfferItemRefID>NlgtU0VHMi1QQVgyLUVVUi0wLjAwLTAuMDAtMC4wMC1SUVNULUEtMEI1LUZSRUUGU0VBVC0=
</OfferItemRefID>

<OfferItemRefID>NlgtU0VHMi1QQVgxMS1FVVIItMC4wMC0wLjAwLTAuMDAtUlFTVC1BLTBCNS1GUkVFIFNFQVQt
</OfferItemRefID>
            <RowNumber>11</RowNumber>
            <SeatCharacteristicCode>W</SeatCharacteristicCode>
        </Seat>
        <Seat>
            <ColumnID>B</ColumnID>
            <OccupationStatusCode>F</OccupationStatusCode>

<OfferItemRefID>NlgtU0VHMi1QQVgxLUVVUi0wLjAwLTAuMDAtMC4wMC1SUVNULUEtMEI1LUZSRUUGU0VBVC0=
</OfferItemRefID>

<OfferItemRefID>NlgtU0VHMi1QQVgyLUVVUi0wLjAwLTAuMDAtMC4wMC1SUVNULUEtMEI1LUZSRUUGU0VBVC0=
</OfferItemRefID>

<OfferItemRefID>NlgtU0VHMi1QQVgxMS1FVVIItMC4wMC0wLjAwLTAuMDAtUlFTVC1BLTBCNS1GUkVFIFNFQVQt
</OfferItemRefID>
            <RowNumber>11</RowNumber>
            <SeatCharacteristicCode>A</SeatCharacteristicCode>
        </Seat>
        <Seat>
            <ColumnID>C</ColumnID>
            <OccupationStatusCode>F</OccupationStatusCode>

<OfferItemRefID>NlgtU0VHMi1QQVgxLUVVUi0wLjAwLTAuMDAtMC4wMC1SUVNULUEtMEI1LUZSRUUGU0VBVC0=
</OfferItemRefID>

<OfferItemRefID>NlgtU0VHMi1QQVgyLUVVUi0wLjAwLTAuMDAtMC4wMC1SUVNULUEtMEI1LUZSRUUGU0VBVC0=
</OfferItemRefID>

<OfferItemRefID>NlgtU0VHMi1QQVgxMS1FVVIItMC4wMC0wLjAwLTAuMDAtUlFTVC1BLTBCNS1GUkVFIFNFQVQt
</OfferItemRefID>
            <RowNumber>11</RowNumber>
            <SeatCharacteristicCode>A</SeatCharacteristicCode>

```

```

        </Seat>
        <Seat>
            <ColumnID>D</ColumnID>
            <OccupationStatusCode>F</OccupationStatusCode>

<OfferItemRefID>NlgtU0VHMi1QQVgxLUVVUi0wLjAwLTAuMDAtMC4wMC1SUVNULUEtMEI1LUZSRUUgU0VBVC0=
</OfferItemRefID>

<OfferItemRefID>NlgtU0VHMi1QQVgyLUVVUi0wLjAwLTAuMDAtMC4wMC1SUVNULUEtMEI1LUZSRUUgU0VBVC0=
</OfferItemRefID>

<OfferItemRefID>NlgtU0VHMi1QQVgxMS1FVVIItMC4wMC0wLjAwLTAuMDAtUlFTVC1BLTBCNS1GUkVFIFNFQVQt
</OfferItemRefID>
            <RowNumber>11</RowNumber>
            <SeatCharacteristicCode>W</SeatCharacteristicCode>
        </Seat>
    </SeatRow>
    <SeatRow>
        <RowNumber>12</RowNumber>
        <Seat>
            <ColumnID>A</ColumnID>
            <OccupationStatusCode>F</OccupationStatusCode>

<OfferItemRefID>NlgtU0VHMi1QQVgxLUVVUi0wLjAwLTAuMDAtMC4wMC1SUVNULUEtMEI1LUZSRUUgU0VBVC0=
</OfferItemRefID>

<OfferItemRefID>NlgtU0VHMi1QQVgyLUVVUi0wLjAwLTAuMDAtMC4wMC1SUVNULUEtMEI1LUZSRUUgU0VBVC0=
</OfferItemRefID>

<OfferItemRefID>NlgtU0VHMi1QQVgxMS1FVVIItMC4wMC0wLjAwLTAuMDAtUlFTVC1BLTBCNS1GUkVFIFNFQVQt
</OfferItemRefID>
            <RowNumber>12</RowNumber>
            <SeatCharacteristicCode>W</SeatCharacteristicCode>
        </Seat>
    <Seat>
        <ColumnID>B</ColumnID>
        <OccupationStatusCode>F</OccupationStatusCode>

<OfferItemRefID>NlgtU0VHMi1QQVgxLUVVUi0wLjAwLTAuMDAtMC4wMC1SUVNULUEtMEI1LUZSRUUgU0VBVC0=
</OfferItemRefID>

<OfferItemRefID>NlgtU0VHMi1QQVgyLUVVUi0wLjAwLTAuMDAtMC4wMC1SUVNULUEtMEI1LUZSRUUgU0VBVC0=
</OfferItemRefID>

<OfferItemRefID>NlgtU0VHMi1QQVgxMS1FVVIItMC4wMC0wLjAwLTAuMDAtUlFTVC1BLTBCNS1GUkVFIFNFQVQt
</OfferItemRefID>
            <RowNumber>12</RowNumber>
            <SeatCharacteristicCode>A</SeatCharacteristicCode>
        </Seat>
    <Seat>
        <ColumnID>C</ColumnID>
        <OccupationStatusCode>F</OccupationStatusCode>

```

```

<OfferItemRefID>NlgtU0VHMi1QQVgxLUVVUi0wLjAwLTAuMDAtMC4wMC1SUVNULUEtMEI1LUZSRUUGU0VBVC0=
</OfferItemRefID>

<OfferItemRefID>NlgtU0VHMi1QQVgyLUVVUi0wLjAwLTAuMDAtMC4wMC1SUVNULUEtMEI1LUZSRUUGU0VBVC0=
</OfferItemRefID>

<OfferItemRefID>NlgtU0VHMi1QQVgxMS1FVVIItMC4wMC0wLjAwLTAuMDAtUlFTVC1BLTBCNS1GUkVFIFNFQVQt
</OfferItemRefID>
    <RowNumber>12</RowNumber>
    <SeatCharacteristicCode>A</SeatCharacteristicCode>
</Seat>
<Seat>
    <ColumnID>D</ColumnID>
    <OccupationStatusCode>F</OccupationStatusCode>

<OfferItemRefID>NlgtU0VHMi1QQVgxLUVVUi0wLjAwLTAuMDAtMC4wMC1SUVNULUEtMEI1LUZSRUUGU0VBVC0=
</OfferItemRefID>

<OfferItemRefID>NlgtU0VHMi1QQVgyLUVVUi0wLjAwLTAuMDAtMC4wMC1SUVNULUEtMEI1LUZSRUUGU0VBVC0=
</OfferItemRefID>

<OfferItemRefID>NlgtU0VHMi1QQVgxMS1FVVIItMC4wMC0wLjAwLTAuMDAtUlFTVC1BLTBCNS1GUkVFIFNFQVQt
</OfferItemRefID>
    <RowNumber>12</RowNumber>
    <SeatCharacteristicCode>W</SeatCharacteristicCode>
</Seat>
</SeatRow>
<SeatRow>
    <RowNumber>14</RowNumber>
    <Seat>
        <ColumnID>A</ColumnID>
        <OccupationStatusCode>F</OccupationStatusCode>

<OfferItemRefID>NlgtU0VHMi1QQVgxLUVVUi0wLjAwLTAuMDAtMC4wMC1SUVNULUEtMEI1LUZSRUUGU0VBVC0=
</OfferItemRefID>

<OfferItemRefID>NlgtU0VHMi1QQVgyLUVVUi0wLjAwLTAuMDAtMC4wMC1SUVNULUEtMEI1LUZSRUUGU0VBVC0=
</OfferItemRefID>

<OfferItemRefID>NlgtU0VHMi1QQVgxMS1FVVIItMC4wMC0wLjAwLTAuMDAtUlFTVC1BLTBCNS1GUkVFIFNFQVQt
</OfferItemRefID>
    <RowNumber>14</RowNumber>
    <SeatCharacteristicCode>W</SeatCharacteristicCode>
</Seat>
<Seat>
    <ColumnID>B</ColumnID>
    <OccupationStatusCode>F</OccupationStatusCode>

<OfferItemRefID>NlgtU0VHMi1QQVgxLUVVUi0wLjAwLTAuMDAtMC4wMC1SUVNULUEtMEI1LUZSRUUGU0VBVC0=
</OfferItemRefID>

```

```

<OfferItemRefID>NlgtU0VHMi1QQVgyLUVVUi0wLjAwLTAuMDAtMC4wMC1SUVNULUEtMEI1LUZSRUUGU0VBVC0=
</OfferItemRefID>

<OfferItemRefID>NlgtU0VHMi1QQVgxMS1FVVIItMC4wMC0wLjAwLTAuMDAtUlFTVC1BLTBCNS1GUkVFIFNFQVQt
</OfferItemRefID>
    <RowNumber>14</RowNumber>
    <SeatCharacteristicCode>A</SeatCharacteristicCode>
</Seat>
<Seat>
    <ColumnID>C</ColumnID>
    <OccupationStatusCode>F</OccupationStatusCode>

<OfferItemRefID>NlgtU0VHMi1QQVgyLUVVUi0wLjAwLTAuMDAtMC4wMC1SUVNULUEtMEI1LUZSRUUGU0VBVC0=
</OfferItemRefID>

<OfferItemRefID>NlgtU0VHMi1QQVgyLUVVUi0wLjAwLTAuMDAtMC4wMC1SUVNULUEtMEI1LUZSRUUGU0VBVC0=
</OfferItemRefID>

<OfferItemRefID>NlgtU0VHMi1QQVgxMS1FVVIItMC4wMC0wLjAwLTAuMDAtUlFTVC1BLTBCNS1GUkVFIFNFQVQt
</OfferItemRefID>
    <RowNumber>14</RowNumber>
    <SeatCharacteristicCode>A</SeatCharacteristicCode>
</Seat>
<Seat>
    <ColumnID>D</ColumnID>
    <OccupationStatusCode>F</OccupationStatusCode>

<OfferItemRefID>NlgtU0VHMi1QQVgyLUVVUi0wLjAwLTAuMDAtMC4wMC1SUVNULUEtMEI1LUZSRUUGU0VBVC0=
</OfferItemRefID>

<OfferItemRefID>NlgtU0VHMi1QQVgyLUVVUi0wLjAwLTAuMDAtMC4wMC1SUVNULUEtMEI1LUZSRUUGU0VBVC0=
</OfferItemRefID>

<OfferItemRefID>NlgtU0VHMi1QQVgxMS1FVVIItMC4wMC0wLjAwLTAuMDAtUlFTVC1BLTBCNS1GUkVFIFNFQVQt
</OfferItemRefID>
    <RowNumber>14</RowNumber>
    <SeatCharacteristicCode>W</SeatCharacteristicCode>
</Seat>
</SeatRow>
</CabinCompartment>
<PaxSegmentRefID>SEG2</PaxSegmentRefID>
</SeatMap>
</Response>
<PayloadAttributes>
    <CorrelationID>7AS8PDP8ZBMH1VGM#TQSLYG#91</CorrelationID>
    <VersionNumber>21.3</VersionNumber>
</PayloadAttributes>
</IATA_SeatAvailabilityRS>

```

Table 35 SeatAvailabilityRS

# Glossary

**CC** - Credit Card

**FF** - Frequent Flyer

**FOP** - Form Of Payment

**FOID** - Form Of Identification

**FQTV** - Frequent flyer code for accruing miles

**MCO** - Miscellaneous Charge Order

**PNR** - Passenger Name Record

**PTC** - Passenger Type Code

**TST** - Transitional Stored Ticket

**RFIC** - Reason For Issuance Code

**RFISC** - Reason for Issuance Sub-Code

**SSR** - Special Service Request

**SVC** - Manual Auxiliary Segment

**TSM** - Transitional Stored MCO

**OWD** - One Way Display

## Legal disclaimer

This document, including all information contained herein and any attached or related documents, is strictly confidential and proprietary information of Amadeus and its respective affiliates, subsidiaries, members, vendors and/or suppliers (the “Confidential Information”) and is being shared with you for the sole and exclusive purpose of providing a functional solution overview between the airline and NDC consumer as part of Amadeus Altéa NDC. This document is intended solely for information purposes. If you are not the intended recipient you are notified that disclosing, copying or distributing the contents of this document or information is strictly prohibited. Any Amadeus intellectual property or other information contained in this document or relating to the solutions, any products or services described herein shall remain the sole and exclusive property of Amadeus or its licensees, as applicable. Nothing herein shall constitute a license, transfer or other grant of any rights in or to the information or intellectual property contained or referenced herein. Any solutions, products, services or company names that may be referred to in this presentation that are trademarks are herewith acknowledged. Any disputes in connection with the breach of the above provisions shall be governed by and construed in accordance with English law and is submitted to the exclusive jurisdiction of the courts of London. Any content within this document is subject to an agreement being entered into between the parties and will not be considered as binding until agreed and formalised by the parties under a definitive agreement.