

# ServiceList 21.3 Implementation guide

# Table of Contents

- Overview ..... 4
  - Description..... 4
  - In scope..... 4
  - Out of scope ..... 4
- Send a Request: ServiceListRQ ..... 5
  - Pre-requisites ..... 5
  - Common Implementation ..... 5
    - Distribution Chain..... 5
    - Payload Attributes..... 8
    - POS..... 9
  - Prime booking flow ..... 9
    - Pax..... 10
    - Response Parameters ..... 11
    - ServiceListCoreRequest..... 12
  - Post Sale Flow..... 14
    - Pax..... 15
    - ServiceListCoreRequest..... 15
- Receiving a Reply: ServiceListRS ..... 18
  - Version ..... 18
  - Services Offers..... 18
  - Pack of services ..... 23
  - DataLists..... 26
    - BaggageAllowance ..... 26
    - DatedMarketingSegmentList ..... 29
    - DatedOperatingSegmentList ..... 31
    - PaxJourneyList ..... 33

- PaxList ..... 34
- PaxSegmentList ..... 35
- ServiceDefinitionList..... 36
- Errors and Warnings ..... 41
  - Errors ..... 41
  - Non-exhaustive list of errors supported ..... 41
  - Warnings..... 46
- Examples..... 48
  - Use Case 1 - Prime booking flow, Catalog requested for the Offer full content..... 48
  - Use Case 2 - Prime booking flow - Catalog requested for a selection of passengers and a selection of segment..... 55
  - Use Case 3 - Prime booking flow, Catalog for multipax services ..... 59
  - Use Case 4 - Prime booking flow, Catalog for pack of services and booking instructions ..... 65
  - Use Case 5 - Post-sale flow, ServiceList from Order for MultiLeg ..... 74
  - Use Case 6 - Post-sale flow, Catalog requested from the OrderID for the PNR full content..... 81
- Reference..... 89
  - List of Standard Services ..... 89
- Glossary ..... 92
- Legal disclaimer ..... 93

# Overview

## Description

The ServiceListRQ API allows the user to retrieve the flight-related catalogue of ancillary services (chargeable and free) per passenger, either during the prime booking flow or after the order creation (post-sale flow).

## In scope

The verb supports a catalog request from:

- An air offer (prime booking flow).
- An order (post-sale flow).

Are considered in the scope of the current release:

- Pack of services.
- Currency override.
- AAS Price Adjustment.
- Display free standard services.
- AAM catalogue filtering.

## Out of scope

The following features are not supported:

- For services with quota: the quota is checked (service is not returned if not available anymore) but service availability is not returned in ServiceListRS.
- FQTV and CLID can't be used in the serviceList input. If present in the offer (or in the order for the post-booking flow), they get applied automatically during the ServiceList process.
- AAS Promo codes can't be used.
- Time to think services are not supported in Altéa NDC.
- Services type C (extra baggage charges), and M (standalone services).

# Send a Request: ServiceListRQ

## Pre-requisites

The airline for which the catalogue of services is requested is AAAS user.

## Common Implementation

This section describes the implementation of the input message based on the NDC schema version 21.3.

### Distribution Chain

The distribution chain data must be provided in any input request of the services described above:

Designation	Repetition	Status	Location	Comments
<b>Distribution Chain Link</b>	<b>1...N</b>	<b>M</b>	<b>.../DistributionChain/DistributionChainLink</b>	<b>Defines an organization playing a participating role in an instance of a distribution channel.</b>  <u>NB: No more than 3 entities can be considered - a single seller / a single distributor / a single carrier.</u>
Ordinal	1	M	/Ordinal	Position of the organization in the distribution chain. This number indicates the order in which the organization participated. Position starts with "1" following ascending order from the seller to the carrier.
Organization Role	1	M	/OrgRole	Role of the organization participating in the distribution chain defined as follow: <ul style="list-style-type: none"> <li>• Seller - end buyer facing.</li> <li>• Distributor - an intermediary.</li> <li>• Carrier - the responsible supplier.</li> </ul>

Designation	Repetition	Status	Location	Comments
<b>Contact Info</b>	<b>0...1</b>	<b>O</b>	<b>.../DistributionChain/DistributionChainLink/ContactInfo</b>	<b>The electronic or geographic address provided by an organization as the contact channel</b>
Contact Info ID	1	M	/ContactInfoID	Organization's contact unique Identifier acting as a reference.
Contact Purpose Text	0...1	O	/ContactPurposeText	Fixed value: "STANDARD".
<b>Email</b>	<b>0...1</b>	<b>O</b>	<b>/EmailAddress</b>	
Email Address	1	M	/EmailAddress/EmailAddressText	The seller's email address used for contact purposes. NB: Only used at OrderCreateRQ.
<b>Phone</b>	<b>0...1</b>	<b>O</b>	<b>/Phone</b>	
Type of contact	0...1	O	/Phone/ContactTypeText	Fixed value: "Mobile". NB: Only used at OrderCreateRQ.
Phone number	0...1	O	/Phone/PhoneNumber	The seller's phone number used for contact purposes. Example: +33677876543
<b>Participating Organization</b>	<b>1</b>	<b>M</b>	<b>.../DistributionChain/DistributionChainLink/ParticipatingOrg</b>	<b>Organized structure representing the participants.</b>
Organization Name	0...1	O	/Name	Name of the organization.
Organization ID	1	M	/OrgID	Organization code or identifier. Possible values: <ul style="list-style-type: none"> <li>for Seller: IATA Number, TIDs (Travel Industry Designator Service), AgencyID.</li> <li>for Distributor: Unique alphanumeric identifier (3 characters maximum).</li> <li>for Carrier: Airline Code (2 alphanumeric identifier).</li> </ul> AgencyID shall be used when partner has no IATA Number nor TIDS and it must be an 8-digit

Designation	Repetition	Status	Location	Comments
				numeric code to be reported to the revenue accounting.
<b>Sales Branch</b>	<b>0...1</b>	<b>O</b>	<b>.../DistributionChain/DistributionChainLink/SalesBranch</b>	
Sales Branch ID	1	M	/SalesBranch/SalesBranchID	The industry-wide unique identifier of the sales branch. Commonly, Pseudo City Code may be used or a bilaterally agreed code.

```

<DistributionChain>
  <DistributionChainLink>
    <ContactInfo>
      <ContactInfoID>123456</ContactInfoID>
      <EmailAddress>
        <EmailAddressText>TEST@AMADEUS.COM</EmailAddressText>
      </EmailAddress>
      <Phone>
        <PhoneNumber>+33493101010</PhoneNumber>
      </Phone>
    </ContactInfo>
    <Ordinal>1</Ordinal>
    <OrgRole>Seller</OrgRole>
    <ParticipatingOrg>
      <OrgID>12345678</OrgID>
    </ParticipatingOrg>
    <SalesBranch>
      <SalesBranchID>NCE6X01AB</SalesBranchID>
    </SalesBranch>
  </DistributionChainLink>
  <DistributionChainLink>
    <Ordinal>2</Ordinal>
    <OrgRole>Distributor</OrgRole>
    <ParticipatingOrg>
      <OrgID>1A</OrgID>
    </ParticipatingOrg>
  </DistributionChainLink>
  <DistributionChainLink>
    <Ordinal>3</Ordinal>
    <OrgRole>Carrier</OrgRole>
    <ParticipatingOrg>
      <OrgID>6X</OrgID>
    </ParticipatingOrg>
  </DistributionChainLink>
</DistributionChain>

```

Table 1 Example of DistributionChain

## Payload Attributes

IATA payload standard attributes.

Designation	Repetition	Status	Location	Comments
Message version	0...1	O	.../PayloadAttributes/VersionNumber	The IATA NDC schema we comply with - the version of the message is indicated by a decimal value.



```
<PayloadAttributes>
  <VersionNumber>21.3</VersionNumber>
</PayloadAttributes>
```

Table 2: Payload Attributes

## POS

The Point of Sale is the information identifying the location and other attributes of the entity performing transactions.

Designation	Repetition	Status	Location	Comments
Country Code	1	M*	.../POS/Country/CountryCode	Country code following ISO 3166 with 2 alpha country code. Examples: FR, US.  <i>*Mandatory field for configuration purpose (Agency handling, Reporting, ...).</i>

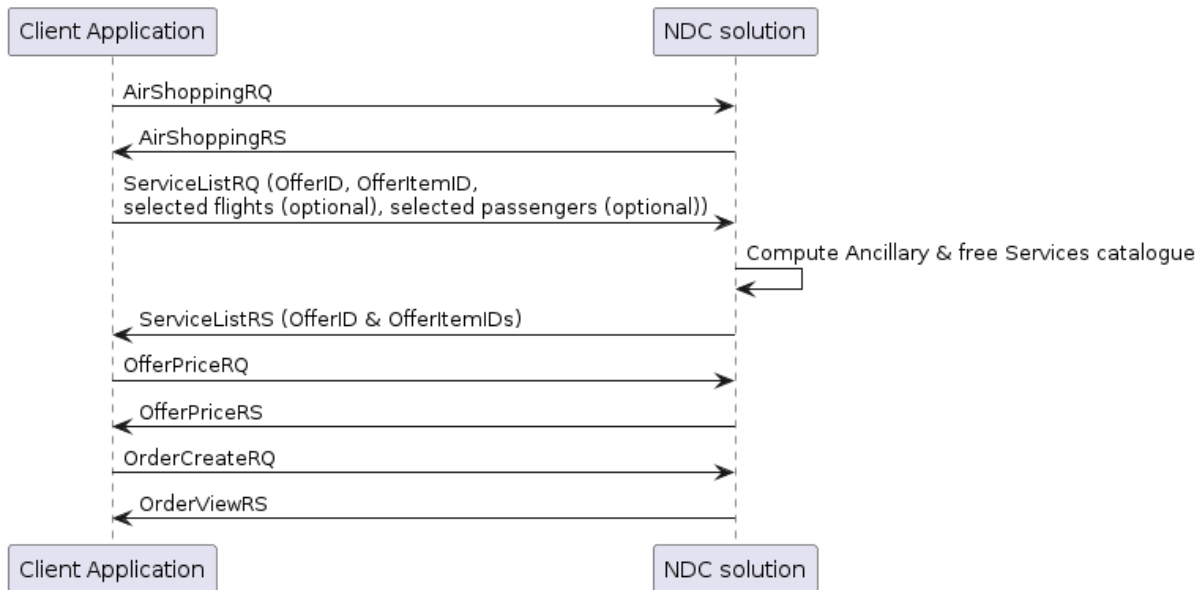
```
<POS>
  <Country>
    <CountryCode>FR</CountryCode>
  </Country>
</POS>
```

Table 3 Example of POS

## Prime booking flow

This flow starts with a successful AirShoppingRQ/RS (and potentially a OfferPriceRQ/RS) followed by a ServiceListRQ wich takes in input one of the OfferIDs (and the mandatory OfferItemID containing the flights) returned in AirShoppingRS.

## ServiceList in prime booking flow



### Pax

This section contains the Traveler information. It is not needed if the catalogue is requested for all the passengers present in the offer.

Up to 9 travelers occupying a seat and 9 infants in lap can be defined.

Frequent Traveler information is taken from the offer, any frequent flyer information sent in input will be ignored.

Designation	Repetition	Status	Location	Comments
<b>Pax section</b>			<b>IATA_ServiceListRQ/Request/Pax</b>	
PaxID	1	M	/Pax/PaxID	Unique passenger ID. Ex: PAX1, PAX2, etc...
PaxRefID	1	O	/Pax/PaxRefID	Passenger reference ID. Used to link infant to an adult.
PTC	1	O	/Pax/PTC	Describes the type of the passenger. Examples : ADT, CHD, INF. If present in the query, it must match, for each passenger ID, the PTC previously returned in <i>AirShoppingRS</i> .

Example: Adult Passenger (ADT) travelling with an infant (INF).

```

<Pax>
  <PaxID>PAX1</PaxID>
  <PTC>ADT</PTC>
</Pax>
<Pax>
  <PaxID>PAX11</PaxID>
  <PaxRefID>PAX1</PaxRefID>
  <PTC>INF</PTC>
</Pax>

```

Table 4 Example of Pax

Note: it is not possible to request a catalogue of services for an infant only. If "Travelers" element contains only one passenger whose PTC is INF, ServiceListRS will return the catalogue of services for both the infant and the adult to whom he is associated.

## Response Parameters

### Currency Override

This allows the requester to override the default currency defined for the Point of Sale (POS). This currency related parameter intends to influence in which currency the responses are displayed.

If requester would like to override the currency for the full flow, the "CurCode" must be added in input of all impacted verbs.

Designation	Repetition	Status	Location	Comments
<b>Currency Parameters</b>	<b>0...N</b>	<b>O</b>	<b>.../Request/ResponseParameters/CurParameter</b>	
Currency	1	M	/CurCode	Currency code to be applied - 3 letters code as per ISO 4217 (Example: USD, EUR, ...)

```

<ResponseParameters>
  <CurParameter>
    <CurCode>USD</CurCode>
  </CurParameter>
</ResponseParameters>

```

Table 5 Currency Override

Note: the currency used for the override must be defined at POS configuration.

## Language Option

As part of static file capability, the requester has the possibility to request some airline's information such as fare family benefits, disclaimer, ... in the chosen language. Language(s) to be supported must be properly defined in static file otherwise default is English.

If requester would like to have all responses in the chosen language, the "LangCode" must be added in input of all impacted verbs.

NB: Choice of language is not available in input of OrderChangeRQ due to IATA schema limitation, thus response is always in English.

Designation	Repetition	Status	Location	Comments
<b>Language parameters</b>	<b>0...N</b>	<b>O</b>	<b>.../Request/ResponseParameters/LangUsage</b>	
LangCode	1	M	/LangCode	The two letters ISO language code (Example: FR, EN,...). By default, the language is English.

```

<ResponseParameters>
  <LangUsage>
    <LangCode>EN</LangCode>
  </LangUsage>
</ResponseParameters>

```

Table 6 Language option

## ServiceListCoreRequest

This section contains the ServiceList query parameters.

In prime booking flow, the OfferID and OfferItemID are given in input.

At least one OfferItemID is mandatory in the XSD.

Designation	Repetition	Status	Location	Comments
<b>Offer Request section</b>			<b>IATA_ServiceListRQ/Request/ServiceListCoreRequest/OfferRequest</b>	
OfferRequest	1	M	/OfferRequest	Indicates that the request is using offers.
Offer	1	M	/OfferRequest/Offer	The offer that is concerned by the request.
OfferID	1	M	/OfferRequest/Offer/OfferID	The unique ID of the offer on which the catalogue will be based.

Designation	Repetition	Status	Location	Comments
OfferItem	1...N	O	/OfferRequest/Offer/OfferItem	Specific item of the offer.
PaxRefID	1...N	O	/OfferRequest/Offer/OfferItem/PaxRefID	Reference to a Passenger ID from a previously returned Offer.
PaxSegmentRefID	0...N	O	/OfferRequest/Offer/OfferItem/PaxSegmentRefID	Segment(s) on which the service list is requested.
OwnerCode	1	M	/OfferRequest/Offer/OwnerCode	Airline code assigned to a carrier.
OfferItemID	1...N	M	/OfferRequest/Offer/OfferItem/OfferItemID	Carrier assigned ID which exists uniquely within an Offer.
Service	1...N	M	/OfferRequest/Offer/OfferItem/Service	Instance of a specific flight or Service Definition as it has been offered in the context of a specific Offer.
ServiceID	1	M	/OfferRequest/Offer/OfferItem/Service/ServiceID	Uniquely identifies a Service within the context of one message.

```

<ServiceListCoreRequest>
  <OfferRequest>
    <Offer>
      <OfferID>6fxhabfue8Yjugauchs f</OfferID>
      <OfferItem>
        <OfferItemID>Nm6FEHFBjg7sdbfmd</OfferItemID>
        <PaxRefID>PAX1</PaxRefID>
        <PaxRefID>PAX2</PaxRefID>
        <PaxSegmentRefID>SEG16</PaxSegmentRefID>
        <Service>
          <ServiceID>1</ServiceID>
        </Service>
      </OfferItem>
      <OwnerCode>6X</OwnerCode>
    </Offer>
  </OfferRequest>
</ServiceListCoreRequest>

```

Table 7 Example of request of a list of services with selection of passenger(s) and segment(s)

```

<ServiceListCoreRequest>
  <OfferRequest>
    <Offer>
      <OfferID>B65rfwhdgashfjsehUTudjzd</OfferID>
      <OfferItem>
        <OfferItemID>Uice7sfqsejbfjds</OfferItemID>
        <Service>
          <ServiceID>1</ServiceID>
        </Service>
      </OfferItem>
      <OwnerCode>6X</OwnerCode>
    </Offer>
  </OfferRequest>
</ServiceListCoreRequest>

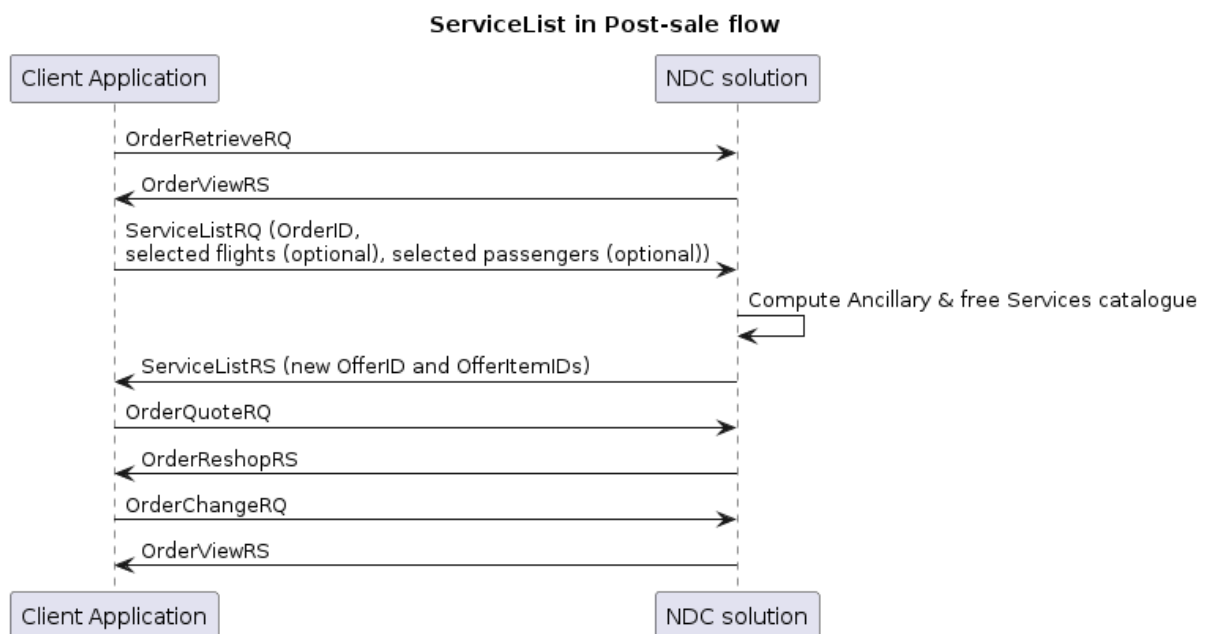
```

Table 8 Example of request of a list of services without any passenger(s) or segment(s) selection

## Post Sale Flow

This flow starts after the order creation, in this case the ServiceListRQ takes in input the OrderID.

An OrderRetrieveRQ is needed before the ServiceListRQ/RS.



**Note :** If no passenger or flight is specified in the query, the catalog will be based on the full Order content.

## Pax

This section contains the Traveler information. It is not needed if the catalogue is requested for all the passengers present in the order.

Up to 9 travellers occupying a seat and 9 infants in lap can be defined.

Frequent Traveler information is taken from the order, any frequent flyer information sent in input will be ignored.

Designation	Repetition	Status	Location	Comments
<b>Pax section</b>			<b>IATA_ServiceListRQ/Request/Pax</b>	
PaxID	1	M	/Pax/PaxID	Unique passenger ID. Ex: PAX1, PAX2, etc...
PaxRefID	1	O	/Pax/PaxRefID	Passenger reference ID. Used to link infant to an adult.
PTC	1	O	/Pax/PTC	Describes the type of the passenger. Examples : ADT, CHD, INF. If present in the query, it must match, for each passenger ID, the PTC previously returned in the order.

Note: it is not possible to request a catalogue of services for an infant only. If "Travelers" element contains only one passenger whose PTC is INF, ServiceListRS will return the catalogue of services for both the infant and the adult to whom he is associated.

## ServiceListCoreRequest

This section contains the ServiceList query parameters. In post sale flow, It is based on the order information.

Designation	Repetition	Status	Location	Comments
<b>Order Request section</b>			<b>IATA_ServiceListRQ/Request/ServiceListCoreRequest/OrderRequest</b>	
OrderRequest	1	M	/OrderRequest	Indicates that the request is using orders.
Order	1	M	/OrderRequest/Order	The order that is concerned by the request.

Designation	Repetition	Status	Location	Comments
OrderID	1	M	/OrderRequest/Order/OrderID	The unique ID of the order on which the catalogue will be based.
OrderItem	0...N	O	/OrderRequest/Order/OrderItem	OrderItem(s) on which the service list is requested.
OrderItemID	1	M	/OrderRequest/Order/OrderItem/OrderItemID	The unique ID of the order item on which the catalogue will be based.
OwnerCode	1	M	/OrderRequest/Order/OrderItem/OwnerCode	Airline code assigned to a carrier.
PaxRefID	0...N	O	/OrderRequest/Order/OrderItem/PaxRefID	Passenger(s) for whom the service list is requested.
PaxSegmentRefID	0...N	O	/OrderRequest/Order/OrderItem/PaxSegmentRefID	Segment(s) on which the service list is requested.
OwnerCode	1	M	/OrderRequest/Order/OwnerCode	Airline code assigned to a carrier.

```

<Request>
  <ServiceListCoreRequest>
    <OrderRequest>
      <Order>
        <OrderID>6X172ABDCE100</OrderID>
        <OwnerCode>6X</OwnerCode>
      </Order>
    </OrderRequest>
  </ServiceListCoreRequest>
</Request>

```

Table 9 Example with an OrderID



```

<Request>
  <ServiceListCoreRequest>
    <OrderRequest>
      <Order>
        <OrderID>6X1726JVHRQ00</OrderID>
        <OrderItem>
          <OrderItemID>6X1726JVHRQ00_AIR-1</OrderItemID>
          <OwnerCode>6X</OwnerCode>
          <PaxRefID>PAX2</PaxRefID>
          <PaxSegmentRefID>SEG1</PaxSegmentRefID>
        </OrderItem>
        <OwnerCode>6X</OwnerCode>
      </Order>
    </OrderRequest>
  </ServiceListCoreRequest>
</Request>

```

Table 10 Example with a passenger selection

# Receiving a Reply: ServiceListRS

## Version

This section describes the IATA payload standard attributes providing some ID that identified a transaction as well as the IATA NDC version used.

Designation	Repetition	Status	Location	Comments
Correlation ID	0...1	O	.../PayloadAttributes/CorrelationID	A unique alphanumeric ID to identify the transaction.  Mandatory for end-to-end correlation of log messages with the corresponding Web service message transaction.
Message version	0...1	O	.../PayloadAttributes/VersionNumber	Specify the NDC Schema Version to which the message conforms.  For all IATA versioned messages, the version of the message is indicated by a decimal value.

```
<PayloadAttributes>
  <CorrelationID>0123456789#ABCD</CorrelationID>
  <VersionNumber>21.3</VersionNumber>
</PayloadAttributes>
```

Table 11 Version

## Services Offers

List of data returned for each service.

Designation	Repetition	Status	Location	Comments
ALaCarteOffer section			<b>IATA_ServiceListRS/Response/ALaCarteOffer</b>	
OfferID	1	M	ALaCarteOffer/OfferID	Unique offer ID. Example: Sulp-3580145741757623292-1.

Designation	Repetition	Status	Location	Comments
OwnerCode	1	M	ALaCarteOffer/OwnerCode	Airline code assigned to a carrier.
OfferItem	1...N	M	ALaCarteOffer/OfferItem	A priced grouping of one or more services within an Offer.
OfferItemID	1	M	/ALaCarteOffer/OfferItem/OfferItemID	Unique offer item ID. Example: SULP-3580145741757623292-1-1.
<b>Eligibility</b>	<b>1</b>	<b>M</b>	<b>/ALaCarteOffer/OfferItem/Eligibility</b>	<b>Refers to the Passengers, Price class or segments for which this offer item is eligible.</b>
PaxJourneyRefID	1	O	/Eligibility/FlightAssociations/PaxJourneyRef/PaxJourneyRefID	Reference to the journeys which this Offer item can be provided. Filled when more than one segment is referred.
PaxSegmentRefID	1	O	/Eligibility/OfferFlightAssociations/PaxSegmentReferences/PaxSegmentRefID	Reference to the flight segments on which this Offer item can be provided. Filled when only one segment is referred.
PaxRefID	1...N	O	/Eligibility/PaxRefID	Reference to the passenger who are eligible for this Offer item.
<b>Service</b>	<b>1</b>	<b>M</b>	<b>/ALaCarteOffer/OfferItem/Service</b>	<b>Section used to describe the service.</b>
Service Definition Ref ID	1	M	/Service/ServiceDefinitionRefID	Reference to a Service Definition ID.
Service ID	1	M	/Service/ServiceID	Service Item ID. Always with value 1.
<b>UnitPrice</b>	<b>1</b>	<b>M</b>	<b>/ALaCarteOffer/OfferItem/UnitPrice</b>	<b>Details of the amount expected for the OrderItem.</b>
Base Amount	1	O	/UnitPrice/BaseAmount	Base Amount excluding taxes, fees, and surcharges.
Base Amount - Currency Code	1	O	/UnitPrice/BaseAmount/@CurCode	Currency code for base amount.

Designation	Repetition	Status	Location	Comments
Discount	1	0	/UnitPrice/Discount	Section used to describe discount.
Pre Discounted Amount	1	0	/UnitPrice/Discount/Pre DiscountedAmount	Service amount before discount applied.
Pre Discounted - Currency Code	1	0	/UnitPrice/Discount/Pre DiscountedAmount@Cur Code	Currency code for discount applied.
Equiv Amount	1	0	/UnitPrice/EquivAmount	The entire amount of the transaction stated in the local currency at the point of sale, or the currency as defined by the @CurCode.
Equiv Amount - Currency Code	1	0	/UnitPrice/EquivAmount/@CurCode	Currency code for equiv amount.
Tax summary	1	0	/UnitPrice/TaxSummary	Tax summary information.
Tax breakdown	1...N	0	/UnitPrice/TaxSummary/Tax	Repetition is unique inside each Tax parent element.
Tax Amount	1	0	/UnitPrice/TaxSummary/Tax/Amount	Tax amount.
Total tax amount	1	0	/UnitPrice/TaxSummary/TotalTaxAmount	Total of all applicable tax amounts included in the price.
Tax summary - Currency Code	1	0	/UnitPrice/TaxSummary/TotalTaxAmount@CurCode	Currency code for total tax amount.
Total Amount	1	0	/UnitPrice/TotalAmount	Total monetary price amount (including all taxes, surcharge and fee amounts if any).  In case of Free Standard services, Total Amount is set to 0 with currency and the appropriate number of decimals.
Total Amount - Currency Code	1	0	/UnitPrice/TotalAmount/@CurCode	Currency code for the total amount, including all tax, surcharge and fee amounts.
<b>Rich Media</b>	<b>1...N</b>	<b>0</b>	<b>/ALaCarteOffer/Rich Media</b>	<b>An external resource such as an Image, Video,</b>

Designation	Repetition	Status	Location	Comments
				<b>PDF or other which is available for display.</b>
Resource URI	1	M	/RichMedia/ResourceURI	URL of the resource.

```

<ALaCarteOffer>
  <OfferID>N7xagefjsefjhdg_7cehtsfjdjcdn</OfferID>
  <OfferItem>
    <Eligibility>
      <OfferFlightAssociations>
        <PaxSegmentReferences>
          <PaxSegmentRefID>SEG3</PaxSegmentRefID>
          <PaxSegmentRefID>SEG28</PaxSegmentRefID>
        </PaxSegmentReferences>
      </OfferFlightAssociations>
      <PaxRefID>PAX1</PaxRefID>
    </Eligibility>
    <OfferItemID>78sHEJSHFMnfdrusdhfd</OfferItemID>
    <Service>
      <ServiceDefinitionRefID>SRV1</ServiceDefinitionRefID>
      ServiceID>1</ServiceID>
    </Service>
    <UnitPrice>
      <BaseAmount CurCode="EUR">11.40</BaseAmount>
      <Discount>
        <DescText>6XDGENBSDTEB</DescText>
        <PreDiscountedAmount CurCode="EUR">15.22</PreDiscountedAmount>
      </Discount>
      <TaxSummary>
        <TotalTaxAmount CurCode="EUR">0.00</TotalTaxAmount>
      </TaxSummary>
      <TotalAmount CurCode="EUR">11.40</TotalAmount>
    </UnitPrice>
  </OfferItem>
  <OwnerCode>6X</OwnerCode>
  <RichMedia>
    <WebAddressURI>http://www.airline.com/images/baggage.jpg</WebAddressURI>
  </RichMedia>
</ALaCarteOffer>

.....

<ServiceDefinitionList>
  <ServiceDefinition>
    <BookingInstructions>
      <MethodText>TTL\s?%WVAL%KG</MethodText>
      <OSI_Text>WVAL</OSI_Text>
      <OSI_Text>[0-9]{1,3}</OSI_Text>
      <SpecialService>
        <Qty>1</Qty>
      </SpecialService>
    </BookingInstructions>
    <Desc>
      <DescText>F</DescText>
      <MarkupStyleText>Service_Type</MarkupStyleText>
    </Desc>
  </ServiceDefinition>
</ServiceDefinitionList>

```

```

    <DescText>01</DescText>
    <MarkupStyleText>BKM</MarkupStyleText>
  </Desc>
  <Desc>
    <DescText>BG</DescText>
    <MarkupStyleText>Group</MarkupStyleText>
  </Desc>
  <Desc>
    <DescText>Chargeable</DescText>
  </Desc>
  <Name>ONE KILOGRAM BAGGAGE</Name>
  <OwnerCode>6X</OwnerCode>
  <ServiceCode>XBAG</ServiceCode>
  <ServiceDefinitionAssociation>
    <BaggageAllowanceRef>
      <BaggageAllowanceRefID>CBA1</BaggageAllowanceRefID>
    </BaggageAllowanceRef>
  </ServiceDefinitionAssociation>
  <ServiceDefinitionID>SRV1</ServiceDefinitionID>
</ServiceDefinition>
</ServiceDefinitionList>

```

Table 12 Example of AlacarteOffer

## Pack of services

The service definition of pack of services contains a reference to the subservices.

Designation	Repetition	Status	Location	Comments
<b>Service Definition section</b>			<b>IATA_ServiceListRS/Response/DataLists/ServiceDefinitionList/ServiceDefinition</b>	
Service Definition Association	1	O	/ServiceDefinition/ServiceDefinitionAssociation	Choice to determine if the information of this Service Definition needs to be extended with specific Bag or Seat characteristics or whether the ServiceDefinition is used as a bundle of further ServiceDefinitions.
Service Bundle	1	M	/ServiceDefinition/ServiceDefinitionAssociation/ServiceBundle	Reference to the sub-services of the pack.
Maximum Service Quantity	1	O	/ServiceDefinition/ServiceDefinitionAssociation/ServiceBundle/MaximumServiceQty	Reference to the number of sub-services of the pack.

Designation	Repetition	Status	Location	Comments
Service Definition Reference ID	1...N	M	/ServiceDefinition/ServiceDefinitionAssociation/ServiceBundle/ServiceDefinitionRefID	Reference to further Service Definition which form part of this Service Bundle.

**Notes :**

- A sub-service included in a pack will be returned in ServiceListRS with anServiceDefinitionID SRVx\_y, SRVx being the ServiceDefinitionID of the service PACK.
- A sub-service of a pack cannot be booked by itself. No "ALaCarteOffer" element refers to these.



```

<ServiceDefinition>
  <BookingInstructions>
    <SpecialService>
      <Qty>1</Qty>
    </SpecialService>
  </BookingInstructions>
  <Desc>
    <DescText>F</DescText>
    <MarkupStyleText>Service_Type</MarkupStyleText>
  </Desc>
  <Desc>
    <DescText>01</DescText>
    <MarkupStyleText>BKM</MarkupStyleText>
  </Desc>
  <Desc>
    <DescText>TS</DescText>
    <MarkupStyleText>Group</MarkupStyleText>
  </Desc>
  <Desc>
    <DescText>Chargeable</DescText>
  </Desc>
  <Name>FAST TRACK BUNDLE</Name>
  <OwnerCode>6X</OwnerCode>
  <RFIC>D</RFIC>
  <RFISC>PSP</RFISC>
  <ServiceCode>PKSP</ServiceCode>
  <ServiceDefinitionAssociation>
    <ServiceBundle>
      <MaximumServiceQty>3</MaximumServiceQty>
      <ServiceDefinitionRefID>SRV8_1</ServiceDefinitionRefID>
      <ServiceDefinitionRefID>SRV8_2</ServiceDefinitionRefID>
      <ServiceDefinitionRefID>SRV8_3</ServiceDefinitionRefID>
    </ServiceBundle>
  </ServiceDefinitionAssociation>
  <ServiceDefinitionID>SRV8</ServiceDefinitionID>
</ServiceDefinition>

```

\*\*\*\*\*Sub-Service details:

SRV8\_3\*\*\*\*\*

```

<ServiceDefinition>
  <Desc>
    <DescText>F</DescText>
    <MarkupStyleText>Service_Type</MarkupStyleText>
  </Desc>
  <Desc>
    <DescText>01</DescText>
    <MarkupStyleText>BKM</MarkupStyleText>
  </Desc>
  <Desc>
    <DescText>SA</DescText>
    <MarkupStyleText>Group</MarkupStyleText>
  </Desc>

```

```

<Desc>
  <DescText>Chargeable</DescText>
</Desc>
<Name>PACK SUB SERVICE</Name>
<OwnerCode>6X</OwnerCode>
<RFIC>A</RFIC>
<RFISC>0B5</RFISC>
<ServiceDefinitionID>SRV8_3</ServiceDefinitionID>
</ServiceDefinition>

```

Table 13 Example for Pack of services with seat

## DataLists

### BaggageAllowance

One or several *BaggageAllowance* elements can be present for each combination of passengers (PAX) and segment.

Several types of checked baggage allowance are possible, each baggage allowance has to include at least one of the following:

- Piece Allowance.
- Weight Allowance.
- Maximum Dimension Allowance.
- Minimum Dimension Allowance.

*BaggageAllowance* association to the passenger (Pax) and segment(s) is done through the *ServiceDefinition* node.

Designation	Repetition	Status	Location	Comments
<b>BaggageAllowanceList</b>	<b>0...1</b>	<b>O</b>	<b>.../Response/DataLists/BaggageAllowanceList</b>	
BaggageAllowance	1...N	M	/BaggageAllowanceList/BaggageAllowance	Description of a baggage allowance.
Applicable Party Text	0...1	O	/BaggageAllowanceList/BaggageAllowance/ApplicablePartyText	Value is always "Traveler".
BaggageAllowance ID	1	M	/BaggageAllowanceList/BaggageAllowance/BaggageAllowanceID	Unique baggage allowance identifier - Usually defined as <i>FBA1</i> (Free Baggage Allowance 1), <i>FBA2</i> , ...

CarrierDesigCode	0...1	O	/BaggageAllowanceList/BaggageAllowance/BDC/CarrierDesigCode	The Airline code of the carrier whose baggage allowances apply
DescText	0...1	O	/BaggageAllowanceList/BaggageAllowance/DescText	Baggage allowance description text
Total Quantity	1	M	/BaggageAllowanceList/BaggageAllowance/PieceAllowance/TotalQty	Maximum pieces of baggage allowed.
TypeCode	1	M	/BaggageAllowanceList/BaggageAllowance/TypeCode	Type of baggage supported: <ul style="list-style-type: none"> <li>• <i>CheckedBag</i></li> <li>• <i>CarryOn.</i></li> </ul>
<b>MaximumDimensionAllowance</b>	<b>0...N</b>	<b>O</b>	<b>/BaggageAllowanceList/BaggageAllowance/MaximumDimensionAllowance</b>	
HeightMeasure	0...1	O	/MaximumDimensionAllowance/HeightMeasure	Maximum height allowed for baggage
LengthMeasure	0...1	O	/MaximumDimensionAllowance/LengthMeasure	Maximum length allowed for baggage
LengthUnitOfMeasurement	1	M	/MaximumDimensionAllowance/LengthUnitOfMeasurement	Unit of measure supported: <ul style="list-style-type: none"> <li>• <i>CMT</i> for centimeters</li> <li>• <i>INH</i> for inches</li> <li>• <i>FOT</i> for foot</li> <li>• <i>MTR</i> for meter</li> </ul>
LinearMeasure	0...1	O	/MaximumDimensionAllowance/LinearMeasure	Maximum dimension allowed for linear measure which equals to height + length + width.
WidthMeasure	0...1	O	/MaximumDimensionAllowance/WidthMeasure	Maximum width allowed for baggage
<b>MinimumDimensionAllowance</b>	<b>0...N</b>	<b>O</b>	<b>/BaggageAllowanceList/BaggageAllowance/MinimumDimensionAllowance</b>	
HeightMeasure	0...1	O	/MinimumDimensionAllowance/HeightMeasure	Minimum height allowed for baggage
LengthMeasure	0...1	O	/MinimumDimensionAllowance/LengthMeasure	Minimum length allowed for baggage

LengthUnitOfMeasurement	1	M	/MinimumDimensionAllowance/LengthUnitOfMeasurement	Unit of measure supported: <ul style="list-style-type: none"> <li>• <i>CMT</i> for centimeters</li> <li>• <i>INH</i> for inches</li> <li>• FOT for foot</li> <li>• MTR for meter</li> </ul>
LinearMeasure	0...1	O	/MinimumDimensionAllowance/LinearMeasure	Minimum dimension allowed for linear measure which equals to height + length + width.
WidthMeasure	0...1	O	/MinimumDimensionAllowance/WidthMeasure	Minimum width allowed for baggage
<b>WeightAllowance</b>	<b>0...N</b>	<b>O</b>	<b>/BaggageAllowanceList/BaggageAllowance/WeightAllowance</b>	
Maximum Weight Measure	0...1	O	/WeightAllowance/MaximumWeightMeasure	Maximum weight allowed for baggage
Minimum Weight Measure	0...1	O	/WeightAllowance/MinimumWeightMeasure	Minimum weight allowed for baggage
TotalMaximumWeightMeasure	0...1	O	/WeightAllowance/TotalMaximumWeightMeasure	Maximum weight allowed for all the combined pieces within this baggage allowance.
Weight Unit of Measure	1	M	/WeightAllowance/WeightUnitOfMeasurement	The unit of measure supported: <ul style="list-style-type: none"> <li>• <i>KGM</i> for kilograms</li> <li>• <i>LBR</i> for US Pounds.</li> </ul>

```

<BaggageAllowanceList>
  <BaggageAllowance>
    <ApplicablePartyText>Traveler</ApplicablePartyText>
    <BaggageAllowanceID>BAG-1</BaggageAllowanceID>
    <BDC>
      <CarrierDesigCode>6X</CarrierDesigCode>
    </BDC>
    <DescText>Extra Baggage</DescText>
    <MaximumDimensionAllowance>
      <HeightMeasure>36</HeightMeasure>
      <LengthMeasure>50</LengthMeasure>
      <LengthUnitOfMeasurement>CMT</LengthUnitOfMeasurement>
      <LinearMeasure>126</LinearMeasure>
      <WidthMeasure>40</WidthMeasure>
    </MaximumDimensionAllowance>
    <PieceAllowance>
      <TotalQty>2</TotalQty>
    </PieceAllowance>
    <TypeCode>CheckedBag</TypeCode>
    <WeightAllowance>
      <MaximumWeightMeasure>23</MaximumWeightMeasure>
      <TotalMaximumWeightMeasure>46</TotalMaximumWeightMeasure>
      <WeightUnitOfMeasurement>KGM</WeightUnitOfMeasurement>
    </WeightAllowance>
  </BaggageAllowance>
</BaggageAllowanceList>

```

Table 14 Baggage Allowance

## DatedMarketingSegmentList

This section describes the commercial designation under which a Dated Operating Segment can be booked, it can be either the operating carrier itself (when pure prime flight) or another carrier in case of codeshare.

Designation	Repetition	Status	Location	Comments
<b>DatedMarketingSegment</b>	<b>1...N</b>	<b>M</b>	<b>.../Response/DataLists/DatedMarketingSegmentList/DatedMarketingSegment</b>	
Marketing Carrier Code	1	M	/CarrierDesigCode	Airline Code (2 alphanumeric identifier).
CarrierName	0...1	O	/CarrierName	Commercial name of the carrier.
Marketing Segment ID	1	M	/DatedMarketingSegmentId	Unique identifier that will be used as reference in <i>PaxSegmentList</i> node. Always starts with <b>DMS (DatedMarketingSegment)</b>

Designation	Repetition	Status	Location	Comments
				followed by a number Example: DMS15.
Operating Segment ID	1	M	/DatedOperatingSegmentRefId	Reference to <u>DatedOperatingSegmentID</u> defined in <i>DatedOperatingSegmentList</i> node. Always starts with <b>DOS (DatedOperatingSegment)</b> followed by a number. Example: DOS15.
Marketing Carrier Flight number	1	M	/MarketingCarrierFlightNumberText	Flight number of the Marketing carrier (can be different from Operating carrier flight number).
<b>Arrival structure</b>	<b>1</b>	<b>M</b>	<b>.../Response/DataLists/DatedMarketingSegmentList/DatedMarketingSegment/Arrival</b>	
Aircraft scheduled arrival	0...1	O	/AircraftScheduledDateTime	Arrival date & time, in Local time (YYYY-MM-DDTHH:MM:SS). Example: 2024-04-11T05:55:00.
Arrival Airport Code	1	M	/IATA_LocationCode	IATA 3-letters airport/city code .
Arrival Terminal	0...1	O	/TerminalName	Terminal arrival. Not returned if the airport has only one terminal.
<b>Departure structure</b>	<b>1</b>	<b>M</b>	<b>.../Response/DataLists/DatedMarketingSegmentList/DatedMarketingSegment/Dep</b>	
Aircraft scheduled departure	0...1	O	/AircraftScheduledDateTime	Departure date & time, in Local time (YYYY-MM-DDTHH:MM:SS). Example: 2024-04-10T19:30:00.
Departure Airport Code	1	M	/IATA_LocationCode	IATA 3-letters airport/city code.
Departure Terminal	0...1	O	/TerminalName	Terminal departure. Not returned if the airport has only one terminal.

```

<DatedMarketingSegmentList>
  <DatedMarketingSegment>
    <Arrival>
      <AircraftScheduledDateTime>2024-04-
11T05:55:00</AircraftScheduledDateTime>
      <IATA_LocationCode>SYD</IATA_LocationCode>
      <TerminalName>2</TerminalName>
    </Arrival>
    <CarrierDesigCode>6X</CarrierDesigCode>
    <CarrierName>AMADEUS SIX</CarrierName>
    <DatedMarketingSegmentId>DMS15</DatedMarketingSegmentId>
    <DatedOperatingSegmentRefId>DOS15</DatedOperatingSegmentRefId>
    <Dep>
      <AircraftScheduledDateTime>2024-04-
10T19:30:00</AircraftScheduledDateTime>
      <IATA_LocationCode>SIN</IATA_LocationCode>
      <TerminalName>1</TerminalName>
    </Dep>

    <MarketingCarrierFlightNumberText>221</MarketingCarrierFlightNumberText>
  </DatedMarketingSegment>
</DatedMarketingSegmentList>

```

Table 15 Example of DatedMarketingSegmentList

## DatedOperatingSegmentList

This section describes the information related to the Dated Operating Segment(s) used between board point and any subsequent off point within the same flight designator - could be one or more legs.

Designation	Repetition	Status	Location	Comments
<b>Operating segment information</b>	<b>1...N</b>	<b>M</b>	<b>.../Response/DataLists/DatedOperatingSegmentList/DatedOperatingSegment</b>	
Operating Carrier Code	1	M	/CarrierDesigCode	Airline Code (2 alphanumeric identifier).
Carrier Name	0...1	O	/CarrierName	Name of the Operating carrier.
Operating Segment Leg ID	0...N	O	/DatedOperatingLegRefID	Reference of the leg defined in the <i>DatedOperatingLegList</i> node, always starts with <b>LEG</b> followed by a number. Example: LEG1.

Designation	Repetition	Status	Location	Comments
Operating Segment ID	1	M	/DatedOperatingSegmentId	Identifies the segment operated by the Operating carrier. Always starts with <b>DOS (DatedOperatingSegment)</b> , followed by a number. Example: DOS15.
Disclosure ID	0...1	O	/DisclosureRefID	Reference of the disclosure defined in the <i>DisclosureList</i> node. Example: DIS1.
Duration	0...1	O	/Duration	Total segment time including the combined air time and connection times of any legs.  Example: PT8H15M  NB: Duration is not returned in this node in <i>OrderViewRS</i> as information is already returned in <i>PaxJourney</i> node
Operating Carrier Flight number	0...1	O	/OperatingCarrierFlightNumberText	Flight number of the Operating carrier (can be different from the Marketing carrier flight number).
Secure Flight Indicator	0...1	O	/SecureFlightInd	Flag to indicate if the flight is a "secure flight". It is returned only when the value is true (Example: in case of flight to an US airport).

```

<DatedOperatingSegmentList>
  <DatedOperatingSegment>
    <CarrierDesigCode>6X</CarrierDesigCode>
    <CarrierName>Amadeus Six</CarrierName>
    <DatedOperatingLegRefID>LEG16</DatedOperatingLegRefID>
    <DatedOperatingSegmentId>DOS15</DatedOperatingSegmentId>
    <DisclosureRefID>DIS1</DisclosureRefID>
    <Duration>PT8H5M</Duration>
    <OperatingCarrierFlightNumberText>221</OperatingCarrierFlightNumberText>
  </DatedOperatingSegment>
  <SecureFlightInd>true</SecureFlightInd>
</DatedOperatingSegmentList>

```

Table 16 Example of DatedOperatingSegmentList



## PaxJourneyList

This section describes one travel solution (i.e. one bound) for the whole passenger's itinerary, including list of all intermediate flights between origin and destination.

Designation	Repetition	Status	Location	Comments
<b>Pax Journey parameters</b>			<b>.../Response/DataLists/PaxJourneyList/PaxJourney</b>	
Total Effective Flight Time	0...1	O	/Duration	Total segment time including the combined air time and connection times of any legs.  Example: PT2H55M.
Reference of the travel solution	1	M	/PaxJourneyID	Identifies the passenger journey - Always start with <b>FLT</b> followed by a number  Example: FLT3.
Flight Segment References	1...6	M	/PaxSegmentRefID	Reference of the segment defined in <i>PaxSegmentList</i> node - Always start with <b>SEG</b> followed by a number.  Example: SEG3.

```

<PaxJourneyList>
  <PaxJourney>
    <Duration>PT2H55M</Duration>
    <PaxJourneyID>FLT3</PaxJourneyID>
    <PaxSegmentRefID>SEG3</PaxSegmentRefID>
  </PaxJourney>
  <PaxJourney>
    <Duration>PT6H30M</Duration>
    <PaxJourneyID>FLT1</PaxJourneyID>
    <PaxSegmentRefID>SEG14</PaxSegmentRefID>
    <PaxSegmentRefID>SEG15</PaxSegmentRefID>
  </PaxJourney>
  <PaxJourney>
    <Duration>PT7H30M</Duration>
    <PaxJourneyID>FLT2</PaxJourneyID>
    <PaxSegmentRefID>SEG25</PaxSegmentRefID>
    <PaxSegmentRefID>SEG26</PaxSegmentRefID>
  </PaxJourney>
  <PaxJourney>
    <Duration>PT3H5M</Duration>
    <PaxJourneyID>FLT4</PaxJourneyID>
    <PaxSegmentRefID>SEG16</PaxSegmentRefID>
  </PaxJourney>
</PaxJourneyList>

```

Table 17 Example PaxJourneyList

## PaxList

The list of passengers is returned in this element.

Designation	Repetition	Status	Location	Comments
<b>Pax section</b>			<b>IATA_ServiceListRS/Response/DataLists/PaxList/Pax</b>	
PaxID	1	M	/Pax/PaxID	Unique passenger ID. Examples: PAX1, PAX2, etc...
PaxRefID	1	O	/Pax/PaxRefID	Passenger reference ID. Used to link infant to an adult.
PTC	1	O	/Pax/PTC	Type code applying to the Passenger which typically drives pricing. Example: ADT, CHD, etc...

Example:

```

<PaxList>
  <Pax>
    <PaxID>PAX1</PaxID>
    <PTC>ADT</PTC>
  </Pax>
</PaxList>

```

Table 18 Example of PaxList

## PaxSegmentList

This section describes each segment with its associated flight data.

Designation	Repetition	Status	Location	Comments
<b>PaxSegment</b>	<b>1...N</b>	<b>M</b>	<b>.../Response/DataLists/PaxSegmentList/PaxSegment</b>	
Cabin code	0...1	O	/CabinTypeAssociationChoice/SegmentCabinType/CabinTypeCode	Cabin class code for which the seatmap is requested in case of SeatAvailabilityRS.
Cabin name	0...1	O	/CabinTypeAssociationChoice/SegmentCabinType/CabinTypeName	Cabin class name for which the seatmap is requested in case of SeatAvailabilityRS.
DatedMarketingSegmentRefId	1	M	/DatedMarketingSegmentRefId	A reference to a unique identifier of a dated marketing segment used in a message.
Marketing Booking class code	0...1	O	/MarketingCarrierRBD_Code	Booking class code. It is equivalent to the fare RBD.
Pax Segment ID	1	M	/PaxSegmentID	Reference of the segment.

```

<PaxSegmentList>
  <PaxSegment>
    <CabinTypeAssociationChoice>
      <SegmentCabinType>
        <CabinTypeCode>2</CabinTypeCode>
        <CabinTypeName>Y</CabinTypeName>
      </SegmentCabinType>
    </CabinTypeAssociationChoice>
    <DatedMarketingSegmentRefId>DMS1</DatedMarketingSegmentRefId>
    <MarketingCarrierRBD_Code>D</MarketingCarrierRBD_Code>
    <PaxSegmentID>SEG6</PaxSegmentID>
  </PaxSegment>
</PaxSegmentList>

```

Table 19 Example of PaxSegmentList

## ServiceDefinitionList

Designation	Repetition	Status	Location	Comments
<b>Service Definition section</b>			<b>IATA_ServiceListRS/Response/DataLists/ServiceDefinitionList/ServiceDefinition</b>	
Booking instructions	1	O	/ServiceDefinition/BookingInstructions	This element is used to return the list of instructions for the formatting of the free text needed in the booking of some services.
Method Text	1	O	/ServiceDefinition/BookingInstructions/MethodText	PNR booking method.
OSI	1...N	O	/ServiceDefinition/BookingInstructions/OSI_Text	Other service information.
Special services	1...N	O	/ServiceDefinition/BookingInstructions/SpecialService	Special service information.
Quantity	1	O	/ServiceDefinition/BookingInstructions/SpecialService/Qty	Quantity of SSR that will be added.
Service Description	1	M	/ServiceDefinition/Desc	An account or representation of the certain or major aspects, characteristics or features

Designation	Repetition	Status	Location	Comments
				of a person, object or event.
Service Description Text	1	O	/ServiceDefinition/Desc/DescText	Description text value corresponding to the MarkupStyleText.
Mark-up Style Text	1	O	/ServiceDefinition/Desc/MarkupStyleText	Possible values are presented in the table. below(Service_Type,BKM, Group,SubGroup,Category_Free).
Service Name	1	M	/ServiceDefinition/Name	Should be different than service description.
Owner Code	1	O	/ServiceDefinition/Owner Code	Airline code assigned to a carrier.
Reason for Issuance Code (RFIC)	1	O	/ServiceDefinition/RFIC	A (Air Transportation), C (Baggage), E (Airport Services), F (Merchandise), G (In-flight Services).
Reason for Issuance sub Code (RFISC)	1	O	/ServiceDefinition/RFISC	Examples: OCC (First Checked Bag) OB1 (In-flight Entertainment) OBX (Lounge).
Service Code	1	O	/ServiceDefinition/ServiceCode	Airline specific service code which can be associated with Reason for Issuance Sub Code. Example: XLEG for Extra Leg Room Seat, XBAG for Extra Bag.
Service Definition Association	1	O	/ServiceDefinition/ServiceDefinitionAssociation	Choice to determine if the information of this Service Definition needs to be extended with specific Bag or Seat characteristics or whether the ServiceDefinition is used as a bundle of further ServiceDefinitions.
Baggage Allowance Ref ID	1	O	/ServiceDefinition/ServiceDefinitionAssociation/BaggageAllowanceRef/BaggageAllowanceRefID	Reference to a Baggage Allowance ID.

Designation	Repetition	Status	Location	Comments
Service Definition Reference ID	1	O	/ServiceDefinition/ServiceDefinitionAssociation/ServiceBundle/ServiceDefinitionRefID	Reference to further Service Definition which form part of this Service Bundle.
Service Definition ID	1	M	/ServiceDefinition/ServiceDefinitionID	Service Definition ID.

This table presents all possible values of the descriptions:

Designation	MarkupStyleText	DescText	Comments
Service type	Service_Type	Contains the ATPCO service type code. Example: F for Flight Related Service.	Applies only for Ancillary services.
Booking method	BKM	Contains the applicable booking method. Possible values are 01 or 02.	Applies only for Ancillary services.
Group	Group	Contains the ATPCO service group code. Example: BG for Baggage.	Applies only for Ancillary services.
Subgroup	Subgroup	Contains the ATPCO service subgroup code. Example: SP for Sporting Equipment.	Applies only for Ancillary services.
Free or Chargeable		Contains a Flag to distinguish Free standard services (Value=Free) and Ancillary services (value=Chargeable).	Applies for both Ancillary services and Free standard services. Note: value chargeable is returned for all ancillary services (non exempted and exempted services).
Category for free services	Category_Free	Contains the category of the free standard services defined on SSR table.	Applies only for Free Standard Services.
Description 1	Description1	Contains the ATPCO First Service Description	atpcoFirstServiceDescription
Description 2	Description2	Contains the ATPCO Second Service Description	atpcoSecondServiceDescription

```

<ServiceDefinition>
  <Desc>
    <DescText>F</DescText>
    <MarkupStyleText>Service_Type</MarkupStyleText>
  </Desc>
  <Desc>
    <DescText>01</DescText>
    <MarkupStyleText>BKM</MarkupStyleText>
  </Desc>
  <Desc>
    <DescText>BG</DescText>
    <MarkupStyleText>Group</MarkupStyleText>
  </Desc>
  <Desc>
    <DescText>Chargeable</DescText>
  </Desc>
  <ServiceDefinitionAssociation>
    <BaggageAllowanceRefID>CBA1</BaggageAllowanceRefID>
  </ServiceDefinitionAssociation>
  <Name>ONE KILOGRAM BAGGAGE</Name>
  <OwnerCode>6X</OwnerCode>
  <RFIC>C</RFIC>
  <RFISC>0AA</RFISC>
  <ServiceCode>XBAG</ServiceCode>
  <ServiceDefinitionID>SRV9</ServiceDefinitionID>
</ServiceDefinition>

```

Table 20 Service definition example

```

<ServiceDefinition>
  <BookingInstructions>
    <SpecialService>
      <Qty>1</Qty>
    </SpecialService>
  </BookingInstructions>
  <Desc>
    <DescText>Free</DescText>
  </Desc>
  <Desc>
    <DescText>PASSENGER ASSISTANCE</DescText>
    <MarkupStyleText>Category_Free</MarkupStyleText>
  </Desc>
  <Name>WHEELCHAIR TO AIRCRAFT DOOR REQUEST</Name>
  <OwnerCode>6X</OwnerCode>
  <ServiceCode>WCHR</ServiceCode>
  <ServiceDefinitionID>SRV105</ServiceDefinitionID>
</ServiceDefinition>

```

Table 21 Free service example

```

<ServiceDefinition>
  <BookingInstructions>
    <MethodText>BWT\s?%WVAL%KG</MethodText>
    <OSI_Text>WVAL</OSI_Text>
    <OSI_Text>[0-9]{1,3}</OSI_Text>
    <SpecialService>
      <Qty>1</Qty>
    </SpecialService>
  </BookingInstructions>
  <Desc>
    <DescText>Chargeable</DescText>
  </Desc>
  <Name>EXTRA BAGGAGE</Name>
  <OwnerCode>6X</OwnerCode>
  <RFIC>C</RFIC>
  <RFISC>0AA</RFISC>
  <ServiceCode>XBAG</ServiceCode>
  <ServiceDefinitionAssociation>
    <BaggageAllowanceRef>
      <BaggageAllowanceRefID>CBA1</BaggageAllowanceRefID>
    </BaggageAllowanceRef>
  </ServiceDefinitionAssociation>
  <ServiceDefinitionID>SRV3</ServiceDefinitionID>
</ServiceDefinition>

```

Table 22 Booking instruction example



# Errors and Warnings

## Errors

If a blocking error occurred during the process, the Error Structure is returned and filled.

Designation	Repetition	Status	Location	Comments
<b>Error structure</b>	<b>1...N</b>	<b>M</b>	<b>.../Error</b>	
Code	0...1	O	/Code	Error code.
DescText	0...1	O	/DescText	Free text description of the provided error.
LangCode	1	M	/LangCode	The two letters ISO language code associated with the error response.
TypeCode	1	M	/TypeCode	E - Error with impact on flow execution. W - Warning with no impact on flow execution. F - Fatal error that causes flow termination.

```

<Error>
  <Code>911</Code>
  <DescText>UNABLE TO RETRIEVE OFFER</DescText>
  <LangCode>EN</LangCode>
  <TypeCode>E</TypeCode>
</Error>

```

Table 23 Example of Error

## Non-exhaustive list of errors supported

AirShopping	
Error Code	Error Description
710	NO FARE FOUND FOR REQUESTED ITINERARY
710	NO ITINERARY FOUND FOR REQUESTED SEGMENT
367	NO ACTIVE ITINERARY IN THE AIRLINE PROFILE

710	UNABLE TO FARE - PRICE MANUALLY
710	NO FARE FOUND FOR REQUESTED FARE FAMILY
911	TARGET OFFICE ID NOT FOUND
710	NO JOURNEY FOUND FOR REQUESTED ITINERARY
710	NO FARE FAMILY FOUND FOR REQUESTED COMMERCIAL FARE FAMILY
710	THE SYSTEM DOES NOT ACCEPT MORE THAN 9 PASSENGERS. PLEASE CHANGE YOUR REQUEST
710	NO FLIGHT FOUND FOR REQUESTED ITINERARY
<b>OfferPrice</b>	
Error Code	Error Description
911	UNABLE TO RETRIEVE OFFER
911	INTERNAL PROCESSING ERROR
912	INVALID INPUT DATA
911	UNEXPECTED ERROR DURING SERVICE EXECUTION
<b>OrderCreate</b>	
Error Code	Error Description
911	NOT AVAILABLE AND WAITLIST CLOSED
911	UNABLE TO CREATE ORDER
911	UNABLE TO RETRIEVE OFFER
912	ERROR AT END OF TRANSACTION TIME: SIMULTANEOUS CHANGES TO PNR - USE WRA/RT TO PRINT OR IGNORE
911	SPECIFIC SEAT REQUESTED NOT AVAILABLE - RESTRICTED
911	NOT AVAILABLE IN THIS CONNECTION
160	INVALID PASSENGER SELECTION
149	INVALID NAME LENGTH: ITEM TOO LONG / NOT ENTERED /
912	ERROR AT END OF TRANSACTION TIME: NEED TELEPHONE, TICKET RECONCILIATION NEEDED
462	PAYMENT FAILED
318	INVALID PASSENGER CONTACT: INVALID PASSENGER ASSOCIATION
911	REQUEST REJECTED

911	SPECIFIC SEAT REQUESTED IS NOT AVAILABLE.
911	SSR COULD NOT BE PROCESSED CORRECTLY: INVALID TEXT DATA
425	FQTV NUMBER NOT ACCEPTED: FREQUENT FLYER NUMBER NOT FOUND
466	INVALID FORM OF PAYMENT
425	FQTV NUMBER NOT ACCEPTED: NO MATCH FOR NAME
912	ERROR AT END OF TRANSACTION TIME: SIMULTANEOUS CHANGES TO PNR - USE WRA/RT TO PRINT OR IGNORE, TICKET RECONCILIATION NEEDED
<b>SeatAvailability</b>	
Error Code	Error Description
911	UNABLE TO RETRIEVE OFFER
715	INVALID FARE BASIS
160	INVALID PASSENGER SELECTION
129	NO MATCH FOR RECORD LOCATOR
911	UNABLE TO RETRIEVE PNR: OK
715	INVALID REQUESTED BOUND
73R	INVALID FARE BASIS
<b>ServiceList</b>	
Error Code	Error Description
911	CHECK FORMAT
911	NO VALID RECOMMENDATIONS FOUND
911	INVALID SEGMENT SELECTION
911	SPECIFY PRINTER FOR THIS STOCK TYPE
911	ACTION CODE
911	CHECK CARRIER CODE
911	CHECK - CALL SUPERVISOR
911	NO NAME
911	ITINERARY PRICING REQUIRED BEFORE SERVICE PRICING
<b>OrderRetrieve</b>	
Error Code	Error Description

911	RESERVATION PREVIOUSLY CANCELLED
129	NO MATCH FOR RECORD LOCATOR
911	INVALID NAME
911	INVALID RECORD LOCATOR
911/36 8	AUTHENTICATION ERROR
911/36 8	NOT AUTHORIZED
911/36 8	TARGET OFFICE ID NOT FOUND
911	UNEXPECTED ERROR DURING SERVICE EXECUTION
911	INTERNAL PROCESSING ERROR
<b>OrderReshop</b>	
Error Code	Error Description
368	ATC REFUND NOT AUTHORIZED
911	UNABLE TO PROCESS SHOPPING: NO FARE FOUND FOR REQUESTED ITINERARY
911	UNABLE TO PROCESS RESHOP - INELIGIBLE FOR REQUESTED ACTION
911	INVALID COUPON STATUS FOR TICKET UPDATE
911	UNABLE TO RETRIEVE PNR: NO MATCH FOR RECORD LOCATOR
911	TICKET IS NOT ELIGIBLE FOR EXCHANGE
911	UNABLE TO RETRIEVE OFFER
368	NOT AUTHORIZED
912	INVALID INPUT DATA
30	UNABLE TO PROCESS REFUND - PROCESS MANUALLY
911	UNABLE TO PROCESS SHOPPING: NO ITINERARY FOUND FOR REQUESTED SEGMENT
911	CHECK NUMBER OF ITEMS IN LIST
30	INVALID REFUND AMOUNT PLEASE IGNORE AND PROCESS MANUALLY
913	UNABLE TO RETRIEVE PNR: NO MATCH FOR RECORD LOCATOR
911	REFUND PROCESS FAILED
<b>OrderQuote</b>	

Error Code	Error Description
368	NOT AUTHORIZED
368	RESHOP OPTIONS RESTRICTED
911	NOT ALLOWED FOR WAITLISTED SEGMENTS
<b>OrderChange</b>	
Error Code	Error Description
462	PAYMENT FAILED
376/911	UNABLE TO CREATE A TRAVEL-DOCUMENT / PAYMENT NOT REVERSED 1
466	UNABLE TO CREATE PAYMENT SOLUTION - REFER TO DISPATCH REPORT
911	SPECIFIC SEAT REQUESTED IS NOT AVAILABLE.
466	INVALID FORM OF PAYMENT
911	SSR NOT CREATED - DUPLICATE EXISTS
376/911	ERROR AT ISSUANCE TIME: XX ETKT: NOT AUTHORISED 1
911	SSR NOT CREATED - DUPLICATE MEAL
911	UNABLE TO CREATE ORDER
368	NOT AUTHORIZED BY IATA
376	OB FEES PRICING CALCULATION PROBLEM: OB Fees pricing mismatch. Please price the offer again
911	RESERVATION PREVIOUSLY CANCELLED
911	ERROR AT ISSUANCE TIME: TST EXPIRED - OVERRIDE OR DELETE AND REPRICE
376	ERROR AT ISSUANCE TIME: TICKETING INHIBITED-SSR DOCS MISSING FOR P1
912	ERROR AT END OF TRANSACTION TIME: SIMULTANEOUS CHANGES TO PNR - USE WRA/RT TO PRINT OR IGNORE
911	SEAT ITEMS ALREADY EXIST FOR REQUESTED SEGMENTS
<b>OrderList</b>	
Error Code	Error Description
911	NO ORDER FOUND
368	NOT AUTHORIZED

Error messages that can be returned in the message response to explain that the message couldn't be processed.

Error	Description
NO VALID RECOMMENDATION FOUND	No priced ancillary found in service catalog.
ORDER NOT FOUND	Order does not exist.
Unable to process	Error returned when too many services are found. To solve this, select fewer PAX in the input

## Warnings

This section describes information related to Warning that can be returned in response of NDC messages.

Designation	Repetition	Status	Location	Comments
<b>Warning structure</b>	<b>1...N</b>	<b>O</b>	<b>.../Response/Warning</b>	
IATA Warning Code	0...1	O	/Code	Field Code is used to convey the IATA code of the warning.
Warning Description	0...1	O	/DescText	Warning description. In case a non-IATA Warning is returned, this field includes a concatenation of the non-IATA Warning Code and the non-IATA Warning message with "-" as separator. Example: 600 - NOT ALL CHARGEABLE SEATS HAVE BEEN PRICED.
Language Code	1	M	/LangCode	Language code associated with the warning response.
TagText	0...1	O	/TagText	Identifies the tag/XPath which relates to the provided Warning.
TypeCode	0...1	O	/TypeCode	Uses a bilaterally agreed set of values to indicate the warning type.

```

<Warning>
  <Code>710</Code>
  <DescText>13555 - Cabin varies over legs.</DescText>
  <LangCode>EN</LangCode>
  <TypeCode>W</TypeCode>
</Warning>

```

Table 24 Example of a non IATA warning

Warning indicating the message could be processed with some limitations:

Warning	Description
CHARGEABLE SERVICES - NO VALID RECOMMENDATION FOUND	No chargeable service to return, only free services.
FREE SERVICES - NO VALID RECOMMENDATION FOUND	No free service to return, only chargeable services.

# Examples

## Use Case 1 - Prime booking flow, Catalog requested for the Offer full content

### Use Case Description

Catalogue of services is requested for all the passengers and flights present in the offer.

Only the OfferID and the mandatory OfferItemID (containing the flights) are needed in input.

### Pre-conditions

The AirShopping transaction has been successfully run and at least one valid offer with at least one mandatory offer item is stored.



```

<IATA_ServiceListRQ>
  <DistributionChain>
    <DistributionChainLink>
      <Ordinal>0</Ordinal>
      <OrgRole>Seller</OrgRole>
      <ParticipatingOrg>
        <OrgID>12457896</OrgID>
      </ParticipatingOrg>
    </DistributionChainLink>
    <DistributionChainLink>
      <Ordinal>1</Ordinal>
      <OrgRole>Distributor</OrgRole>
      <ParticipatingOrg>
        <OrgID>1A</OrgID>
      </ParticipatingOrg>
    </DistributionChainLink>
    <DistributionChainLink>
      <Ordinal>2</Ordinal>
      <OrgRole>Carrier</OrgRole>
      <ParticipatingOrg>
        <OrgID>6X</OrgID>
      </ParticipatingOrg>
    </DistributionChainLink>
  </DistributionChain>
  <PayloadAttributes>
    <VersionNumber>21.3</VersionNumber>
  </PayloadAttributes>
  <POS>
    <Country>
      <CountryCode>FR</CountryCode>
    </Country>
  </POS>
  <Request>
    <ServiceListCoreRequest>
      <OfferRequest>
        <Offer>
          <OfferID>N7sgHBRDJFHStdhbfjdf</OfferID>
          <OfferItem>
            <OfferItemID>N7sgHBRDJFHStdhbfjdf-1</OfferItemID>
            <Service>
              <ServiceID>1</ServiceID>
            </Service>
          </OfferItem>
          <OwnerCode>6X</OwnerCode>
        </Offer>
      </OfferRequest>
    </ServiceListCoreRequest>
  </Request>
</IATA_ServiceListRQ>

```

Table 25 Use Case 1 - ServiceListRQ

## Reply

New offer items are added to the offer given in input in ServiceListRQ. One offer item per service.

```

<IATA_ServiceListRS>
  <Response>
    <ALaCarteOffer>
      <OfferID>N7sgHBRDJFHStdhubfjdf</OfferID>
      <OfferItem>
        <Eligibility>
          <OfferFlightAssociations>
            <PaxSegmentReferences>
              <PaxSegmentRefID>SEG8</PaxSegmentRefID>
              <PaxSegmentRefID>SEG56</PaxSegmentRefID>
            </PaxSegmentReferences>
          </OfferFlightAssociations>
          <PaxRefID>PAX1</PaxRefID>
        </Eligibility>
        <OfferItemID>6sagwejfefhefk</OfferItemID>
        <Service>
          <ServiceDefinitionRefID>SRV1</ServiceDefinitionRefID>
          <ServiceID>1</ServiceID>
        </Service>
        <UnitPrice>
          <BaseAmount CurCode="EUR">152.44</BaseAmount>
          <TaxSummary>
            <TotalTaxAmount CurCode="EUR">0.00</TotalTaxAmount>
          </TaxSummary>
          <TotalAmount CurCode="EUR">152.44</TotalAmount>
        </UnitPrice>
      </OfferItem>
      <OfferItem>
        <Eligibility>
          <OfferFlightAssociations>
            <PaxSegmentReferences>
              <PaxSegmentRefID>SEG8</PaxSegmentRefID>
              <PaxSegmentRefID>SEG56</PaxSegmentRefID>
            </PaxSegmentReferences>
          </OfferFlightAssociations>
          <PaxRefID>PAX2</PaxRefID>
        </Eligibility>
        <OfferItemID>96xfshfbdjghdrijj_7erghjdng</OfferItemID>
        <Service>
          <ServiceDefinitionRefID>SRV2</ServiceDefinitionRefID>
          <ServiceID>1</ServiceID>
        </Service>
        <UnitPrice>
          <BaseAmount CurCode="EUR">152.44</BaseAmount>
          <TaxSummary>
            <TotalTaxAmount CurCode="EUR">0.00</TotalTaxAmount>
          </TaxSummary>
          <TotalAmount CurCode="EUR">152.44</TotalAmount>
        </UnitPrice>
      </OfferItem>
      <OwnerCode>6X</OwnerCode>
    </ALaCarteOffer>
    <DataLists>

```

```

    <DatedMarketingSegmentList>
      <DatedMarketingSegment>
        <Arrival>
          <AircraftScheduledDateTime>2022-11-
02T12:05:00</AircraftScheduledDateTime>
          <IATA_LocationCode>NCE</IATA_LocationCode>
        </Arrival>
        <CarrierDesigCode>6X</CarrierDesigCode>
        <CarrierName>AMADEUS SIX</CarrierName>
        <DatedMarketingSegmentId>DMS1</DatedMarketingSegmentId>

    <DatedOperatingSegmentRefId>DOS1</DatedOperatingSegmentRefId>
      <Dep>
        <AircraftScheduledDateTime>2022-11-
02T10:05:00</AircraftScheduledDateTime>
        <IATA_LocationCode>LHR</IATA_LocationCode>
      </Dep>

    <MarketingCarrierFlightNumberText>9876</MarketingCarrierFlightNumberText>
  </DatedMarketingSegment>
  <DatedMarketingSegment>
    <Arrival>
      <AircraftScheduledDateTime>2022-12-
02T09:00:00</AircraftScheduledDateTime>
      <IATA_LocationCode>LHR</IATA_LocationCode>
    </Arrival>
    <CarrierDesigCode>6X</CarrierDesigCode>
    <CarrierName>AMADEUS SIX</CarrierName>
    <DatedMarketingSegmentId>DMS2</DatedMarketingSegmentId>

  <DatedOperatingSegmentRefId>DOS2</DatedOperatingSegmentRefId>
    <Dep>
      <AircraftScheduledDateTime>2022-12-
02T08:00:00</AircraftScheduledDateTime>
      <IATA_LocationCode>NCE</IATA_LocationCode>
    </Dep>

  <MarketingCarrierFlightNumberText>9891</MarketingCarrierFlightNumberText>
</DatedMarketingSegment>
</DatedMarketingSegmentList>
<DatedOperatingSegmentList>
  <DatedOperatingSegment>
    <CarrierDesigCode>6X</CarrierDesigCode>
    <CarrierName>AMADEUS SIX</CarrierName>
    <DatedOperatingSegmentId>DOS1</DatedOperatingSegmentId>
    <SecureFlightInd>false</SecureFlightInd>
  </DatedOperatingSegment>
  <DatedOperatingSegment>
    <CarrierDesigCode>6X</CarrierDesigCode>
    <CarrierName>AMADEUS SIX</CarrierName>
    <DatedOperatingSegmentId>DOS2</DatedOperatingSegmentId>
    <SecureFlightInd>false</SecureFlightInd>
  </DatedOperatingSegment>

```

```

</DatedOperatingSegmentList>
<PaxJourneyList>
  <PaxJourney>
    <Duration>PT1H0M</Duration>
    <PaxJourneyID>FLT1</PaxJourneyID>
    <PaxSegmentRefID>SEG8</PaxSegmentRefID>
  </PaxJourney>
  <PaxJourney>
    <Duration>PT2H0M</Duration>
    <PaxJourneyID>FLT2</PaxJourneyID>
    <PaxSegmentRefID>SEG56</PaxSegmentRefID>
  </PaxJourney>
</PaxJourneyList>
<PaxList>
  <Pax>
    <PaxID>PAX1</PaxID>
    <PTC>ADT</PTC>
  </Pax>
  <Pax>
    <PaxID>PAX2</PaxID>
    <PTC>CHD</PTC>
  </Pax>
  <Pax>
    <PaxID>PAX11</PaxID>
    <PaxRefID>PAX1</PaxRefID>
    <PTC>INF</PTC>
  </Pax>
</PaxList>
<PaxSegmentList>
  <PaxSegment>

<DatedMarketingSegmentRefId>DMS1</DatedMarketingSegmentRefId>
  <MarketingCarrierRBD_Code>X</MarketingCarrierRBD_Code>
  <PaxSegmentID>SEG8</PaxSegmentID>
</PaxSegment>
<PaxSegment>

<DatedMarketingSegmentRefId>DMS2</DatedMarketingSegmentRefId>
  <MarketingCarrierRBD_Code>X</MarketingCarrierRBD_Code>
  <PaxSegmentID>SEG56</PaxSegmentID>
</PaxSegment>
</PaxSegmentList>
<ServiceDefinitionList>
  <ServiceDefinition>
    <Desc>
      <DescText>F</DescText>
      <MarkupStyleText>Service_Type</MarkupStyleText>
    </Desc>
    <Desc>
      <DescText>01</DescText>
      <MarkupStyleText>BKM</MarkupStyleText>
    </Desc>
  </ServiceDefinition>
</ServiceDefinitionList>

```

```

        <DescText>BG</DescText>
        <MarkupStyleText>Group</MarkupStyleText>
    </Desc>
    <Desc>
        <DescText>Chargeable</DescText>
    </Desc>
    <Name>EXCESS BAG 23KG</Name>
    <OwnerCode>6X</OwnerCode>
    <RFIC>C</RFIC>
    <RFISC>N01</RFISC>
    <ServiceCode>XBAG</ServiceCode>
    <ServiceDefinitionID>SRV1</ServiceDefinitionID>
</ServiceDefinition>
<ServiceDefinition>
    <Desc>
        <DescText>F</DescText>
        <MarkupStyleText>Service_Type</MarkupStyleText>
    </Desc>
    <Desc>
        <DescText>01</DescText>
        <MarkupStyleText>BKM</MarkupStyleText>
    </Desc>
    <Desc>
        <DescText>BG</DescText>
        <MarkupStyleText>Group</MarkupStyleText>
    </Desc>
    <Desc>
        <DescText>Chargeable</DescText>
    </Desc>
    <Name>EXCESS BAG 23KG</Name>
    <OwnerCode>6X</OwnerCode>
    <RFIC>C</RFIC>
    <RFISC>N01</RFISC>
    <ServiceCode>XBAG</ServiceCode>
    <ServiceDefinitionID>SRV2</ServiceDefinitionID>
</ServiceDefinition>
</ServiceDefinitionList>
</DataLists>
</Response>
<PayloadAttributes>
    <CorrelationID>WGLFRUXG3A1S1VGM#TQSLYG#91</CorrelationID>
    <VersionNumber>21.3</VersionNumber>
</PayloadAttributes>
</IATA_ServiceListRS>

```

Table 26 Use Case 1 - ServiceListRS

## Use Case 2 - Prime booking flow - Catalog requested for a selection of passengers and a selection of segment

### Use Case Description

Before issuance of the ticket, the catalogue of services is requested for a selection of passengers present in the offer. You can find below an example of request for one passenger selected for a given offer, on a specific segment.

### Pre-conditions

The AirShopping transaction has been successfully run and at least one valid offer with at least one mandatory offer item is stored.

```

<IATA_ServiceListRQ>
  <DistributionChain>
    <DistributionChainLink>
      <Ordinal>0</Ordinal>
      <OrgRole>Seller</OrgRole>
      <ParticipatingOrg>
        <OrgID>12457896</OrgID>
      </ParticipatingOrg>
    </DistributionChainLink>
    <DistributionChainLink>
      <Ordinal>1</Ordinal>
      <OrgRole>Distributor</OrgRole>
      <ParticipatingOrg>
        <OrgID>1A</OrgID>
      </ParticipatingOrg>
    </DistributionChainLink>
    <DistributionChainLink>
      <Ordinal>2</Ordinal>
      <OrgRole>Carrier</OrgRole>
      <ParticipatingOrg>
        <OrgID>6X</OrgID>
      </ParticipatingOrg>
    </DistributionChainLink>
  </DistributionChain>
  <PayloadAttributes>
    <VersionNumber>21.3</VersionNumber>
  </PayloadAttributes>
  <Request>
    <ServiceListCoreRequest>
      <OfferRequest>
        <Offer>
          <OfferID>8s5fawhdbsejfhsjdcu7eyfhj</OfferID>
          <OfferItem>
            <OfferItemID>8s5fawhdbsejfhsjdcu7eyfhj-1</OfferItemID>
            <PaxRefID>PAX1</PaxRefID>
            <PaxSegmentRefID>SEG8</PaxSegmentRefID>
            <Service>
              <ServiceID>1</ServiceID>
            </Service>
          </OfferItem>
          <OwnerCode>6X</OwnerCode>
        </Offer>
      </OfferRequest>
    </ServiceListCoreRequest>
  </Request>
</IATA_ServiceListRQ>

```

Table 27 Use Case 2 - ServiceListRQ



```

<IATA_ServiceListRS>
  <Response>
    <ALaCarteOffer>
      <OfferID>8s5fawhdbsejfhsjdcu7eyfhj</OfferID>
      <OfferItem>
        <Eligibility>
          <OfferFlightAssociations>
            <PaxSegmentReferences>
              <PaxSegmentRefID>SEG8</PaxSegmentRefID>
            </PaxSegmentReferences>
          </OfferFlightAssociations>
          <PaxRefID>PAX1</PaxRefID>
        </Eligibility>
        <OfferItemID>I8ahxejdsfejnr7nfjn_ifuehjfvdnx</OfferItemID>
        <Service>
          <ServiceDefinitionRefID>SRV1</ServiceDefinitionRefID>
          <ServiceID>1</ServiceID>
        </Service>
        <UnitPrice>
          <BaseAmount CurCode="EUR">101.63</BaseAmount>
          <TaxSummary>
            <TotalTaxAmount CurCode="EUR">0.00</TotalTaxAmount>
          </TaxSummary>
          <TotalAmount CurCode="EUR">101.63</TotalAmount>
        </UnitPrice>
      </OfferItem>
      <OwnerCode>6X</OwnerCode>
    </ALaCarteOffer>
    <DataLists>
      <DatedMarketingSegmentList>
        <DatedMarketingSegment>
          <Arrival>
            <AircraftScheduledDateTime>2022-12-
03T12:05:00</AircraftScheduledDateTime>
            <IATA_LocationCode>NCE</IATA_LocationCode>
          </Arrival>
          <CarrierDesigCode>6X</CarrierDesigCode>
          <CarrierName>AMADEUS SIX</CarrierName>
          <DatedMarketingSegmentId>DMS1</DatedMarketingSegmentId>
          <DatedOperatingSegmentRefId>DOS1</DatedOperatingSegmentRef
Id>
          <Dep>
            <AircraftScheduledDateTime>2022-12-
03T10:05:00</AircraftScheduledDateTime>
            <IATA_LocationCode>LHR</IATA_LocationCode>
          </Dep>
          <MarketingCarrierFlightNumberText>9876</MarketingCarrierFl
ightNumberText>
        </DatedMarketingSegment>
      </DatedMarketingSegmentList>
      <DatedOperatingSegmentList>
        <DatedOperatingSegment>
          <CarrierDesigCode>6X</CarrierDesigCode>

```

```

        <CarrierName>AMADEUS SIX</CarrierName>
        <DatedOperatingSegmentId>DOS1</DatedOperatingSegmentId>
        <SecureFlightInd>>false</SecureFlightInd>
    </DatedOperatingSegment>
</DatedOperatingSegmentList>
<PaxJourneyList>
    <PaxJourney>
        <Duration>PT1H0M</Duration>
        <PaxJourneyID>FLT1</PaxJourneyID>
        <PaxSegmentRefID>SEG8</PaxSegmentRefID>
    </PaxJourney>
</PaxJourneyList>
<PaxList>
    <Pax>
        <PaxID>PAX1</PaxID>
        <PTC>ADT</PTC>
    </Pax>
</PaxList>
<PaxSegmentList>
    <PaxSegment>
        <DatedMarketingSegmentRefId>DMS1</DatedMarketingSegmentRef
Id>
        <MarketingCarrierRBD_Code>D</MarketingCarrierRBD_Code>
        <PaxSegmentID>SEG8</PaxSegmentID>
    </PaxSegment>
</PaxSegmentList>
<ServiceDefinitionList>
    <ServiceDefinition>
        <Desc>
            <DescText>Chargeable</DescText>
        </Desc>
        <Desc>
            <DescText>F</DescText>
            <MarkupStyleText>Service_Type</MarkupStyleText>
        </Desc>
        <Desc>
            <DescText>01</DescText>
            <MarkupStyleText>BKM</MarkupStyleText>
        </Desc>
        <Desc>
            <DescText>BG</DescText>
            <MarkupStyleText>Group</MarkupStyleText>
        </Desc>
        <Name>EXCESS BAG 23KG</Name>
        <OwnerCode>6X</OwnerCode>
        <RFIC>C</RFIC>
        <RFISC>N01</RFISC>
        <ServiceCode>XBAG</ServiceCode>
        <ServiceDefinitionID>SRV1</ServiceDefinitionID>
    </ServiceDefinition>
</ServiceDefinitionList>
</DataLists>
</Response>

```

```

<PayloadAttributes>
  <CorrelationID>WGLFRUXG3A1S1VGM#TQSLYG#91</CorrelationID>
  <VersionNumber>21.3</VersionNumber>
</PayloadAttributes>
</IATA_ServiceListRS>

```

Table 28 Use Case 2 - ServiceListRS

## Use Case 3 - Prime booking flow, Catalog for multipax services

### Use Case Description

The example shows the multipax situation with free and chargeable services (ancillaries) from offer

The query is the classical one :all the services are automatically returned by the catalog in the response.

```

<IATA_ServiceListRQ>
  <DistributionChain>
    <DistributionChainLink>
      <Ordinal>0</Ordinal>
      <OrgRole>Seller</OrgRole>
      <ParticipatingOrg>
        <OrgID>12457896</OrgID>
      </ParticipatingOrg>
    </DistributionChainLink>
    <DistributionChainLink>
      <Ordinal>1</Ordinal>
      <OrgRole>Distributor</OrgRole>
      <ParticipatingOrg>
        <OrgID>1A</OrgID>
      </ParticipatingOrg>
    </DistributionChainLink>
    <DistributionChainLink>
      <Ordinal>2</Ordinal>
      <OrgRole>Carrier</OrgRole>
      <ParticipatingOrg>
        <OrgID>6X</OrgID>
      </ParticipatingOrg>
    </DistributionChainLink>
  </DistributionChain>
  <POS>
    <Country>
      <CountryCode>FR</CountryCode>
    </Country>
  </POS>
  <Request>
    <Pax>
      <PaxID>PAX1</PaxID>
      <PTC>ADT</PTC>
    </Pax>
    <Pax>
      <PaxID>PAX3</PaxID>
      <PTC>ADT</PTC>
    </Pax>
    <Pax>
      <PaxID>PAX2</PaxID>
      <PTC>ADT</PTC>
    </Pax>
    <ServiceListCoreRequest>
      <OfferRequest>
        <Offer>
          <OfferID>I8CHSEGFgdsygfhAxsyfbsj_eygfsn</OfferID>
          <OfferItem>
            <OfferItemID>I8CHSEGFgdsygfhAxsyfbsj_eygfsn-
288</OfferItemID>
            <PaxRefID>PAX1</PaxRefID>
            <PaxRefID>PAX2</PaxRefID>
            <PaxRefID>PAX3</PaxRefID>
            <Service>

```

```

        <ServiceID>1</ServiceID>
      </Service>
    </OfferItem>
    <OwnerCode>6X</OwnerCode>
  </Offer>
</OfferRequest>
</ServiceListCoreRequest>
</Request>
</IATA_ServiceListRQ>

```

Table 29 Use Case 3 -ServiceListRQ

```

<IATA_ServiceListRS>
  <Response>
    <ALaCarteOffer>
      <OfferID>I8CHSEGFgdsygfHAXsyfbsj_eygfsn</OfferID>
      <OfferItem>
        <Eligibility>
          <OfferFlightAssociations>
            <PaxSegmentReferences>
              <PaxSegmentRefID>SEG3</PaxSegmentRefID>
            </PaxSegmentReferences>
          </OfferFlightAssociations>
          <PaxRefID>PAX2</PaxRefID>
        </Eligibility>
        <OfferItemID>Bubjchesuhfksdjgis9rvks</OfferItemID>
        <Service>
          <ServiceDefinitionRefID>SRV56</ServiceDefinitionRefID>
          <ServiceID>1</ServiceID>
        </Service>
        <UnitPrice>
          <BaseAmount CurCode="EUR">13.00</BaseAmount>
          <TaxSummary>
            <TotalTaxAmount CurCode="EUR">0.00</TotalTaxAmount>
          </TaxSummary>
          <TotalAmount CurCode="EUR">13.00</TotalAmount>
        </UnitPrice>
      </OfferItem>
      <OfferItem>
        <Eligibility>
          <OfferFlightAssociations>
            <PaxSegmentReferences>
              <PaxSegmentRefID>SEG3</PaxSegmentRefID>
            </PaxSegmentReferences>
          </OfferFlightAssociations>
          <PaxRefID>PAX1</PaxRefID>
        </Eligibility>
        <OfferItemID>Mu8tWFHDJtfsdnbghbdjf_cre7ter9hgbd</OfferItemID>
        <Service>
          <ServiceDefinitionRefID>SRV76</ServiceDefinitionRefID>
          <ServiceID>1</ServiceID>
        </Service>
        <UnitPrice>
          <TotalAmount>0</TotalAmount>
        </UnitPrice>
      </OfferItem>
      <OwnerCode>6X</OwnerCode>
    </ALaCarteOffer>
    <DataLists>
      <DatedMarketingSegmentList>
        <DatedMarketingSegment>
          <Arrival>
            <AircraftScheduledDateTime>2022-11-
22T09:00:00</AircraftScheduledDateTime>
            <IATA_LocationCode>NCE</IATA_LocationCode>
          </Arrival>
        </DatedMarketingSegment>
      </DatedMarketingSegmentList>
    </DataLists>
  </Response>
</IATA_ServiceListRS>

```

```

        </Arrival>
        <CarrierDesigCode>6X</CarrierDesigCode>
        <CarrierName>AMADEUS SIX</CarrierName>
        <DatedMarketingSegmentId>DMS1</DatedMarketingSegmentId>

<DatedOperatingSegmentRefId>DOS1</DatedOperatingSegmentRefId>
    <Dep>
        <AircraftScheduledDateTime>2022-11-
22T07:45:00</AircraftScheduledDateTime>
        <IATA_LocationCode>LHR</IATA_LocationCode>
    </Dep>

<MarketingCarrierFlightNumberText>9876</MarketingCarrierFlightNumberText>
    </DatedMarketingSegment>
</DatedMarketingSegmentList>
<DatedOperatingSegmentList>
    <DatedOperatingSegment>
        <CarrierDesigCode>6X</CarrierDesigCode>
        <CarrierName>AMADEUS SIX</CarrierName>
        <DatedOperatingSegmentId>DOS1</DatedOperatingSegmentId>
        <SecureFlightInd>>false</SecureFlightInd>
    </DatedOperatingSegment>
</DatedOperatingSegmentList>
<PaxJourneyList>
    <PaxJourney>
        <Duration>PT0H15M</Duration>
        <PaxJourneyID>FLT1</PaxJourneyID>
        <PaxSegmentRefID>SEG3</PaxSegmentRefID>
    </PaxJourney>
</PaxJourneyList>
<PaxList>
    <Pax>
        <PaxID>PAX1</PaxID>
        <PTC>ADT</PTC>
    </Pax>
    <Pax>
        <PaxID>PAX2</PaxID>
        <PTC>ADT</PTC>
    </Pax>
    <Pax>
        <PaxID>PAX3</PaxID>
        <PTC>ADT</PTC>
    </Pax>
</PaxList>
<PaxSegmentList>
    <PaxSegment>

<DatedMarketingSegmentRefId>DMS1</DatedMarketingSegmentRefId>
    <MarketingCarrierRBD_Code>D</MarketingCarrierRBD_Code>
    <PaxSegmentID>SEG3</PaxSegmentID>
    </PaxSegment>
</PaxSegmentList>
<ServiceDefinitionList>

```

```

<ServiceDefinition>
  <BookingInstructions>
    <MethodText>%FTXT%</MethodText>
    <OSI_Text>FTXT</OSI_Text>
    <OSI_Text>[-\s/0-9A-Z]{1,50}</OSI_Text>
    <SpecialService>
      <Qty>1</Qty>
    </SpecialService>
  </BookingInstructions>
  <Desc>
    <DescText>Chargeable</DescText>
  </Desc>
  <Desc>
    <DescText>F</DescText>
    <MarkupStyleText>Service_Type</MarkupStyleText>
  </Desc>
  <Desc>
    <DescText>01</DescText>
    <MarkupStyleText>BKM</MarkupStyleText>
  </Desc>
  <Desc>
    <DescText>UN</DescText>
    <MarkupStyleText>Group</MarkupStyleText>
  </Desc>
  <Desc>
    <DescText>MR</DescText>
    <MarkupStyleText>Subgroup</MarkupStyleText>
  </Desc>
  <Name>UNACCOMPANIED MINOR</Name>
  <OwnerCode>6X</OwnerCode>
  <RFIC>E</RFIC>
  <RFISC>0BH</RFISC>
  <ServiceCode>UMNR</ServiceCode>
  <ServiceDefinitionID>SRV56</ServiceDefinitionID>
</ServiceDefinition>
<ServiceDefinition>
  <BookingInstructions>
    <SpecialService>
      <Qty>1</Qty>
    </SpecialService>
  </BookingInstructions>
  <Desc>
    <DescText>Free</DescText>
  </Desc>
  <Desc>
    <DescText>MEAL</DescText>
    <MarkupStyleText>Category_Free</MarkupStyleText>
  </Desc>
  <Name>VEGETARIAN VEGAN MEAL REQUEST</Name>
  <OwnerCode>6X</OwnerCode>
  <ServiceCode>BBML</ServiceCode>
  <ServiceDefinitionID>SRV76</ServiceDefinitionID>
</ServiceDefinition>

```



```

        </ServiceDefinitionList>
    </DataLists>
</Response>
<PayloadAttributes>
    <CorrelationID>WGLFRUXG3A1S1VGM#TQSLYG#91</CorrelationID>
    <VersionNumber>21.3</VersionNumber>
</PayloadAttributes>
</IATA_ServiceListRS>

```

Table 30 Use Case 3 - ServiceListRS

## Use Case 4 - Prime booking flow, Catalog for pack of services and booking instructions

### Use Case Description

The example shows the pack of services and booking instructions with free and chargeable services (ancillaries) from offer.

### Pre-conditions

The AirShopping transaction has been successfully run and at least one valid offer with at least one mandatory offer item is stored.

```

<IATA_ServiceListRQ>
  <DistributionChain>
    <DistributionChainLink>
      <Ordinal>0</Ordinal>
      <OrgRole>Seller</OrgRole>
      <ParticipatingOrg>
        <OrgID>12457896</OrgID>
      </ParticipatingOrg>
    </DistributionChainLink>
    <DistributionChainLink>
      <Ordinal>1</Ordinal>
      <OrgRole>Distributor</OrgRole>
      <ParticipatingOrg>
        <OrgID>6X</OrgID>
      </ParticipatingOrg>
    </DistributionChainLink>
  </DistributionChain>
  <POS>
    <Country>
      <CountryCode>FR</CountryCode>
    </Country>
  </POS>
  <Request>
    <ServiceListCoreRequest>
      <OfferRequest>
        <Offer>
          <OfferID>6sxawfbjjerhf8ehGFYgdhabvudjf_rufhjsd</OfferID>
          <OwnerCode>6X</OwnerCode>
        </Offer>
      </OfferRequest>
    </ServiceListCoreRequest>
  </Request>
</IATA_ServiceListRQ>

```

Table 31 Use Case 4 - ServiceListRQ

```

<IATA_ServiceListRS>
  <Response>
    <ALaCarteOffer>
      <OfferID>6sxawfbjjerhf8ehGFYgdhabvudjfrufhjsd</OfferID>
      <OfferItem>
        <Eligibility>
          <OfferFlightAssociations>
            <PaxSegmentReferences>
              <PaxSegmentRefID>SEG3</PaxSegmentRefID>
            </PaxSegmentReferences>
          </OfferFlightAssociations>
          <PaxRefID>PAX1</PaxRefID>
        </Eligibility>
        <OfferItemID>6bsnawft7wbJDTbdyayHvchdbf</OfferItemID>
        <Service>
          <ServiceDefinitionRefID>SRV1</ServiceDefinitionRefID>
          <ServiceID>1</ServiceID>
        </Service>
        <UnitPrice>
          <BaseAmount CurCode="EUR">99.30</BaseAmount>
          <TaxSummary>
            <TotalTaxAmount CurCode="EUR">5.00</TotalTaxAmount>
          </TaxSummary>
          <TotalAmount CurCode="EUR">104.30</TotalAmount>
        </UnitPrice>
      </OfferItem>
      <OfferItem>
        <Eligibility>
          <OfferFlightAssociations>
            <PaxSegmentReferences>
              <PaxSegmentRefID>SEG3</PaxSegmentRefID>
            </PaxSegmentReferences>
          </OfferFlightAssociations>
          <PaxRefID>PAX2</PaxRefID>
        </Eligibility>
        <OfferItemID>0lofydjfhes8fhejjdbg</OfferItemID>
        <Service>
          <ServiceDefinitionRefID>SRV2</ServiceDefinitionRefID>
          <ServiceID>1</ServiceID>
        </Service>
        <UnitPrice>
          <BaseAmount CurCode="EUR">99.30</BaseAmount>
          <TaxSummary>
            <TotalTaxAmount CurCode="EUR">5.00</TotalTaxAmount>
          </TaxSummary>
          <TotalAmount CurCode="EUR">104.30</TotalAmount>
        </UnitPrice>
      </OfferItem>
      <OfferItem>
        <Eligibility>
          <OfferFlightAssociations>
            <PaxSegmentReferences>
              <PaxSegmentRefID>SEG3</PaxSegmentRefID>
            </PaxSegmentReferences>
          </OfferFlightAssociations>
        </Eligibility>
      </OfferItem>
    </ALaCarteOffer>
  </Response>
</IATA_ServiceListRS>

```

```

        </PaxSegmentReferences>
    </OfferFlightAssociations>
    <PaxRefID>PAX1</PaxRefID>
</Eligibility>
<OfferItemID>P0ektgd8hjdhg</OfferItemID>
<Service>
    <ServiceDefinitionRefID>SRV16</ServiceDefinitionRefID>
    <ServiceID>1</ServiceID>
</Service>
<UnitPrice>
    <BaseAmount CurCode="EUR">124.10</BaseAmount>
    <TaxSummary>
        <TotalTaxAmount CurCode="EUR">0.00</TotalTaxAmount>
    </TaxSummary>
    <TotalAmount CurCode="EUR">124.10</TotalAmount>
</UnitPrice>
</OfferItem>
    <OwnerCode>6X</OwnerCode>
</ALaCarteOffer>
<DataLists>
    <BaggageAllowanceList>
        <BaggageAllowance>
            <ApplicablePartyText>Traveler</ApplicablePartyText>
            <BaggageAllowanceID>CBA1</BaggageAllowanceID>
            <DescText>Applied per 5 kilos</DescText>
            <TypeCode>CheckedBag</TypeCode>
            <WeightAllowance>
                <MaximumWeightMeasure>5</MaximumWeightMeasure>
                <WeightUnitOfMeasurement>KGM</WeightUnitOfMeasurement>
            </WeightAllowance>
        </BaggageAllowance>
        <BaggageAllowance>
            <ApplicablePartyText>Traveler</ApplicablePartyText>
            <BaggageAllowanceID>CBA2</BaggageAllowanceID>
            <DescText>Applied per 5 kilos</DescText>
            <TypeCode>CheckedBag</TypeCode>
            <WeightAllowance>
                <MaximumWeightMeasure>10</MaximumWeightMeasure>
                <WeightUnitOfMeasurement>KGM</WeightUnitOfMeasurement>
            </WeightAllowance>
        </BaggageAllowance>
    </BaggageAllowanceList>
    <DatedMarketingSegmentList>
        <DatedMarketingSegment>
            <Arrival>
                <AircraftScheduledDateTime>2023-04-
30T13:05:00</AircraftScheduledDateTime>
                <IATA_LocationCode>LHR</IATA_LocationCode>
            </Arrival>
            <CarrierDesigCode>6X</CarrierDesigCode>
            <CarrierName>6X</CarrierName>
            <DatedMarketingSegmentId>DMS1</DatedMarketingSegmentId>
        </DatedMarketingSegment>
    </DatedMarketingSegmentList>
</DataLists>

```

```

<DatedOperatingSegmentRefId>DOS1</DatedOperatingSegmentRefId>
  <Dep>
    <AircraftScheduledDateTime>2023-04-
30T08:30:00</AircraftScheduledDateTime>
    <IATA_LocationCode>AUH</IATA_LocationCode>
  </Dep>

<MarketingCarrierFlightNumberText>191</MarketingCarrierFlightNumberText>
  </DatedMarketingSegment>
</DatedMarketingSegmentList>
<DatedOperatingSegmentList>
  <DatedOperatingSegment>
    <CarrierDesigCode>6X</CarrierDesigCode>
    <CarrierName>6X</CarrierName>
    <DatedOperatingSegmentId>DOS1</DatedOperatingSegmentId>
    <SecureFlightInd>>false</SecureFlightInd>
  </DatedOperatingSegment>
</DatedOperatingSegmentList>
<PaxJourneyList>
  <PaxJourney>
    <Duration>PT7H35M</Duration>
    <PaxJourneyID>FLT1</PaxJourneyID>
    <PaxSegmentRefID>SEG3</PaxSegmentRefID>
  </PaxJourney>
</PaxJourneyList>
<PaxList>
  <Pax>
    <PaxID>PAX1</PaxID>
    <PTC>ADT</PTC>
  </Pax>
  <Pax>
    <PaxID>PAX2</PaxID>
    <PTC>CHD</PTC>
  </Pax>
  <Pax>
    <PaxID>PAX11</PaxID>
    <PaxRefID>PAX1</PaxRefID>
    <PTC>INF</PTC>
  </Pax>
</PaxList>
<PaxSegmentList>
  <PaxSegment>

<DatedMarketingSegmentRefId>DMS1</DatedMarketingSegmentRefId>
  <MarketingCarrierRBD_Code>L</MarketingCarrierRBD_Code>
  <PaxSegmentID>SEG3</PaxSegmentID>
  </PaxSegment>
</PaxSegmentList>
<ServiceDefinitionList>
  <ServiceDefinition>
    <BookingInstructions>
      <SpecialService>

```

```

        <Qty>1</Qty>
    </SpecialService>
</BookingInstructions>
    <Desc>
        <DescText>Chargeable</DescText>
    </Desc>
    <Desc>
        <DescText>F</DescText>
        <MarkupStyleText>Service_Type</MarkupStyleText>
    </Desc>
    <Desc>
        <DescText>01</DescText>
        <MarkupStyleText>BKM</MarkupStyleText>
    </Desc>
    <Desc>
        <DescText>LG</DescText>
        <MarkupStyleText>Group</MarkupStyleText>
    </Desc>
    <Name>BUSINESS CLASS LOUNGE UP TO 4H</Name>
    <OwnerCode>6X</OwnerCode>
    <RFIC>E</RFIC>
    <RFISC>BZ2</RFISC>
    <ServiceCode>LBZA</ServiceCode>
    <ServiceDefinitionID>SRV1</ServiceDefinitionID>
</ServiceDefinition>
<ServiceDefinition>
    <BookingInstructions>
        <SpecialService>
            <Qty>1</Qty>
        </SpecialService>
    </BookingInstructions>
    <Desc>
        <DescText>Chargeable</DescText>
    </Desc>
    <Desc>
        <DescText>F</DescText>
        <MarkupStyleText>Service_Type</MarkupStyleText>
    </Desc>
    <Desc>
        <DescText>01</DescText>
        <MarkupStyleText>BKM</MarkupStyleText>
    </Desc>
    <Desc>
        <DescText>LG</DescText>
        <MarkupStyleText>Group</MarkupStyleText>
    </Desc>
    <Name>BUSINESS CLASS LOUNGE UP TO 4H</Name>
    <OwnerCode>6X</OwnerCode>
    <RFIC>E</RFIC>
    <RFISC>BZ2</RFISC>
    <ServiceCode>LBZA</ServiceCode>
    <ServiceDefinitionID>SRV2</ServiceDefinitionID>
</ServiceDefinition>

```

```

<ServiceDefinition>
  <BookingInstructions>
    <SpecialService>
      <Qty>1</Qty>
    </SpecialService>
  </BookingInstructions>
  <Desc>
    <DescText>Chargeable</DescText>
  </Desc>
  <Desc>
    <DescText>F</DescText>
    <MarkupStyleText>Service_Type</MarkupStyleText>
  </Desc>
  <Desc>
    <DescText>01</DescText>
    <MarkupStyleText>BKM</MarkupStyleText>
  </Desc>
  <Desc>
    <DescText>TS</DescText>
    <MarkupStyleText>Group</MarkupStyleText>
  </Desc>
  <Name>FAST TRACK BUNDLE</Name>
  <OwnerCode>6X</OwnerCode>
  <RFIC>D</RFIC>
  <RFISC>PSP</RFISC>
  <ServiceCode>PKSP</ServiceCode>
  <ServiceDefinitionAssociation>
    <ServiceBundle>
      <MaximumServiceQty>3</MaximumServiceQty>
    </ServiceBundle>
  </ServiceDefinitionAssociation>
</ServiceDefinitionRefID>SRV16_1</ServiceDefinitionRefID>
<ServiceDefinitionRefID>SRV16_2</ServiceDefinitionRefID>
<ServiceDefinitionRefID>SRV16_3</ServiceDefinitionRefID>
  </ServiceBundle>
</ServiceDefinitionAssociation>
<ServiceDefinitionID>SRV16</ServiceDefinitionID>
</ServiceDefinition>
<ServiceDefinition>
  <BookingInstructions>
    <SpecialService>
      <Qty>1</Qty>
    </SpecialService>
  </BookingInstructions>
  <Desc>
    <DescText>Chargeable</DescText>
  </Desc>
  <Desc>
    <DescText>F</DescText>
    <MarkupStyleText>Service_Type</MarkupStyleText>
  </Desc>
  <Desc>

```

```

        <DescText>01</DescText>
        <MarkupStyleText>BKM</MarkupStyleText>
    </Desc>
    <Desc>
        <DescText>TS</DescText>
        <MarkupStyleText>Group</MarkupStyleText>
    </Desc>
    <Name>FAST TRACK BUNDLE</Name>
    <OwnerCode>6X</OwnerCode>
    <RFIC>D</RFIC>
    <RFISC>PSP</RFISC>
    <ServiceCode>PKSP</ServiceCode>
    <ServiceDefinitionAssociation>
        <ServiceBundle>
            <MaximumServiceQty>3</MaximumServiceQty>

<ServiceDefinitionRefID>SRV16_1</ServiceDefinitionRefID>

<ServiceDefinitionRefID>SRV16_2</ServiceDefinitionRefID>

<ServiceDefinitionRefID>SRV16_3</ServiceDefinitionRefID>
    </ServiceBundle>
    </ServiceDefinitionAssociation>
    <ServiceDefinitionID>SRV17</ServiceDefinitionID>
</ServiceDefinition>
<ServiceDefinition>
    <BookingInstructions>
        <SpecialService>
            <Qty>1</Qty>
        </SpecialService>
    </BookingInstructions>
    <Desc>
        <DescText>Chargeable</DescText>
    </Desc>
    <Desc>
        <DescText>F</DescText>
        <MarkupStyleText>Service_Type</MarkupStyleText>
    </Desc>
    <Desc>
        <DescText>01</DescText>
        <MarkupStyleText>BKM</MarkupStyleText>
    </Desc>
    <Desc>
        <DescText>TS</DescText>
        <MarkupStyleText>Group</MarkupStyleText>
    </Desc>
    <Desc>
        <DescText>PO</DescText>
        <MarkupStyleText>Subgroup</MarkupStyleText>
    </Desc>
    <Name>PRIORITY ACCESS</Name>
    <OwnerCode>6X</OwnerCode>
    <RFIC>E</RFIC>

```



```

    <RFISC>03P</RFISC>
    <ServiceCode>PRIO</ServiceCode>
    <ServiceDefinitionID>SRV18</ServiceDefinitionID>
</ServiceDefinition>
<ServiceDefinition>
  <BookingInstructions>
    <SpecialService>
      <Qty>1</Qty>
    </SpecialService>
  </BookingInstructions>
  <Desc>
    <DescText>Chargeable</DescText>
  </Desc>
  <Desc>
    <DescText>F</DescText>
    <MarkupStyleText>Service_Type</MarkupStyleText>
  </Desc>
  <Desc>
    <DescText>01</DescText>
    <MarkupStyleText>BKM</MarkupStyleText>
  </Desc>
  <Desc>
    <DescText>TS</DescText>
    <MarkupStyleText>Group</MarkupStyleText>
  </Desc>
  <Desc>
    <DescText>PO</DescText>
    <MarkupStyleText>Subgroup</MarkupStyleText>
  </Desc>
  <Name>PRIORITY ACCESS</Name>
  <OwnerCode>6X</OwnerCode>
  <RFIC>E</RFIC>
  <RFISC>03P</RFISC>
  <ServiceCode>PRIO</ServiceCode>
  <ServiceDefinitionID>SRV16_1</ServiceDefinitionID>
</ServiceDefinition>
<ServiceDefinition>
  <Desc>
    <DescText>Chargeable</DescText>
  </Desc>
  <Desc>
    <DescText>01</DescText>
    <MarkupStyleText>BKM</MarkupStyleText>
  </Desc>
  <Desc>
    <DescText>I</DescText>
    <MarkupStyleText>Description1</MarkupStyleText>
  </Desc>
  <Name>PACK SUB SERVICE</Name>
  <OwnerCode>6X</OwnerCode>
  <ServiceCode>PKSK</ServiceCode>
  <ServiceDefinitionID>SRV16_2</ServiceDefinitionID>
</ServiceDefinition>

```

```

    <ServiceDefinition>
      <Desc>
        <DescText>Chargeable</DescText>
      </Desc>
      <Desc>
        <DescText>F</DescText>
        <MarkupStyleText>Service_Type</MarkupStyleText>
      </Desc>
      <Desc>
        <DescText>01</DescText>
        <MarkupStyleText>BKM</MarkupStyleText>
      </Desc>
      <Desc>
        <DescText>SA</DescText>
        <MarkupStyleText>Group</MarkupStyleText>
      </Desc>
      <Name>PACK SUB SERVICE</Name>
      <OwnerCode>6X</OwnerCode>
      <RFIC>A</RFIC>
      <RFISC>0B5</RFISC>
      <ServiceDefinitionID>SRV16_3</ServiceDefinitionID>
    </ServiceDefinition>
  </ServiceDefinitionList>
</DataLists>
</Response>
<PayloadAttributes>
  <CorrelationID>WGLFRUXG3A1S1VGM#TQSLYG#91</CorrelationID>
  <VersionNumber>21.3</VersionNumber>
</PayloadAttributes>
</IATA_ServiceListRS>

```

Table 32 Use Case 4 - ServiceListRS

## Use Case 5 - Post-sale flow, ServiceList from Order for MultiLeg

### Use Case Description

Through the NDC flow, a flight has been booked and a ticket issued for one passenger. After issuance of the ticket, a catalog is requested for the only passenger in the PNR, using the orderID. Simple request for one Pax.

## Pre-conditions

The PNR and the OrderID exist.

```

<IATA_ServiceListRQ>
  <DistributionChain>
    <DistributionChainLink>
      <Ordinal>0</Ordinal>
      <OrgRole>Seller</OrgRole>
      <ParticipatingOrg>
        <OrgID>12457896</OrgID>
      </ParticipatingOrg>
    </DistributionChainLink>
    <DistributionChainLink>
      <Ordinal>1</Ordinal>
      <OrgRole>Distributor</OrgRole>
      <ParticipatingOrg>
        <OrgID>1A</OrgID>
      </ParticipatingOrg>
    </DistributionChainLink>
  </DistributionChain>
  <POS >
    <Country >
      <CountryCode>FR</CountryCode>
    </Country>
  </POS>
  <Request>
    <ServiceListCoreRequest>
      <OrderRequest>
        <Order>
          <OrderID>6X172ASDFG12</OrderID>
          <OwnerCode>6x</OwnerCode>
          <cns:PaxRefID>PAX2</cns:PaxRefID>
        </Order>
      </OrderRequest>
    </ServiceListCoreRequest>
  </Request>
</IATA_ServiceListRQ>

```

Table 33 Use Case 5 - ServiceListRQ

```

<IATA_ServiceListRS
xmlns="http://www.iata.org/IATA/2015/EASD/00/IATA_OffersAndOrdersCommonTypes"
xmlns:ns2="http://www.w3.org/2000/09/xmldsig#"
xmlns:ns3="http://www.iata.org/IATA/2015/EASD/00/AMA_AugmentationPoint"
xmlns:ns4="http://www.iata.org/IATA/2015/EASD/00/IATA_OffersAndOrdersMessage">
  <Response>
    <ALaCarteOffer>
      <OfferID>cmFuZG9tbmVtYmVy</OfferID>
      <OfferItem>
        <Eligibility>
          <OfferFlightAssociations>
            <PaxSegmentReferences>
              <PaxSegmentRefID>SEG1</PaxSegmentRefID>
              <PaxSegmentRefID>SEG2</PaxSegmentRefID>
            </PaxSegmentReferences>
          </OfferFlightAssociations>
          <PaxRefID>PAX2</PaxRefID>
        </Eligibility>
        <OfferItemID>Y21GdVpHOXRib1Z0WW1WeWY</OfferItemID>
        <RichMedia>
          <ResourceURI>http://www.6X.com/sabr5/images/MP/bag.jpg</ResourceURI>
        </RichMedia>
        <Service>
          <ServiceDefinitionRefID>SRV1</ServiceDefinitionRefID>
          <ServiceID>1</ServiceID>
        </Service>
        <UnitPrice>
          <BaseAmount CurCode="EUR">14.92</BaseAmount>
          <TaxSummary>
            <TotalTaxAmount CurCode="EUR">0.00</TotalTaxAmount>
          </TaxSummary>
          <TotalAmount CurCode="EUR">14.92</TotalAmount>
        </UnitPrice>
      </OfferItem>
      <OfferItem>
        <Eligibility>
          <OfferFlightAssociations>
            <PaxSegmentReferences>
              <PaxSegmentRefID>SEG1</PaxSegmentRefID>
            </PaxSegmentReferences>
          </OfferFlightAssociations>
          <PaxRefID>PAX2</PaxRefID>
        </Eligibility>
        <OfferItemID>Y21GdVpHOXRib1Z0WW1WeQ</OfferItemID>
        <RichMedia>
          <ResourceURI>http://www.6X.com/sabr5/images/MP/bag.jpg</ResourceURI>
        </RichMedia>
        <Service>
          <ServiceDefinitionRefID>SRV2</ServiceDefinitionRefID>
          <ServiceID>1</ServiceID>
        </Service>
      </OfferItem>
    </ALaCarteOffer>
  </Response>
</IATA_ServiceListRS>

```

```

        <UnitPrice>
          <BaseAmount CurCode="EUR">7.46</BaseAmount>
          <TaxSummary>
            <TotalTaxAmount CurCode="EUR">0.00</TotalTaxAmount>
          </TaxSummary>
          <TotalAmount CurCode="EUR">7.46</TotalAmount>
        </UnitPrice>
      </OfferItem>
      <OwnerCode>6X</OwnerCode>
    </ALaCarteOffer>
    <DataLists>
      <BaggageAllowanceList>
        <BaggageAllowance>
          <ApplicablePartyText>Traveler</ApplicablePartyText>
          <BaggageAllowanceID>CBA1</BaggageAllowanceID>
          <TypeCode>CheckedBag</TypeCode>
          <WeightAllowance>
            <MaximumWeightMeasure>1</MaximumWeightMeasure>
            <WeightUnitOfMeasurement>KGM</WeightUnitOfMeasurement>
          </WeightAllowance>
        </BaggageAllowance>
      </BaggageAllowanceList>
      <DatedMarketingSegmentList>
        <DatedMarketingSegment>
          <Arrival>
            <AircraftScheduledDateTime>2024-05-
03T13:05:00</AircraftScheduledDateTime>
            <IATA_LocationCode>SIN</IATA_LocationCode>
          </Arrival>
          <CarrierDesigCode>6X</CarrierDesigCode>
          <CarrierName>SIX X</CarrierName>
          <DatedMarketingSegmentId>DMS1</DatedMarketingSegmentId>
        </DatedMarketingSegment>
        <DatedOperatingSegmentRefId>DOS1</DatedOperatingSegmentRefId>
        <Dep>
          <AircraftScheduledDateTime>2024-05-
03T09:40:00</AircraftScheduledDateTime>
          <IATA_LocationCode>BKK</IATA_LocationCode>
        </Dep>
      </DatedMarketingSegmentList>
      <MarketingCarrierFlightNumberText>123</MarketingCarrierFlightNumberText>
    </DatedMarketingSegment>
    <DatedMarketingSegment>
      <Arrival>
        <AircraftScheduledDateTime>2024-05-
12T17:25:00</AircraftScheduledDateTime>
        <IATA_LocationCode>BKK</IATA_LocationCode>
      </Arrival>
      <CarrierDesigCode>6X</CarrierDesigCode>
      <CarrierName>SIX X</CarrierName>
      <DatedMarketingSegmentId>DMS2</DatedMarketingSegmentId>
    </DatedMarketingSegment>
    <DatedOperatingSegmentRefId>DOS2</DatedOperatingSegmentRefId>
  </DataLists>

```

```

        <Dep>
          <AircraftScheduledDateTime>2024-05-
12T16:00:00</AircraftScheduledDateTime>
          <IATA_LocationCode>SIN</IATA_LocationCode>
        </Dep>

<MarketingCarrierFlightNumberText>456</MarketingCarrierFlightNumberText>
  </DatedMarketingSegment>
</DatedMarketingSegmentList>
  <DatedOperatingLegList>
    <DatedOperatingLeg>
      <Arrival>
        <AircraftScheduledDateTime>2024-05-
03T13:05:00</AircraftScheduledDateTime>
        <IATA_LocationCode>SIN</IATA_LocationCode>
      </Arrival>
      <DatedOperatingLegID>LEG1</DatedOperatingLegID>
      <Dep>
        <AircraftScheduledDateTime>2024-05-
03T09:40:00</AircraftScheduledDateTime>
        <IATA_LocationCode>BKK</IATA_LocationCode>
      </Dep>
      <IATA_AircraftType>
        <IATA_AircraftTypeCode>787</IATA_AircraftTypeCode>
      </IATA_AircraftType>
    </DatedOperatingLeg>
  </DatedOperatingLeg>
    <Arrival>
      <AircraftScheduledDateTime>2024-05-
12T17:25:00</AircraftScheduledDateTime>
      <IATA_LocationCode>BKK</IATA_LocationCode>
    </Arrival>
    <DatedOperatingLegID>LEG2</DatedOperatingLegID>
    <Dep>
      <AircraftScheduledDateTime>2024-05-
12T16:00:00</AircraftScheduledDateTime>
      <IATA_LocationCode>SIN</IATA_LocationCode>
    </Dep>
    <IATA_AircraftType>
      <IATA_AircraftTypeCode>787</IATA_AircraftTypeCode>
    </IATA_AircraftType>
  </DatedOperatingLeg>
</DatedOperatingLegList>
<DatedOperatingSegmentList>
  <DatedOperatingSegment>
    <CarrierDesigCode>6X</CarrierDesigCode>
    <CarrierName>SIX X</CarrierName>
    <DatedOperatingLegRefID>LEG1</DatedOperatingLegRefID>
    <DatedOperatingSegmentId>DOS1</DatedOperatingSegmentId>
    <SecureFlightInd>false</SecureFlightInd>
  </DatedOperatingSegment>
  <DatedOperatingSegment>
    <CarrierDesigCode>6X</CarrierDesigCode>

```

```

        <CarrierName>SIX X</CarrierName>
        <DatedOperatingLegRefID>LEG2</DatedOperatingLegRefID>
        <DatedOperatingSegmentId>DOS2</DatedOperatingSegmentId>
        <SecureFlightInd>>false</SecureFlightInd>
    </DatedOperatingSegment>
</DatedOperatingSegmentList>
<PaxJourneyList>
    <PaxJourney>
        <Duration>PT2H25M</Duration>
        <PaxJourneyID>FLT1</PaxJourneyID>
        <PaxSegmentRefID>SEG1</PaxSegmentRefID>
    </PaxJourney>
    <PaxJourney>
        <Duration>PT2H25M</Duration>
        <PaxJourneyID>FLT2</PaxJourneyID>
        <PaxSegmentRefID>SEG2</PaxSegmentRefID>
    </PaxJourney>
</PaxJourneyList>
<PaxList>
    <Pax>
        <PaxID>PAX2</PaxID>
        <PTC>ADT</PTC>
    </Pax>
</PaxList>
<PaxSegmentList>
    <PaxSegment>

<DatedMarketingSegmentRefId>DMS1</DatedMarketingSegmentRefId>
    <MarketingCarrierRBD_Code>U</MarketingCarrierRBD_Code>
    <PaxSegmentID>SEG1</PaxSegmentID>
</PaxSegment>
<PaxSegment>

<DatedMarketingSegmentRefId>DMS2</DatedMarketingSegmentRefId>
    <MarketingCarrierRBD_Code>D</MarketingCarrierRBD_Code>
    <PaxSegmentID>SEG2</PaxSegmentID>
</PaxSegment>
</PaxSegmentList>
<ServiceDefinitionList>
    <ServiceDefinition>
        <BookingInstructions>
            <MethodText>TWB\s?%WVAL%KG</MethodText>
            <OSI_Text>WVAL</OSI_Text>
            <OSI_Text>[0-9]{1,3}</OSI_Text>
            <SpecialService>
                <Qty>1</Qty>
            </SpecialService>
        </BookingInstructions>
        <Desc>
            <DescText>Chargeable</DescText>
        </Desc>
        <Desc>
            <DescText>F</DescText>
        </Desc>
    </ServiceDefinition>
</ServiceDefinitionList>

```

```

        <MarkupStyleText>Service_Type</MarkupStyleText>
    </Desc>
    <Desc>
        <DescText>01</DescText>
        <MarkupStyleText>BKM</MarkupStyleText>
    </Desc>
    <Desc>
        <DescText>BG</DescText>
        <MarkupStyleText>Group</MarkupStyleText>
    </Desc>
    <Name>ONE KILOGRAM BAGGAGE</Name>
    <OwnerCode>6X</OwnerCode>
    <RFIC>C</RFIC>
    <RFISC>0AA</RFISC>
    <ServiceCode>XBAG</ServiceCode>
    <ServiceDefinitionAssociation>
        <BaggageAllowanceRef>

<BaggageAllowanceRefID>CBA1</BaggageAllowanceRefID>
    </BaggageAllowanceRef>
    </ServiceDefinitionAssociation>
    <ServiceDefinitionID>SRV1</ServiceDefinitionID>
</ServiceDefinition>
<ServiceDefinition>
    <BookingInstructions>
        <MethodText>TWB\s?%WVAL%KG</MethodText>
        <OSI_Text>WVAL</OSI_Text>
        <OSI_Text>[0-9]{1,3}</OSI_Text>
        <SpecialService>
            <Qty>1</Qty>
        </SpecialService>
    </BookingInstructions>
    <Desc>
        <DescText>Chargeable</DescText>
    </Desc>
    <Desc>
        <DescText>F</DescText>
        <MarkupStyleText>Service_Type</MarkupStyleText>
    </Desc>
    <Desc>
        <DescText>01</DescText>
        <MarkupStyleText>BKM</MarkupStyleText>
    </Desc>
    <Desc>
        <DescText>BG</DescText>
        <MarkupStyleText>Group</MarkupStyleText>
    </Desc>
    <Name>ONE KILOGRAM BAGGAGE</Name>
    <OwnerCode>6X</OwnerCode>
    <RFIC>C</RFIC>
    <RFISC>0AA</RFISC>
    <ServiceCode>XBAG</ServiceCode>
    <ServiceDefinitionAssociation>

```



```

        <BaggageAllowanceRef>
      <BaggageAllowanceRefID>CBA1</BaggageAllowanceRefID>
        </BaggageAllowanceRef>
        <ServiceDefinitionAssociation>
          <ServiceDefinitionID>SRV2</ServiceDefinitionID>
        </ServiceDefinition>
      </ServiceDefinitionList>
    </DataLists>
  </Response>
  <PayloadAttributes>
    <CorrelationID>$3COEZA9XHH00VGM#TQSLYG#91</CorrelationID>
    <VersionNumber>21.3</VersionNumber>
  </PayloadAttributes>
</IATA_ServiceListRS>

```

Table 34 Use Case 5 - ServiceListRS

## Use Case 6 - Post-sale flow, Catalog requested from the OrderID for the PNR full content

### Use Case Description

Through the NDC flow, a flight has been booked and a ticket issued for one passenger. After issuance of the ticket, a catalog is requested for the PNR full content (Passenger and segment) using the orderID.

### Pre-conditions

The PNR and the OrderID exist.

```

<n1:IATA_ServiceListRQ
xmlns="http://www.iata.org/IATA/2015/00/2018.1/ServiceListRQ"
xmlns:n1="http://www.iata.org/IATA/2015/EASD/00/IATA_OffersAndOrdersMessage"
xmlns:cns="http://www.iata.org/IATA/2015/EASD/00/IATA_OffersAndOrdersCommonTypes">
    <DistributionChain>
        <DistributionChainLink>
            <Ordinal>0</Ordinal>
            <OrgRole>Seller</OrgRole>
            <ParticipatingOrg>
                <OrgID>12457896</OrgID>
            </ParticipatingOrg>
        </DistributionChainLink>
        <DistributionChainLink>
            <Ordinal>1</Ordinal>
            <OrgRole>Distributor</OrgRole>
            <ParticipatingOrg>
                <OrgID>1A</OrgID>
            </ParticipatingOrg>
        </DistributionChainLink>
        <DistributionChainLink>
            <Ordinal>2</Ordinal>
            <OrgRole>Carrier</OrgRole>
            <ParticipatingOrg>
                <OrgID>6X</OrgID>
            </ParticipatingOrg>
        </DistributionChainLink>
    </DistributionChain>
    <n1:POS>
        <cns:Country>
            <cns:CountryCode>FR</cns:CountryCode>
        </cns:Country>
    </n1:POS>
    <n1:Request>
        <cns:ServiceListCoreRequest>
            <cns:OrderRequest>
                <cns:Order>
                    <cns:OrderID>6X172ABCDEF00</cns:OrderID>
                    <cns:OrderItem>
                        <cns:OrderItemID>6X172ABCDEF00_AIR-1</cns:OrderItemID>
                        <cns:OwnerCode>6X</cns:OwnerCode>
                    </cns:OrderItem>
                    <cns:OwnerCode>6X</cns:OwnerCode>
                </cns:Order>
            </cns:OrderRequest>
        </cns:ServiceListCoreRequest>
    </n1:Request>
</n1:IATA_ServiceListRQ>

```

Table 35 Use Case 6 - ServiceListRQ

```

<IATA_ServiceListRS
xmlns="http://www.iata.org/IATA/2015/EASD/00/IATA_OffersAndOrdersCommonTypes"
xmlns:ns2="http://www.w3.org/2000/09/xmldsig#"
xmlns:ns3="http://www.iata.org/IATA/2015/EASD/00/AMA_AugmentationPoint"
xmlns:ns4="http://www.iata.org/IATA/2015/EASD/00/IATA_OffersAndOrdersMessage">
  <Response>
    <ALaCarteOffer>
      <OfferID>cmFuZG9tbmVtYmVy</OfferID>
      <OfferItem>
        <Eligibility>
          <OfferFlightAssociations>
            <PaxSegmentReferences>
              <PaxSegmentRefID>SEG1</PaxSegmentRefID>
              <PaxSegmentRefID>SEG2</PaxSegmentRefID>
            </PaxSegmentReferences>
          </OfferFlightAssociations>
          <PaxRefID>PAX2</PaxRefID>
        </Eligibility>
        <OfferItemID>Y21GdVpHOXRib1Z0WW1WeWY</OfferItemID>
        <RichMedia>
          <ResourceURI>http://www.6X.com/sabr5/images/MP/bag.jpg</ResourceURI>
        </RichMedia>
        <Service>
          <ServiceDefinitionRefID>SRV1</ServiceDefinitionRefID>
          <ServiceID>1</ServiceID>
        </Service>
        <UnitPrice>
          <BaseAmount CurCode="EUR">14.92</BaseAmount>
          <TaxSummary>
            <TotalTaxAmount CurCode="EUR">0.00</TotalTaxAmount>
          </TaxSummary>
          <TotalAmount CurCode="EUR">14.92</TotalAmount>
        </UnitPrice>
      </OfferItem>
      <OfferItem>
        <Eligibility>
          <OfferFlightAssociations>
            <PaxSegmentReferences>
              <PaxSegmentRefID>SEG1</PaxSegmentRefID>
            </PaxSegmentReferences>
          </OfferFlightAssociations>
          <PaxRefID>PAX2</PaxRefID>
        </Eligibility>
        <OfferItemID>Y21GdVpHOXRib1Z0WW1WeQ</OfferItemID>
        <RichMedia>
          <ResourceURI>http://www.6X.com/sabr5/images/MP/bag.jpg</ResourceURI>
        </RichMedia>
        <Service>
          <ServiceDefinitionRefID>SRV2</ServiceDefinitionRefID>
          <ServiceID>1</ServiceID>
        </Service>
      </OfferItem>
    </ALaCarteOffer>
  </Response>
</IATA_ServiceListRS>

```

```

        <UnitPrice>
          <BaseAmount CurCode="EUR">7.46</BaseAmount>
          <TaxSummary>
            <TotalTaxAmount CurCode="EUR">0.00</TotalTaxAmount>
          </TaxSummary>
          <TotalAmount CurCode="EUR">7.46</TotalAmount>
        </UnitPrice>
      </OfferItem>
      <OwnerCode>6X</OwnerCode>
    </ALaCarteOffer>
    <DataLists>
      <BaggageAllowanceList>
        <BaggageAllowance>
          <ApplicablePartyText>Traveler</ApplicablePartyText>
          <BaggageAllowanceID>CBA1</BaggageAllowanceID>
          <TypeCode>CheckedBag</TypeCode>
          <WeightAllowance>
            <MaximumWeightMeasure>1</MaximumWeightMeasure>
            <WeightUnitOfMeasurement>KGM</WeightUnitOfMeasurement>
          </WeightAllowance>
        </BaggageAllowance>
      </BaggageAllowanceList>
      <DatedMarketingSegmentList>
        <DatedMarketingSegment>
          <Arrival>
            <AircraftScheduledDateTime>2024-05-
03T13:05:00</AircraftScheduledDateTime>
            <IATA_LocationCode>SIN</IATA_LocationCode>
          </Arrival>
          <CarrierDesigCode>6X</CarrierDesigCode>
          <CarrierName>SIX X</CarrierName>
          <DatedMarketingSegmentId>DMS1</DatedMarketingSegmentId>
        </DatedMarketingSegment>
        <DatedOperatingSegmentRefId>DOS1</DatedOperatingSegmentRefId>
        <Dep>
          <AircraftScheduledDateTime>2024-05-
03T09:40:00</AircraftScheduledDateTime>
          <IATA_LocationCode>BKK</IATA_LocationCode>
        </Dep>
      </DatedMarketingSegmentList>
      <MarketingCarrierFlightNumberText>123</MarketingCarrierFlightNumberText>
    </DatedMarketingSegment>
    <DatedMarketingSegment>
      <Arrival>
        <AircraftScheduledDateTime>2024-05-
12T17:25:00</AircraftScheduledDateTime>
        <IATA_LocationCode>BKK</IATA_LocationCode>
      </Arrival>
      <CarrierDesigCode>6X</CarrierDesigCode>
      <CarrierName>SIX X</CarrierName>
      <DatedMarketingSegmentId>DMS2</DatedMarketingSegmentId>
    </DatedMarketingSegment>
    <DatedOperatingSegmentRefId>DOS2</DatedOperatingSegmentRefId>
  </DataLists>

```

```

        <Dep>
          <AircraftScheduledDateTime>2024-05-
12T16:00:00</AircraftScheduledDateTime>
          <IATA_LocationCode>SIN</IATA_LocationCode>
        </Dep>

<MarketingCarrierFlightNumberText>456</MarketingCarrierFlightNumberText>
  </DatedMarketingSegment>
</DatedMarketingSegmentList>
  <DatedOperatingLegList>
    <DatedOperatingLeg>
      <Arrival>
        <AircraftScheduledDateTime>2024-05-
03T13:05:00</AircraftScheduledDateTime>
        <IATA_LocationCode>SIN</IATA_LocationCode>
      </Arrival>
      <DatedOperatingLegID>LEG1</DatedOperatingLegID>
      <Dep>
        <AircraftScheduledDateTime>2024-05-
03T09:40:00</AircraftScheduledDateTime>
        <IATA_LocationCode>BKK</IATA_LocationCode>
      </Dep>
      <IATA_AircraftType>
        <IATA_AircraftTypeCode>787</IATA_AircraftTypeCode>
      </IATA_AircraftType>
    </DatedOperatingLeg>
  </DatedOperatingLegList>
  <DatedOperatingLeg>
    <Arrival>
      <AircraftScheduledDateTime>2024-05-
12T17:25:00</AircraftScheduledDateTime>
      <IATA_LocationCode>BKK</IATA_LocationCode>
    </Arrival>
    <DatedOperatingLegID>LEG2</DatedOperatingLegID>
    <Dep>
      <AircraftScheduledDateTime>2024-05-
12T16:00:00</AircraftScheduledDateTime>
      <IATA_LocationCode>SIN</IATA_LocationCode>
    </Dep>
    <IATA_AircraftType>
      <IATA_AircraftTypeCode>787</IATA_AircraftTypeCode>
    </IATA_AircraftType>
  </DatedOperatingLeg>
</DatedOperatingLegList>
<DatedOperatingSegmentList>
  <DatedOperatingSegment>
    <CarrierDesigCode>6X</CarrierDesigCode>
    <CarrierName>SIX X</CarrierName>
    <DatedOperatingLegRefID>LEG1</DatedOperatingLegRefID>
    <DatedOperatingSegmentId>DOS1</DatedOperatingSegmentId>
    <SecureFlightInd>false</SecureFlightInd>
  </DatedOperatingSegment>
  <DatedOperatingSegment>
    <CarrierDesigCode>6X</CarrierDesigCode>

```

```

        <CarrierName>6X</CarrierName>
        <DatedOperatingLegRefID>LEG2</DatedOperatingLegRefID>
        <DatedOperatingSegmentId>DOS2</DatedOperatingSegmentId>
        <SecureFlightInd>>false</SecureFlightInd>
    </DatedOperatingSegment>
</DatedOperatingSegmentList>
<PaxJourneyList>
    <PaxJourney>
        <Duration>PT2H25M</Duration>
        <PaxJourneyID>FLT1</PaxJourneyID>
        <PaxSegmentRefID>SEG1</PaxSegmentRefID>
    </PaxJourney>
    <PaxJourney>
        <Duration>PT2H25M</Duration>
        <PaxJourneyID>FLT2</PaxJourneyID>
        <PaxSegmentRefID>SEG2</PaxSegmentRefID>
    </PaxJourney>
</PaxJourneyList>
<PaxList>
    <Pax>
        <PaxID>PAX2</PaxID>
        <PTC>ADT</PTC>
    </Pax>
</PaxList>
<PaxSegmentList>
    <PaxSegment>
        <DatedMarketingSegmentRefId>DMS1</DatedMarketingSegmentRefId>
        <MarketingCarrierRBD_Code>U</MarketingCarrierRBD_Code>
        <PaxSegmentID>SEG1</PaxSegmentID>
    </PaxSegment>
    <PaxSegment>
        <DatedMarketingSegmentRefId>DMS2</DatedMarketingSegmentRefId>
        <MarketingCarrierRBD_Code>D</MarketingCarrierRBD_Code>
        <PaxSegmentID>SEG2</PaxSegmentID>
    </PaxSegment>
</PaxSegmentList>
<ServiceDefinitionList>
    <ServiceDefinition>
        <BookingInstructions>
            <MethodText>TWB\s?%WVAL%KG</MethodText>
            <OSI_Text>WVAL</OSI_Text>
            <OSI_Text>[0-9]{1,3}</OSI_Text>
            <SpecialService>
                <Qty>1</Qty>
            </SpecialService>
        </BookingInstructions>
        <Desc>
            <DescText>Chargeable</DescText>
        </Desc>
        <Desc>
            <DescText>F</DescText>
        </Desc>
    </ServiceDefinition>
</ServiceDefinitionList>

```

```

        <MarkupStyleText>Service_Type</MarkupStyleText>
    </Desc>
    <Desc>
        <DescText>01</DescText>
        <MarkupStyleText>BKM</MarkupStyleText>
    </Desc>
    <Desc>
        <DescText>BG</DescText>
        <MarkupStyleText>Group</MarkupStyleText>
    </Desc>
    <Name>ONE KILOGRAM BAGGAGE</Name>
    <OwnerCode>6X</OwnerCode>
    <RFIC>C</RFIC>
    <RFISC>0AA</RFISC>
    <ServiceCode>XBAG</ServiceCode>
    <ServiceDefinitionAssociation>
        <BaggageAllowanceRef>

<BaggageAllowanceRefID>CBA1</BaggageAllowanceRefID>
    </BaggageAllowanceRef>
    </ServiceDefinitionAssociation>
    <ServiceDefinitionID>SRV1</ServiceDefinitionID>
</ServiceDefinition>
<ServiceDefinition>
    <BookingInstructions>
        <MethodText>TWB\s?%WVAL%KG</MethodText>
        <OSI_Text>WVAL</OSI_Text>
        <OSI_Text>[0-9]{1,3}</OSI_Text>
        <SpecialService>
            <Qty>1</Qty>
        </SpecialService>
    </BookingInstructions>
    <Desc>
        <DescText>Chargeable</DescText>
    </Desc>
    <Desc>
        <DescText>F</DescText>
        <MarkupStyleText>Service_Type</MarkupStyleText>
    </Desc>
    <Desc>
        <DescText>01</DescText>
        <MarkupStyleText>BKM</MarkupStyleText>
    </Desc>
    <Desc>
        <DescText>BG</DescText>
        <MarkupStyleText>Group</MarkupStyleText>
    </Desc>
    <Name>ONE KILOGRAM BAGGAGE</Name>
    <OwnerCode>6X</OwnerCode>
    <RFIC>C</RFIC>
    <RFISC>0AA</RFISC>
    <ServiceCode>XBAG</ServiceCode>
    <ServiceDefinitionAssociation>

```

```

        <BaggageAllowanceRef>
<BaggageAllowanceRefID>CBA1</BaggageAllowanceRefID>
    </BaggageAllowanceRef>
    </ServiceDefinitionAssociation>
    <ServiceDefinitionID>SRV2</ServiceDefinitionID>
    </ServiceDefinition>
    </ServiceDefinitionList>
</DataLists>
</Response>
<PayloadAttributes>
    <CorrelationID>$3COEZA9XHH00VGM#TQSLYG#91</CorrelationID>
    <VersionNumber>21.3</VersionNumber>
</PayloadAttributes>
</IATA_ServiceListRS>

```

Table 36 Use Case 6 - ServiceListRS



# Reference

## List of Standard Services

Category	Service	Code	Expected Input
<b>Baggage</b>	Sport Equipment	SPEQ	Description
	Bulky Baggage in Hold Request	BULK	Specify number, weight and dimensions
	Bulky Cabin Baggage Request	CBBG	Specify number, weight, and size
	Request to Transport Fragile Baggage	FRAG	Specify number, weight, and dimension
	Excess Baggage Request	XBAG	Specify number, weight and dimension
	Weapon	WEAP	Description
<b>Meals</b>	Vegetarian Hindu	AVML	-
	Baby food	BBML	-
	Bland meal	BLML	-
	Child meal	CHML	-
	Diabetic	DBML	-
	Fruit platter	FPML	-
	Gluten-free	GFML	-
	Hindu (non vegetarian)	HNML	-
	Kosher	KSML	-
	Low calorie	LCML	-
	Low fat, low cholesterol	LFML	-
	Low sodium	LSML	-
	Moslem	MOML	-
	Non-lactose	NLML	-
	Raw vegetarian	RVML	-
Raw vegetarian	RVML	-	

Category	Service	Code	Expected Input
	Seafood	SFML	-
	Special meal, specify food	SPML	Specify food items
	Vegetarian (non-dairy)	VGML	-
	Vegetarian jain meal	VJML	-
	Vegetarian (lacto-ovo)	VLML	-
	Vegetarian oriental meal	VOML	-
	High Fibre Meal	HFML	-
	Low Protein Meal Request	LPML	-
<b>Pets</b>	Pets in Cabin	PETC	Specify number, type and pedigree, and container weight and dimension
<b>Passenger Assistance/Wheelchair</b>	Wheelchair on Board	WCOB	-
	Wheelchair Aircraft Departure Hall	WCHR	-
	Wheelchair Up/Down Stairs	WCHS	-
	Wheelchair Seat	WCHC	-
	Dry Cell Battery Wheelchair	WCBD	-
	Wet Cell Battery Wheelchair	WCBW	-
	Manual Power Wheelchair	WCMP	-
	Meet and Assist	MAAS	Specify details such as elderly person, handicapped passenger, or pregnant lady
	Language	LANG	Languages spoken
	Blind Passenger Information	BLND	Specify whether or not accompanied by guide dog

Category	Service	Code	Expected Input
	Deaf Passenger Information	DEAF	Specify if accompanied by a guide dog
	Emergency Contact	PCTC	Description
	Seaman - ship's crew	SEMN	Description
	Deportee Accompanied	DEPA	Description
	Deportee Unaccompanied	DEPU	Description
	Disabled Passenger Needing Assistance	DPNA	Description
	Unaccompanied Minor	UMNR	Specify age
	Medical Assistance Information	MEDA	Description
	Stretcher Request	STCR	Description
	Request for Extra Seat	EXST	Description
<b>Other</b>	Group Seat Request	GPST	Specify number and preferred location
	Group Fare Information	GRPF	Specify fare code
	Passengers traveling together using a common identity	GRPS	-
	Custom SSR	Custom	Description and Custom SSR
	Other information	OTHS	Description

# Glossary

- AAAS: Amadeus Airline Ancillary Services

## Legal disclaimer

This document, including all information contained herein and any attached or related documents, is strictly confidential and proprietary information of Amadeus and its respective affiliates, subsidiaries, members, vendors and/or suppliers (the “Confidential Information”) and is being shared with you for the sole and exclusive purpose of providing a functional solution overview between the airline and NDC consumer as part of Amadeus Altéa NDC. This document is intended solely for information purposes. If you are not the intended recipient you are notified that disclosing, copying or distributing the contents of this document or information is strictly prohibited. Any Amadeus intellectual property or other information contained in this document or relating to the solutions, any products or services described herein shall remain the sole and exclusive property of Amadeus or its licensees, as applicable. Nothing herein shall constitute a license, transfer or other grant of any rights in or to the information or intellectual property contained or referenced herein. Any solutions, products, services or company names that may be referred to in this presentation that are trademarks are herewith acknowledged. Any disputes in connection with the breach of the above provisions shall be governed by and construed in accordance with English law and is submitted to the exclusive jurisdiction of the courts of London. Any content within this document is subject to an agreement being entered into between the parties and will not be considered as binding until agreed and formalised by the parties under a definitive agreement.